



Simone Wien

Leslie Petter ARCS Light Award
Ph.D. Student, Epidemiology
Third Year ARCS Scholar

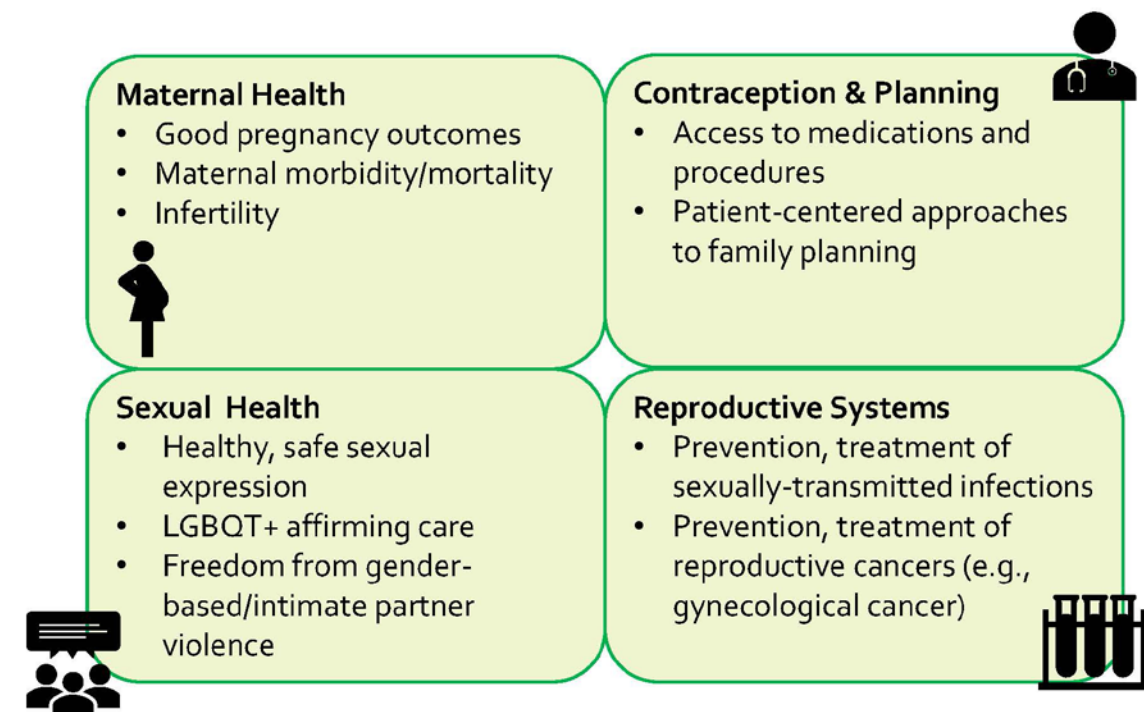


EMORY UNIVERSITY

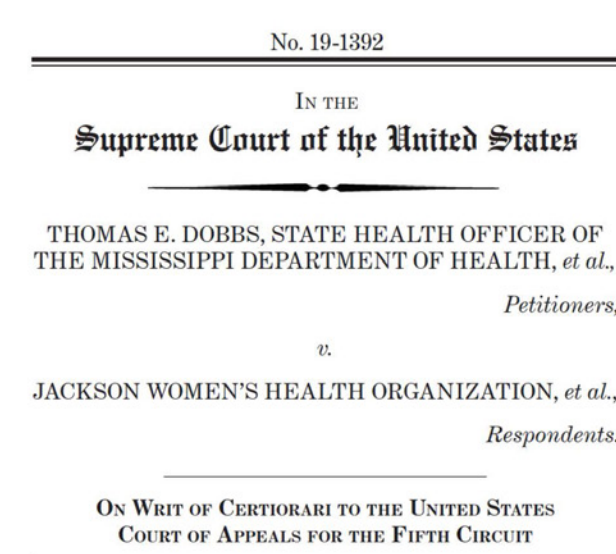
Evaluating policies in reproductive health: methodological challenges and strategies to address them

The goal of this dissertation is to demonstrate how select challenges can impede valid inference in reproductive policy evaluation and to provide strategies to address these challenges.

Reproductive health is a fraught and frequently targeted domain for policy in the United States with consequences for population health



Epidemiologic studies estimating the impact of policies shaping reproductive health are high-profile and can influence policy



However, epidemiologic studies at the nexus of reproductive health and policy evaluation face methodological challenges

These challenges frequently stem from:

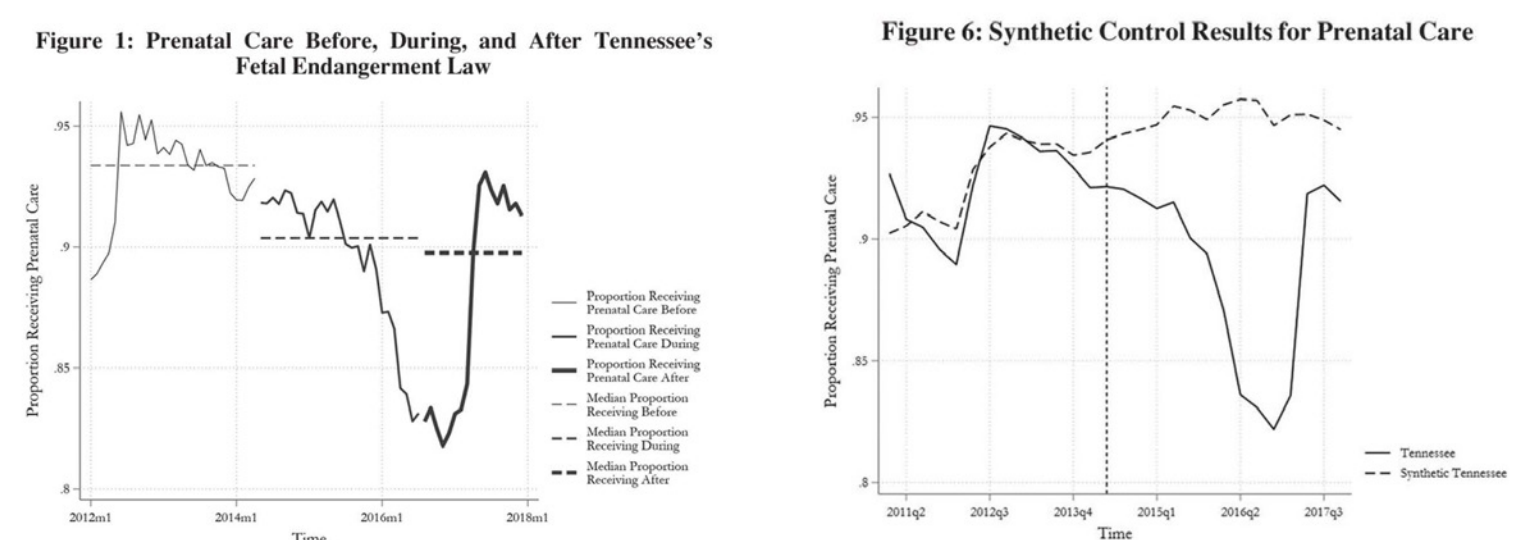
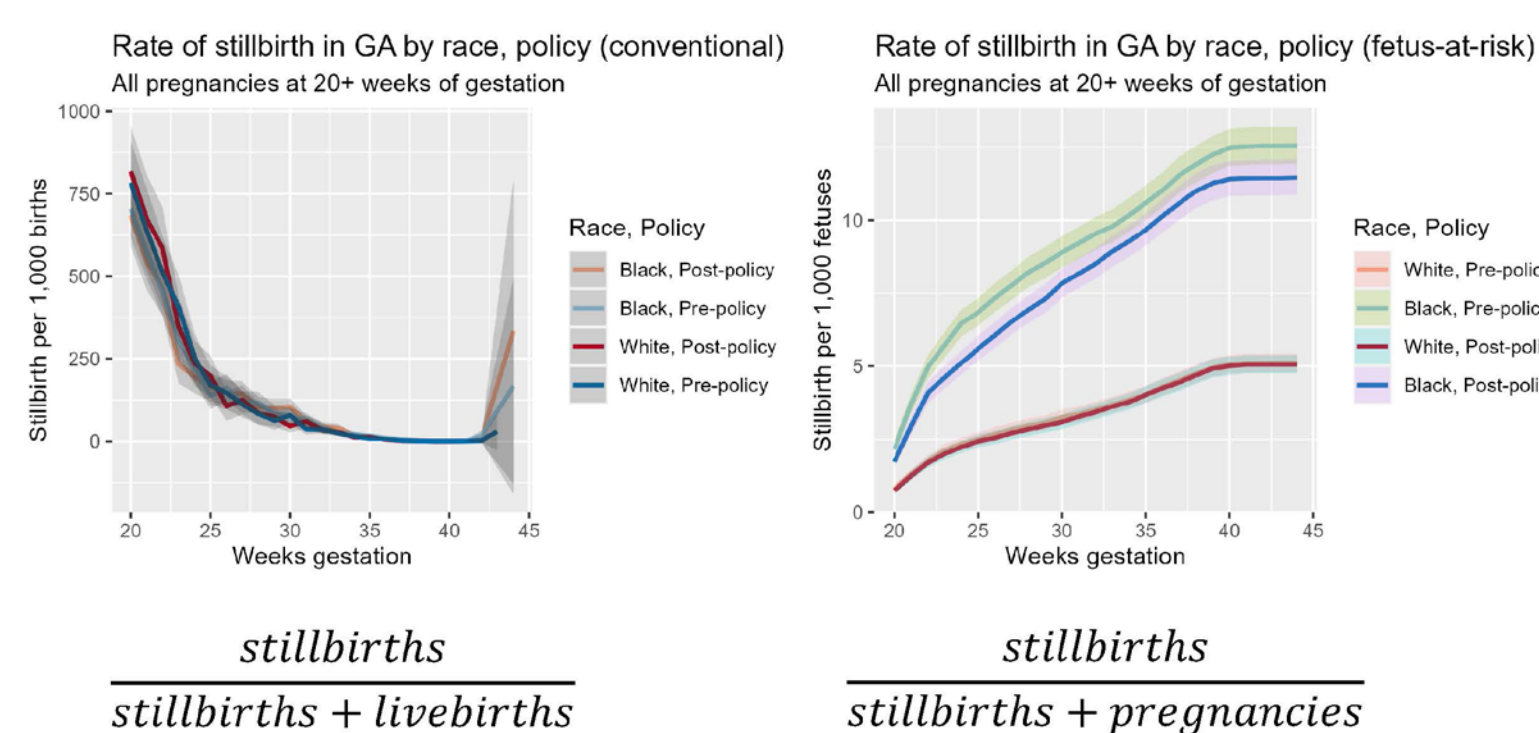
The complex nature of pregnancy when analyzing birth outcomes

Assuming policies are implemented the same across states or counties

The goal of this dissertation is to:

1. Demonstrate how select challenges can impede valid inference in reproductive policy evaluation, and
2. Provide strategies to address these challenges

Case studies will be used to both highlight a methodological challenge and provide case study-specific solutions



Boone & McMichael (2023)

