



Tawfik Hussein

Boice/Reid Award
Ph.D. Student, Biomedical Engineering
Third Year ARCS Scholar

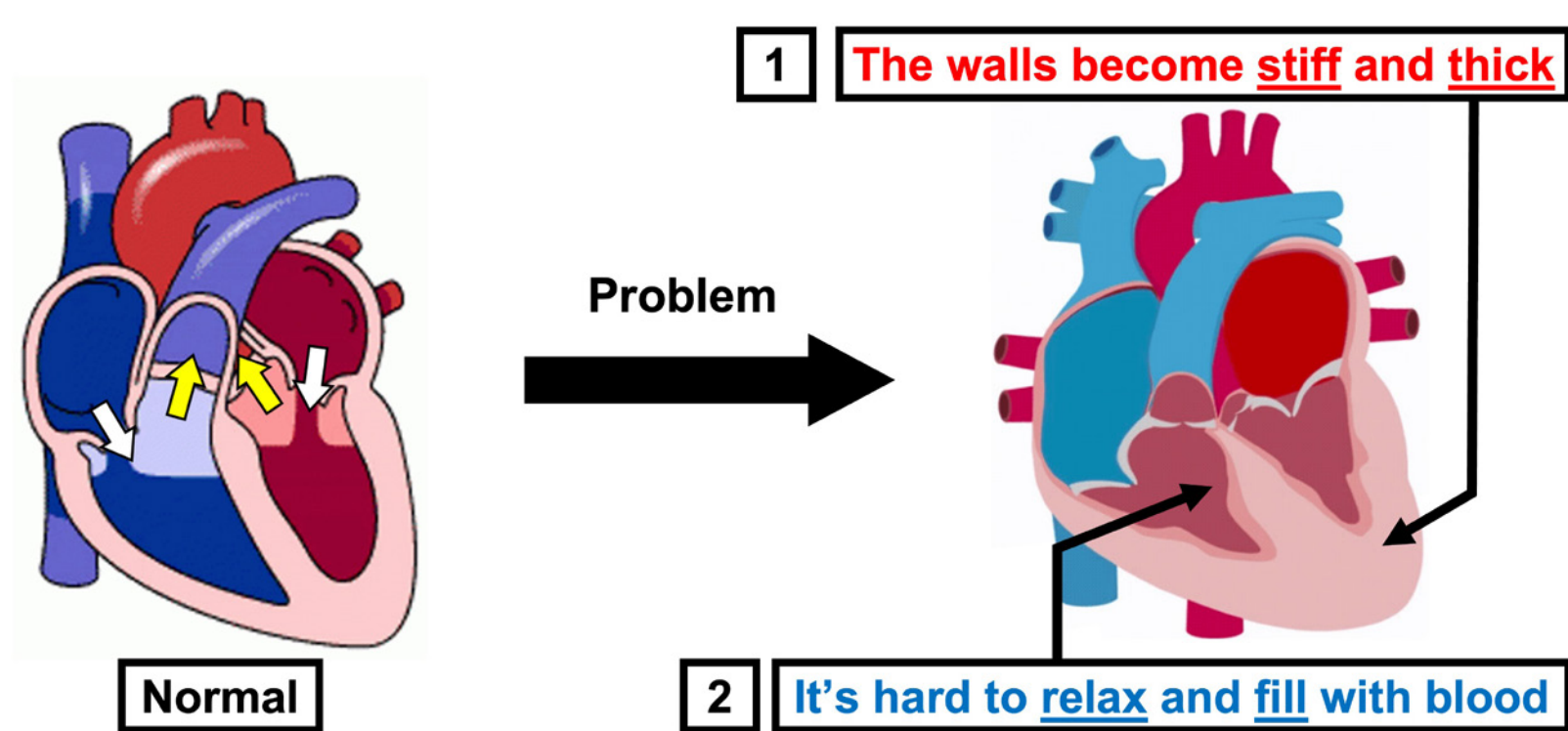
Georgia Tech



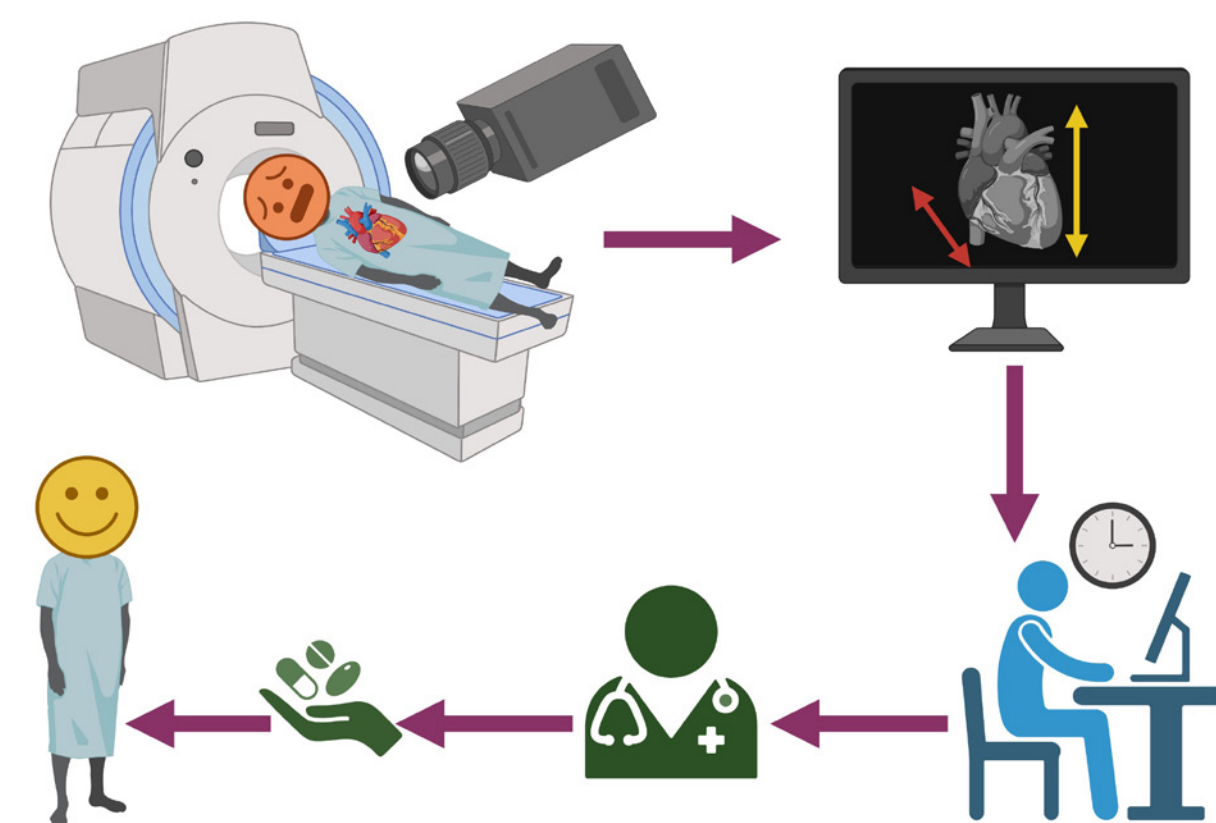
A Multiscale Computational Model of the Heart for Patient-specific Diagnosis of Heart Failure with Preserved Ejection Fraction (HFpEF)

A new way to measure myocardial stiffness non-invasively in HFpEF patients to reveal new insights into how HFpEF changes the heart and predict its outcomes.

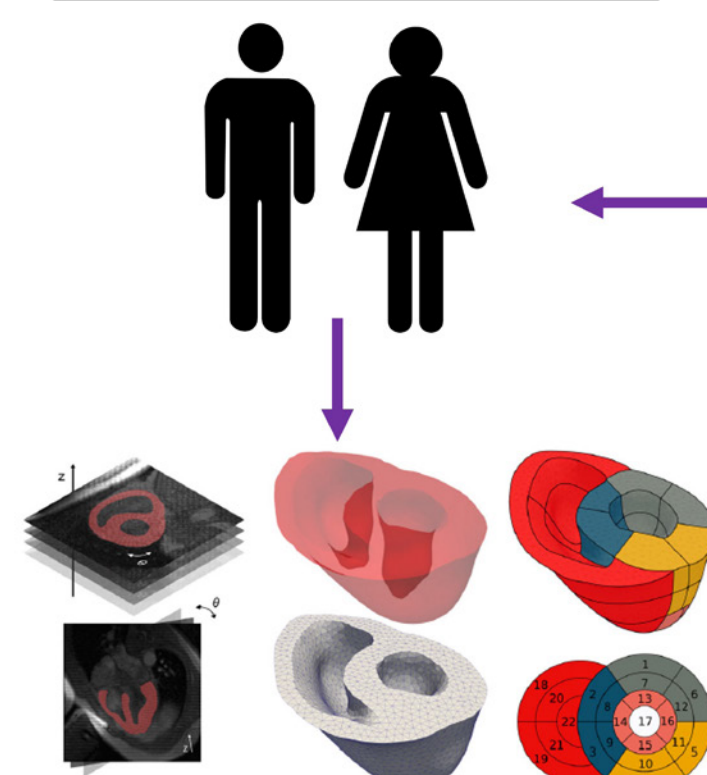
What is the clinical problem?



What is the big picture and ultimate goal?

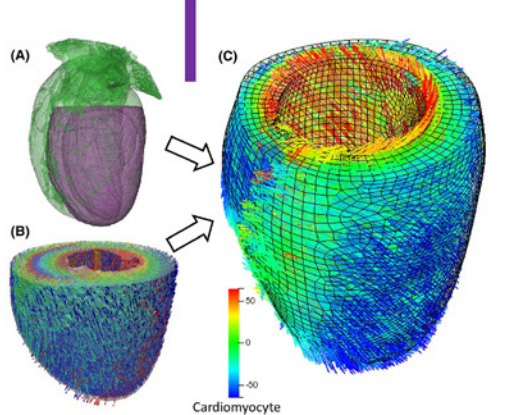
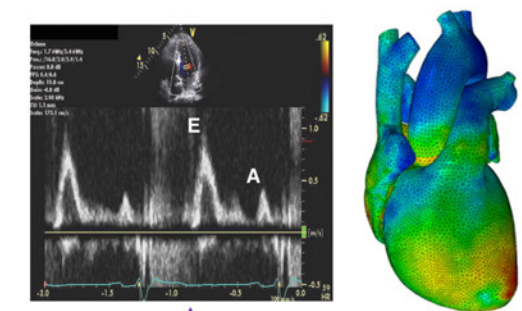


Recruit HFpEF Patients



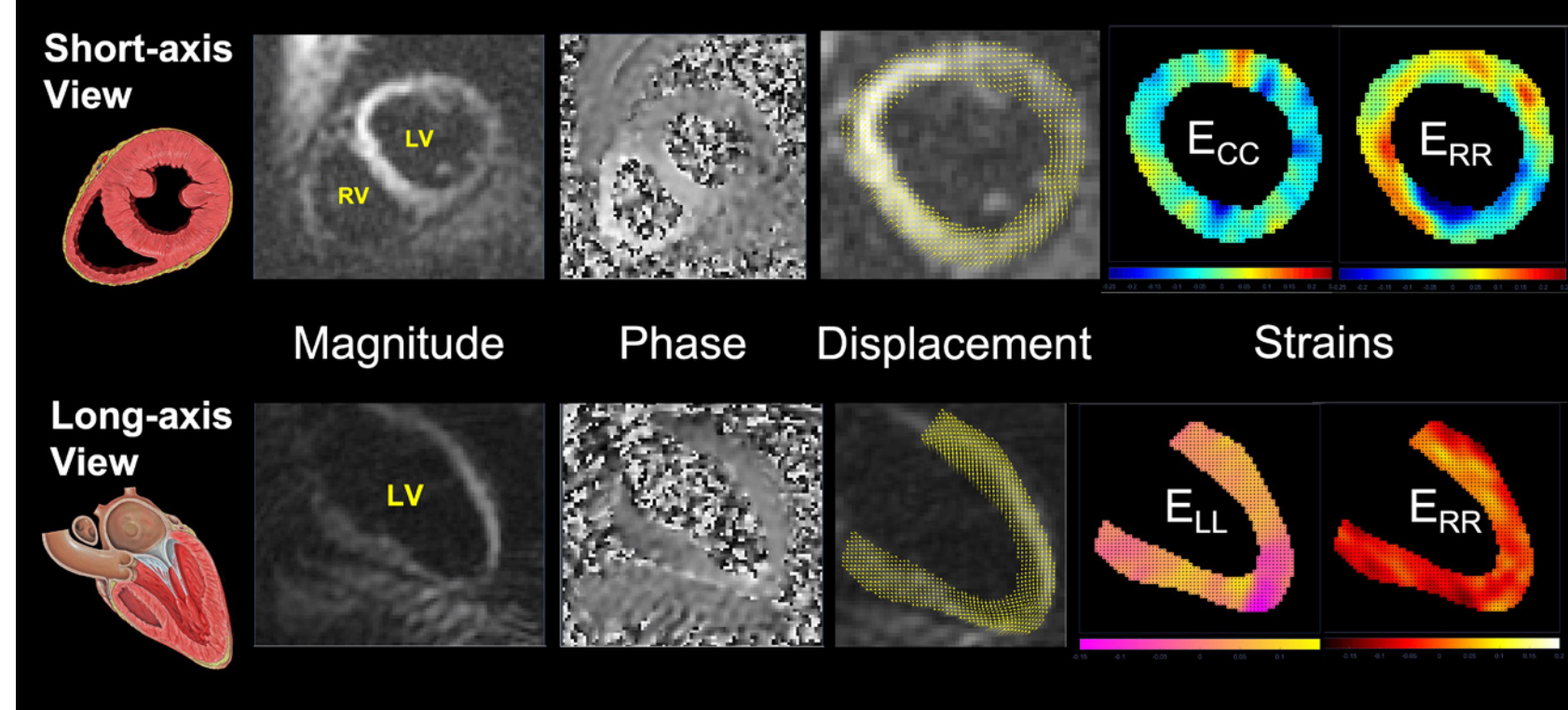
Aim 1: 3D Motion

Aim 3: Compare with Echo

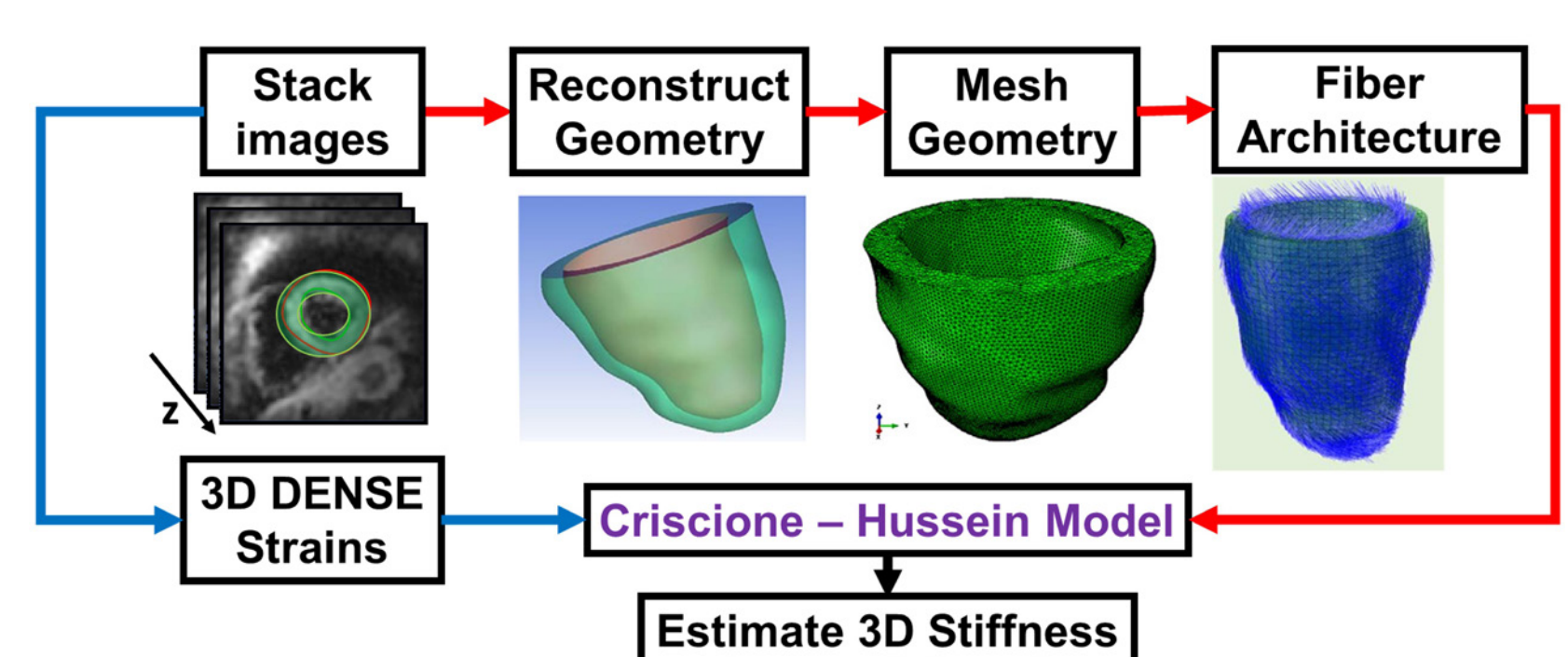
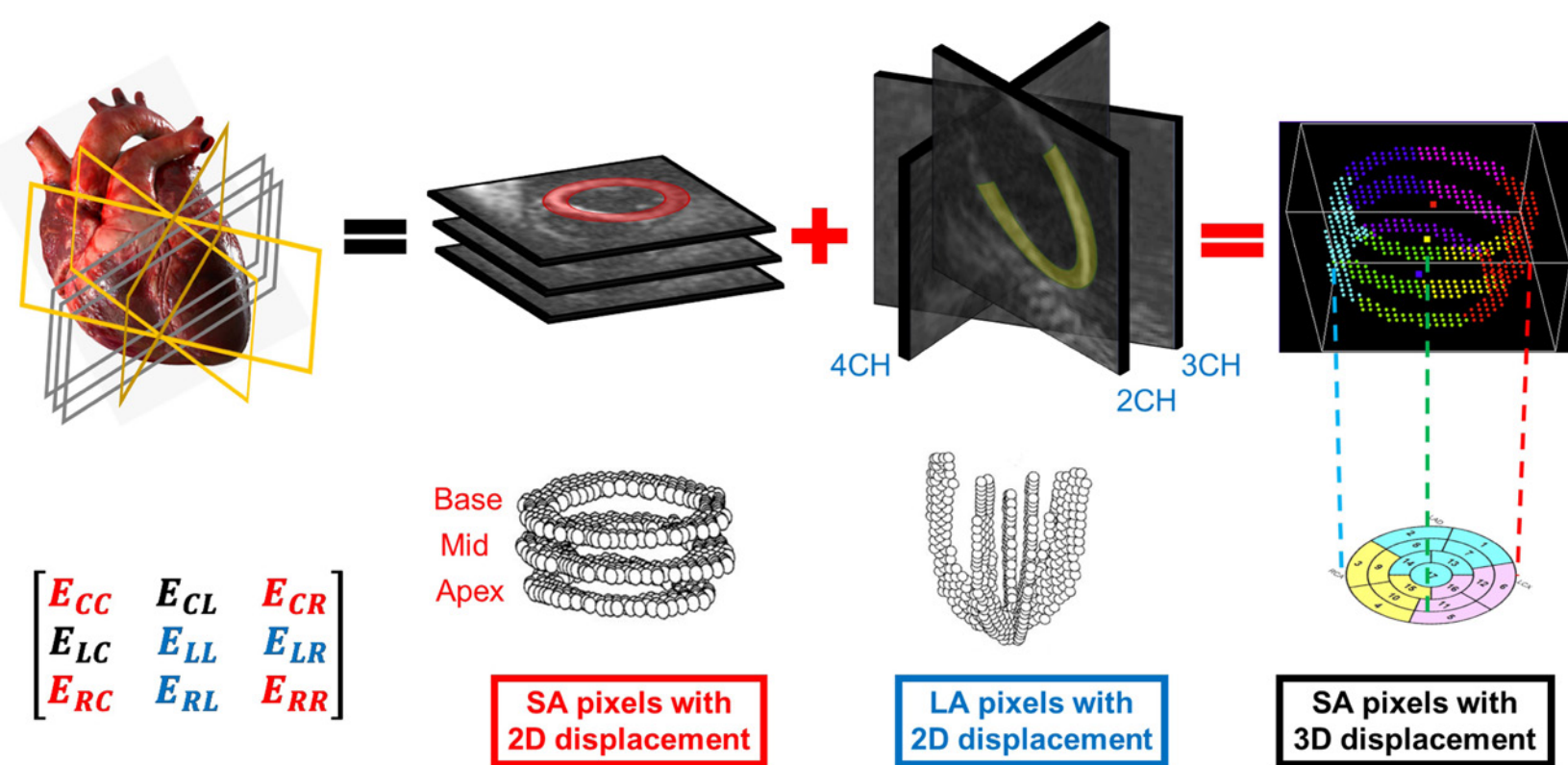


Aim 2: Compute 3D Stiffness

How does the 2D motion of the heart look like?



How do we get 3D motion from 2D images?



How do we get the heart's stiffness?

