



Simone Wien

Ph.D. Student, Epidemiology
Second Year ARCS Scholar
Petter Award



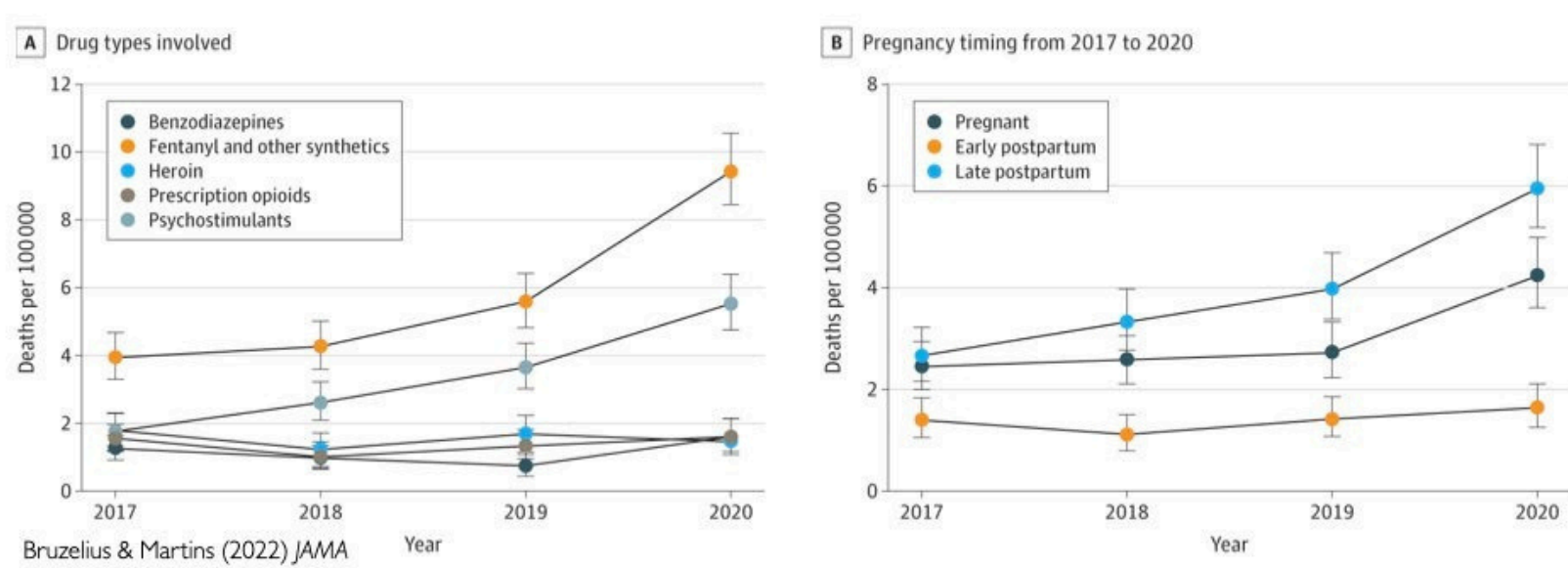
EMORY UNIVERSITY

Assessing policy changes on opioid overdose among pregnant and postpartum people in the United States

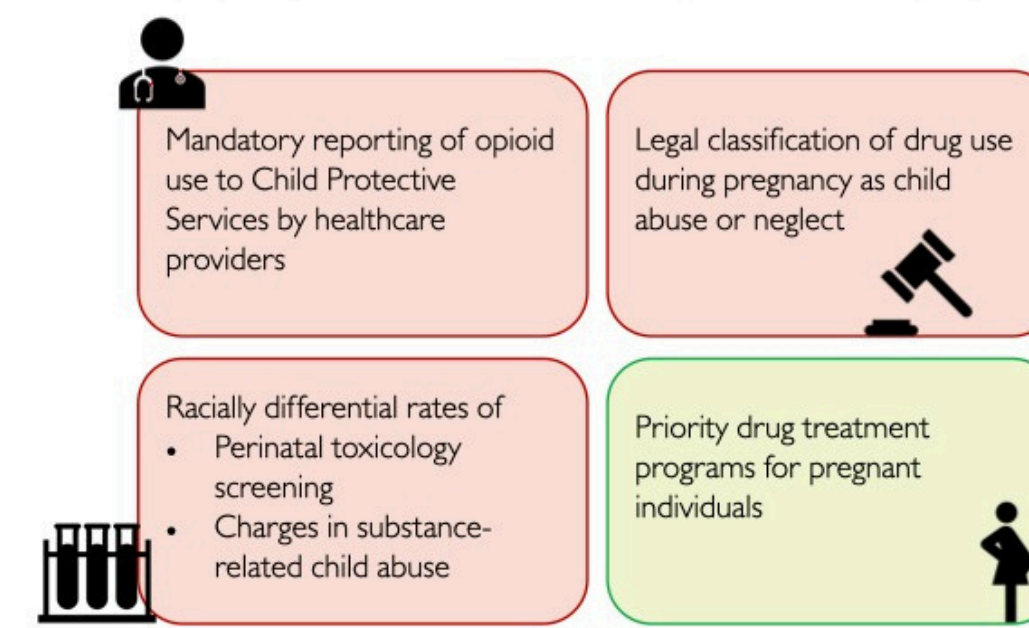
Pregnant and postpartum individuals who use drugs are at the nexus of two public health crises: maternal mortality and opioid overdoses. This research aims to quantitatively assess the impact of federal and state-level policies on opioid overdose amid a complex health environment.

Pregnant and postpartum individuals who use drugs are at the intersection of US maternal mortality and opioid overdose crises

Steady increases in pregnancy-related overdoses have been observed since 2007; from 2017-2020 mortality increased by 81%



The complex clinical and legal environment that pregnant individuals who use drugs must navigate contributes to overdose risk

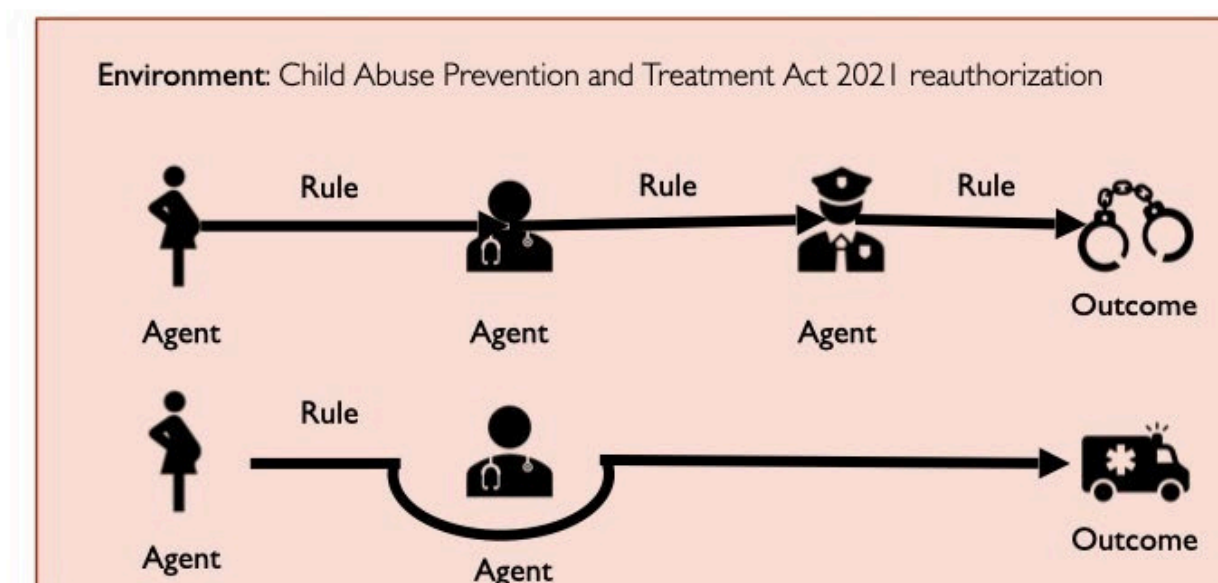


This environment makes it difficult to evaluate a given policy's impact.

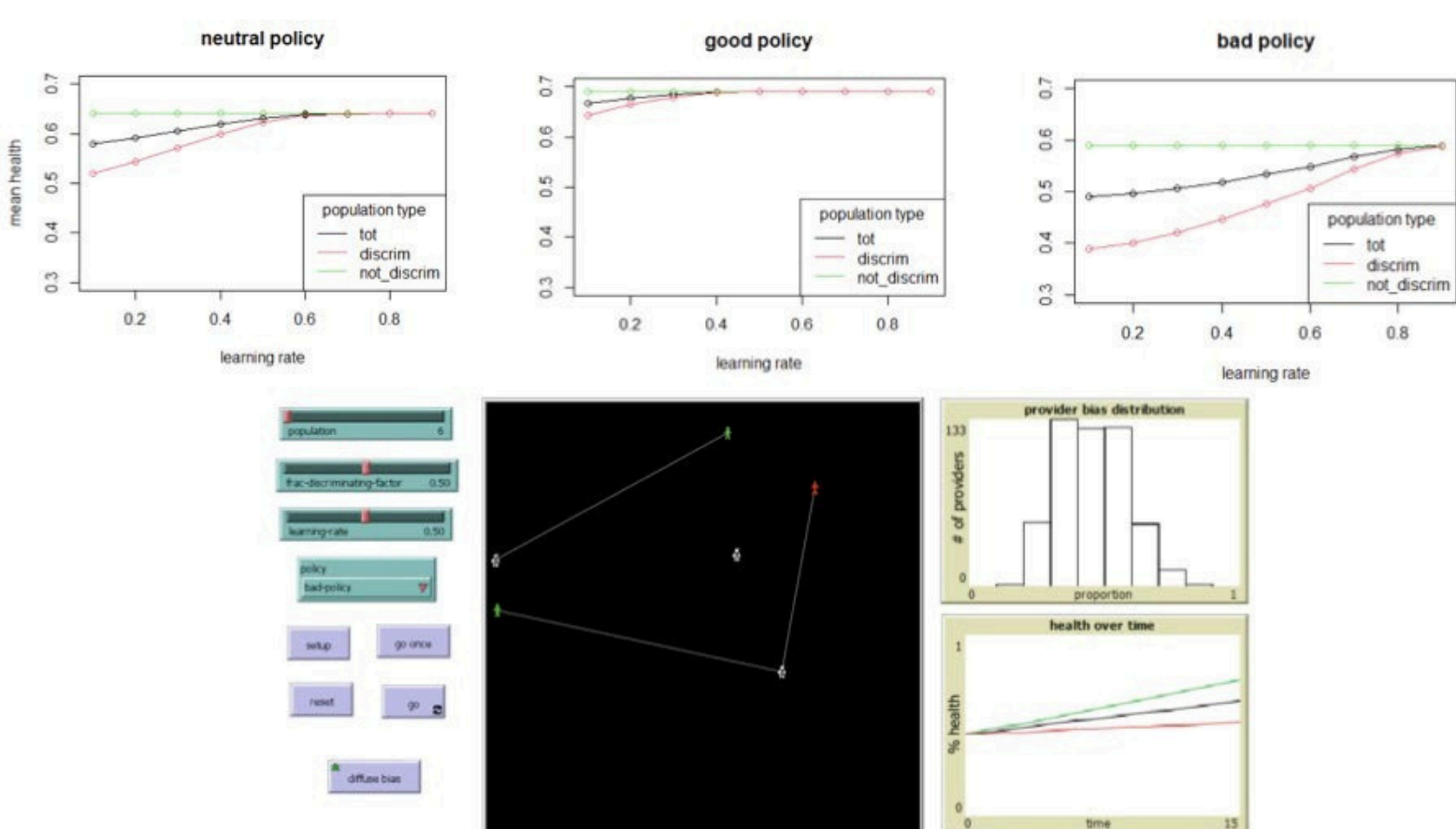
The overall goal of my research is to assess how policies shape opioid overdose among pregnant and postpartum people who use opioids using different quantitative methods

- Question 1:** what methods are best when we have empirical data, such as electronic health records?
- Question 2:** what methods are best in the absence of empirical data when evaluating rapid policy change or estimating the effects of implementation?

Agent-based models have been highlighted as a potential approach to evaluate complex scenarios by simulating agents, the environment in which they exist, and the actions (rules) agents have with each other and the environment

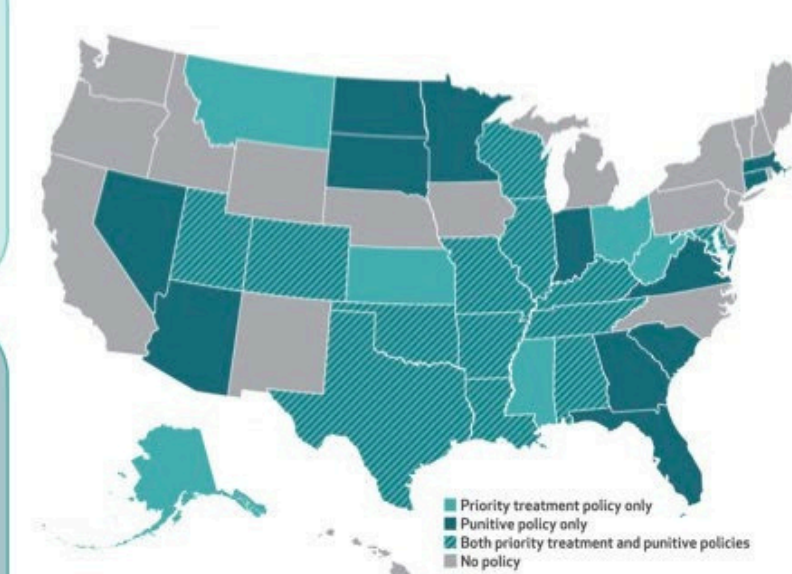


Roberts (1998)



Next steps include identifying policy scenarios and state(s) to evaluate

- Targeted drug treatment programs for pregnant individuals
- Pregnant individuals given priority access to general programs
- Anti-discrimination pregnancy laws for publicly funded programs
- Substance use classified as child abuse/neglect
- Civil commitment
- State-required reporting or testing



Maclean et al. (2022) Health Affairs

Many thanks to Dr. Michael Kramer's GPS Health Lab and the TADA Fellowship Training Program for all of their support. This research was funded in part by NIDA grant 5T32DA050552. The results and opinions expressed therein do not necessarily reflect those of NIH or NIDA.

Scholar Awards Celebration
November 15, 2023



Igniting Innovation in Georgia