



# Imhotep Truitt

Wright Award  
Biology Major  
First Year ARCS Scholar



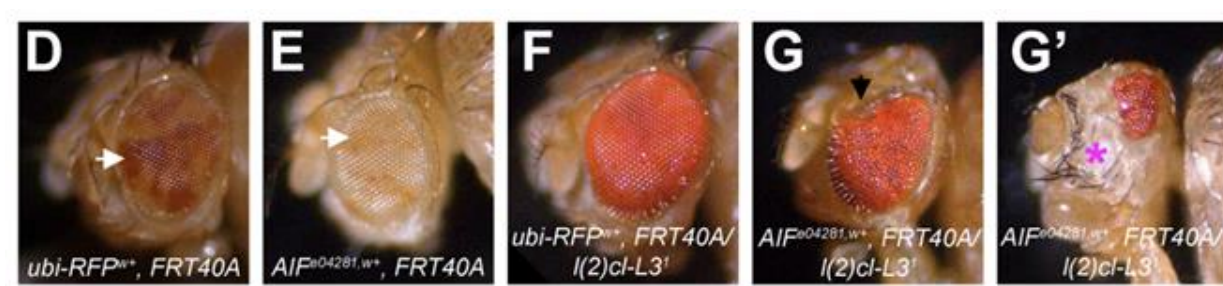
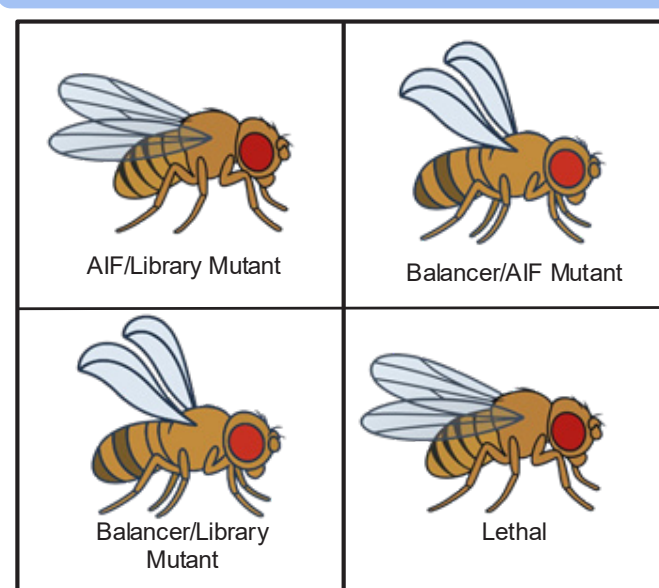
# MOREHOUSE

COLLEGE

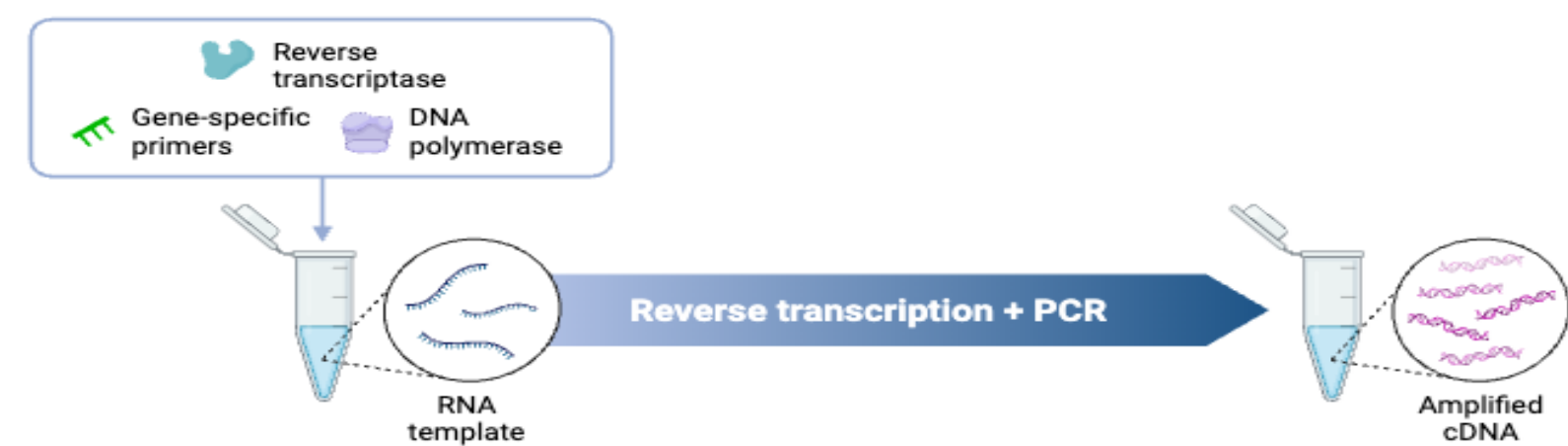
## Disrupted AIF Allele in *Drosophila* Validated as Model for Apoptosis and Cancer Research

This research identified and confirmed a transposon insertion in the *AIFe<sup>04281</sup>* allele of *Drosophila melanogaster*, which truncates the protein and disrupts apoptosis. The mutant line provides a valuable model for future mutagenesis and cancer screening studies.

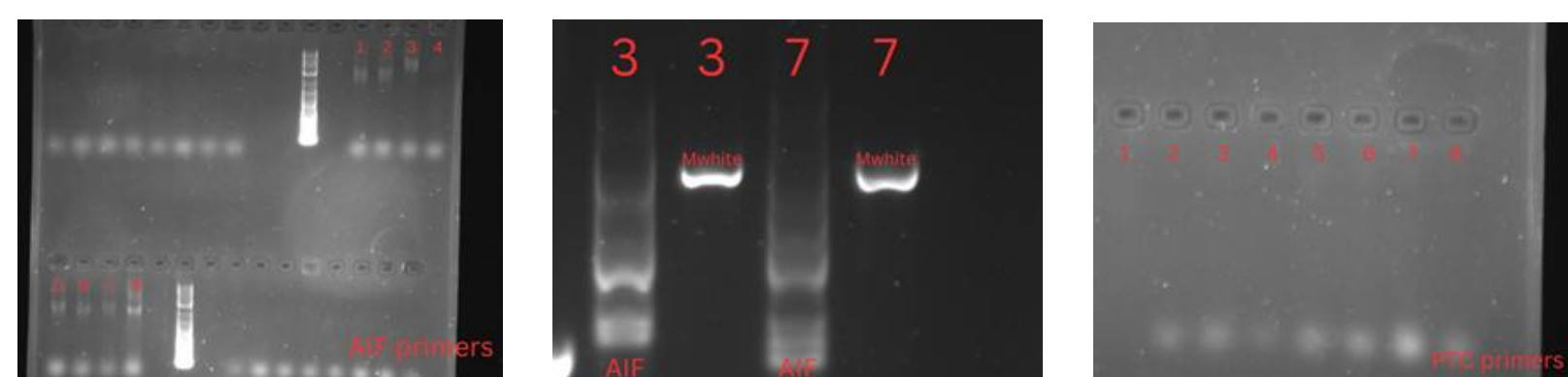
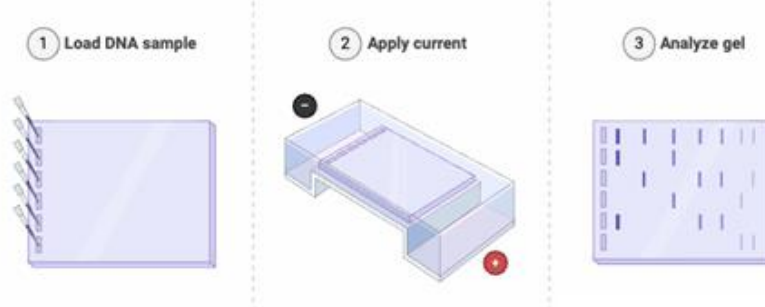
### Analysis of *Drosophila* Stock



### Primer Design for PCR



### Gel Electrophoresis



### Transposon Identified

