



Natalie Gonzalez

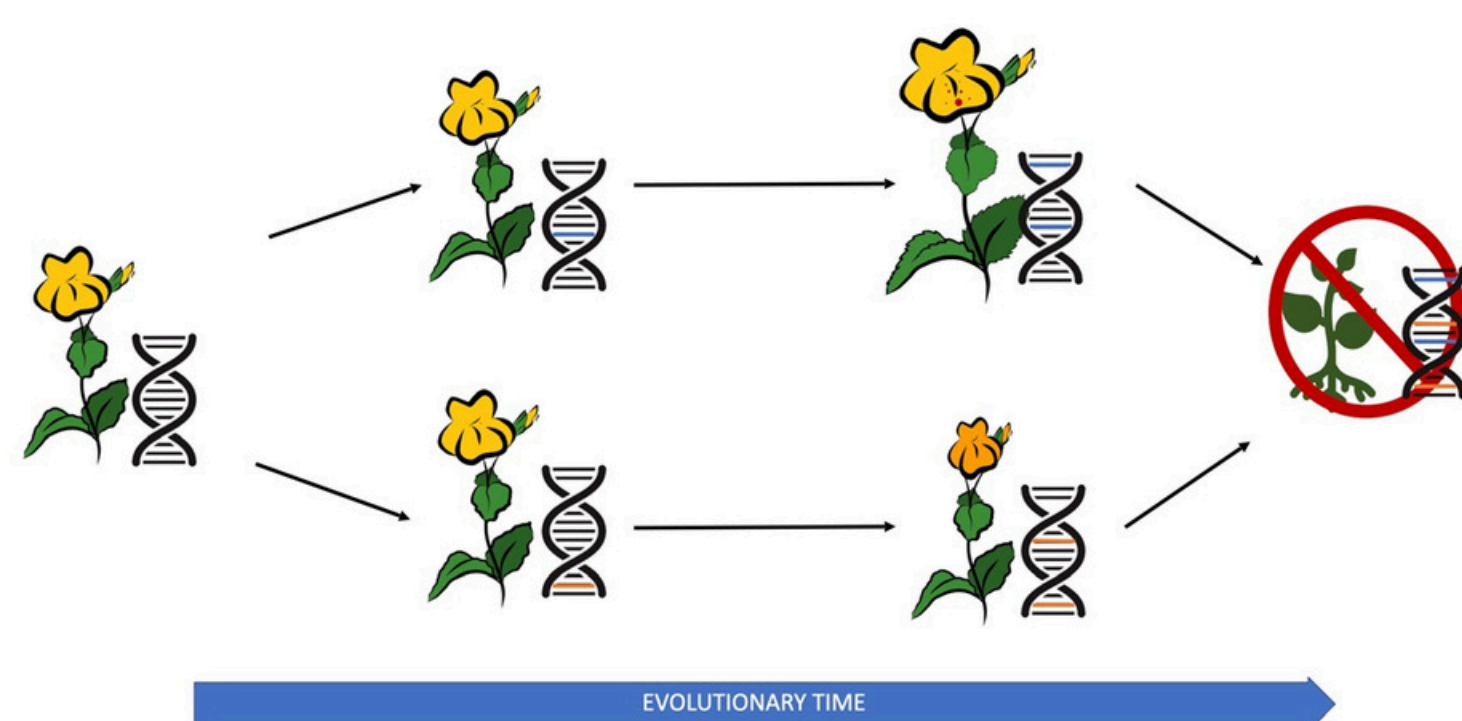
Ph.D. Student, Genetics First Year ARCS
Scholar Leake/Parsons/ARCS Award



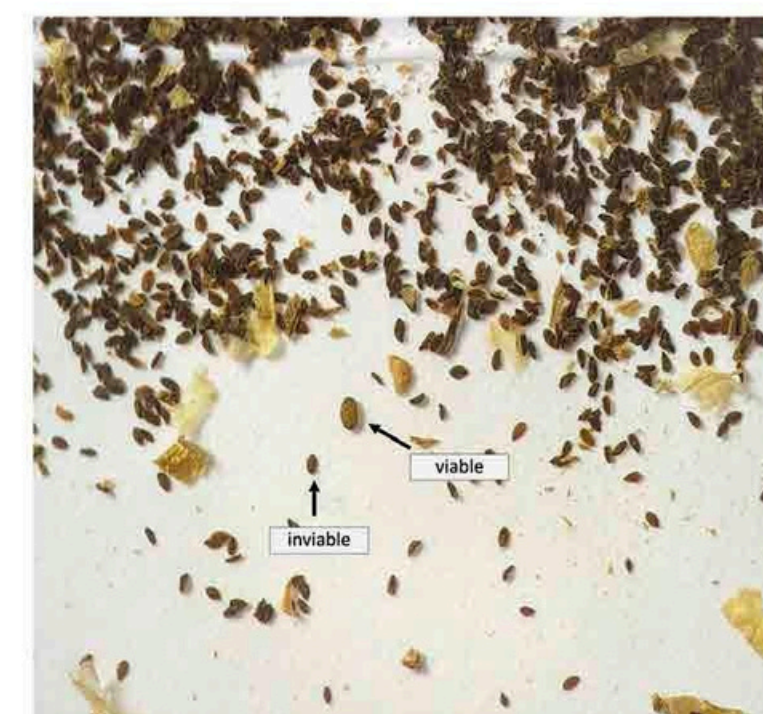
UNIVERSITY OF
GEORGIA

Classic speciation theory posits that once closely related taxa may become reproductively isolated if they independently accumulate genetic changes that are incompatible in their hybrid offspring.

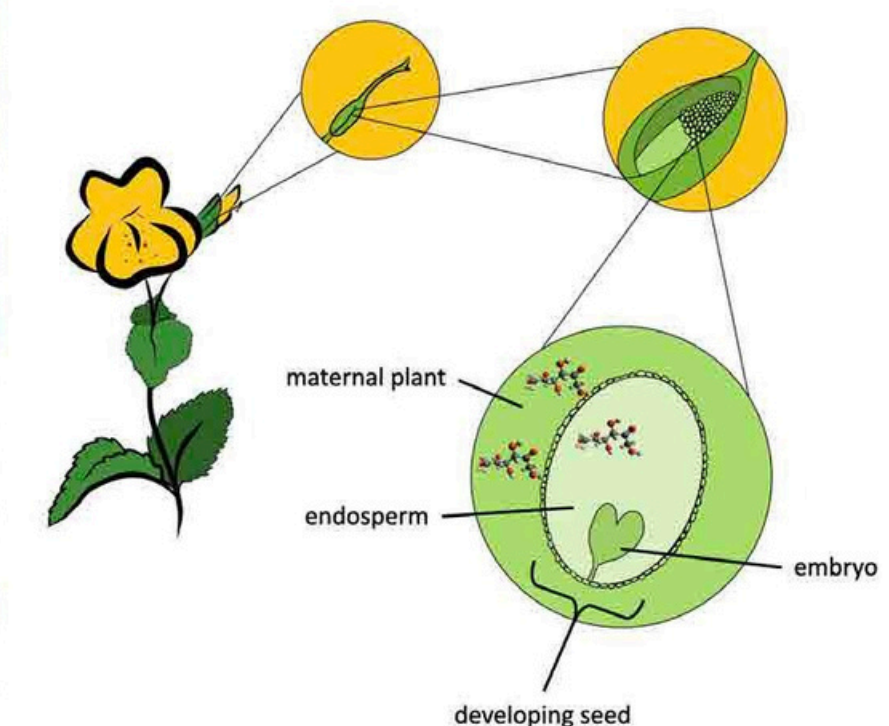
Speciation via Bateson-Dobzhansky-Muller Incompatibilities



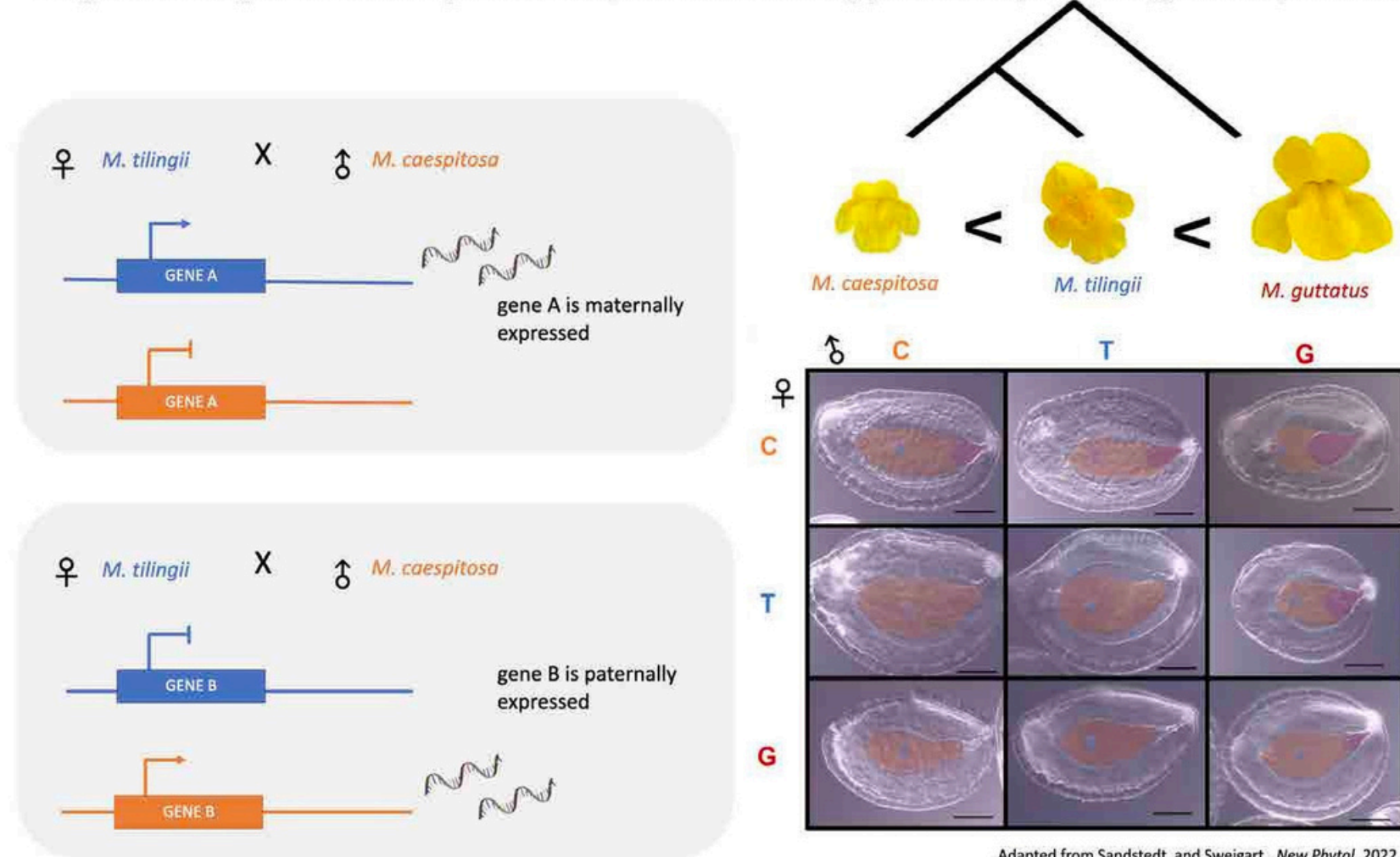
Hybrid Seed Lethality in crosses of Yellow Monkey Flower species



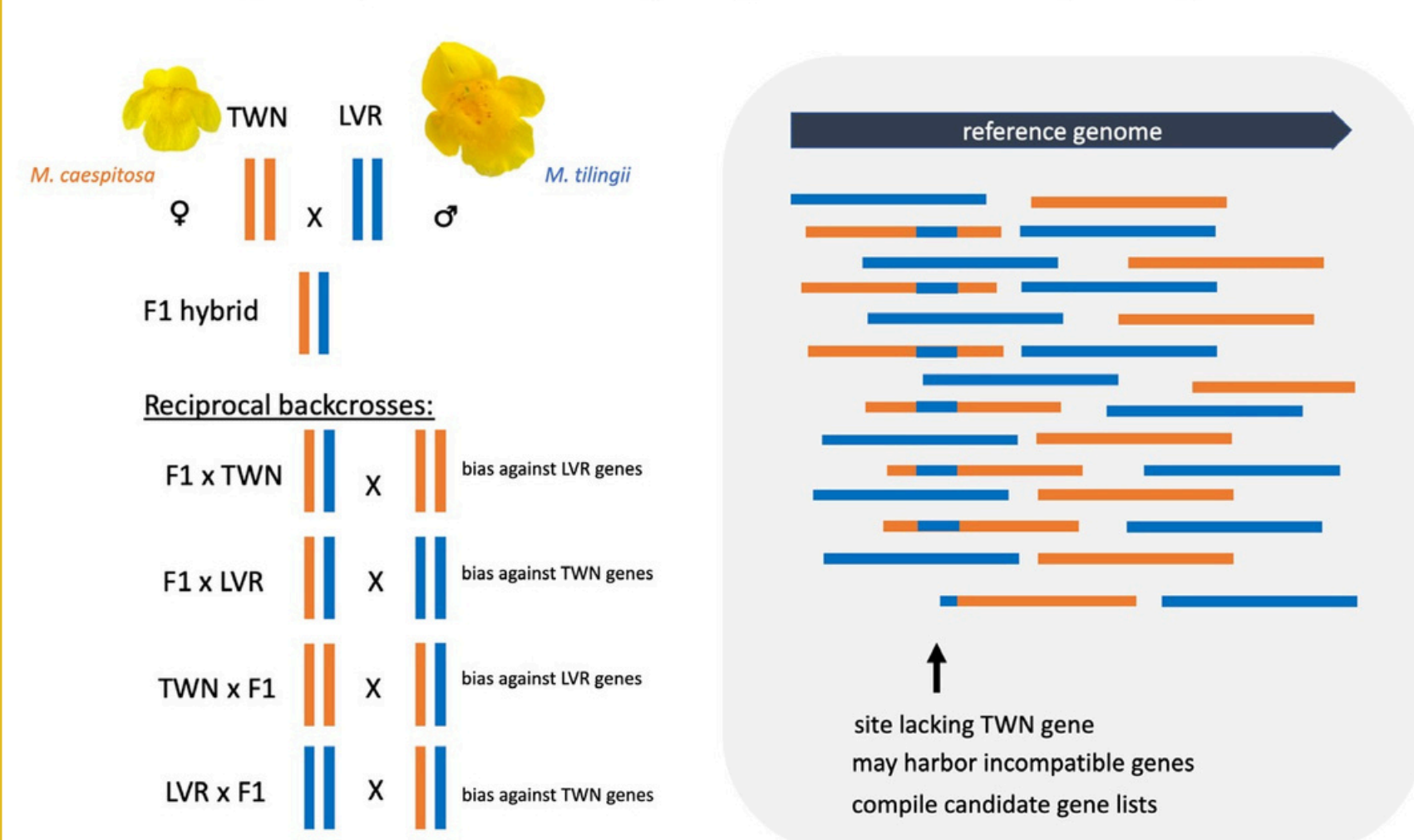
Invisible seeds:
flat, dark, wrinkled
up to 99% of seeds are
invisible



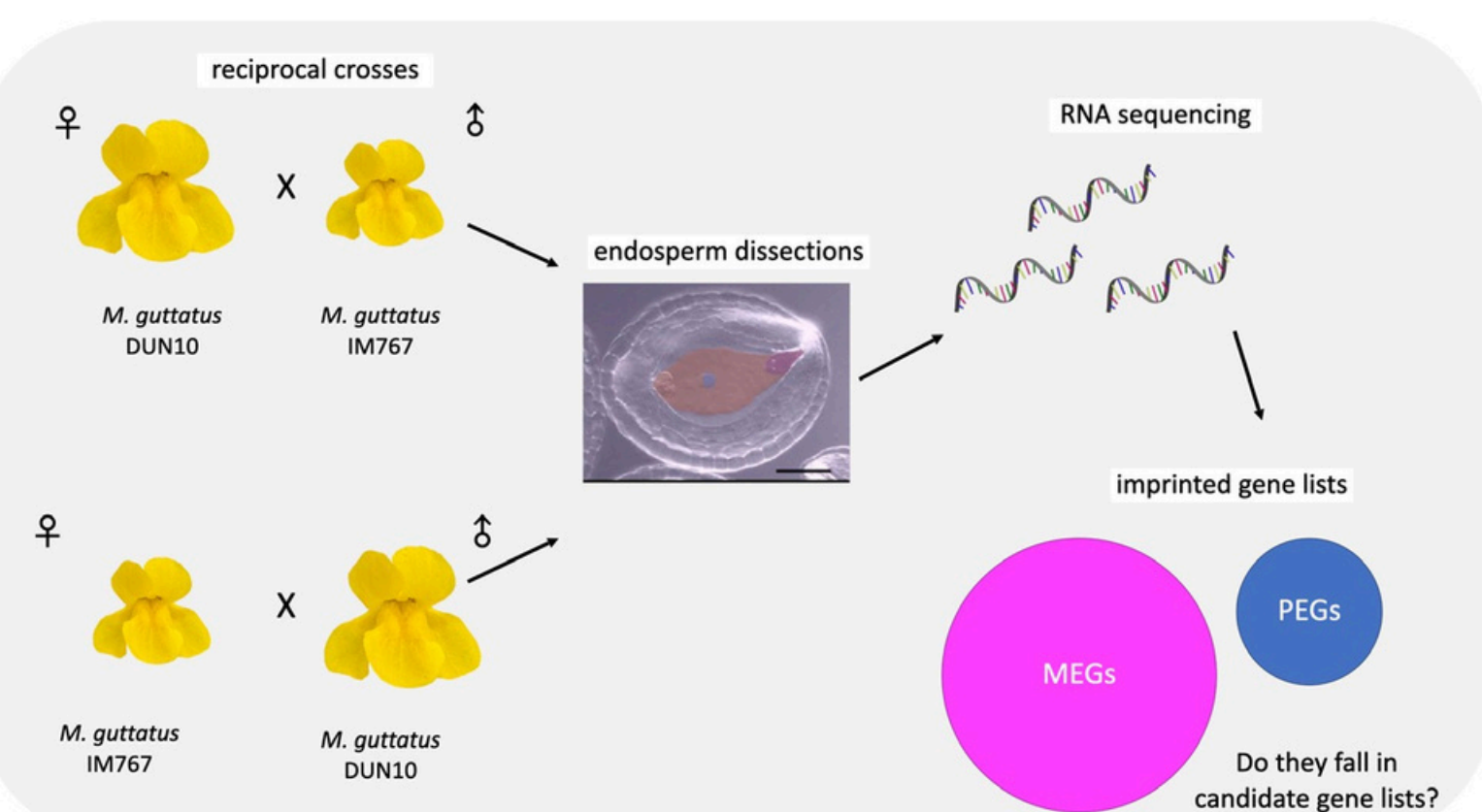
Proper endosperm development may be dictated by parentally biased gene expression



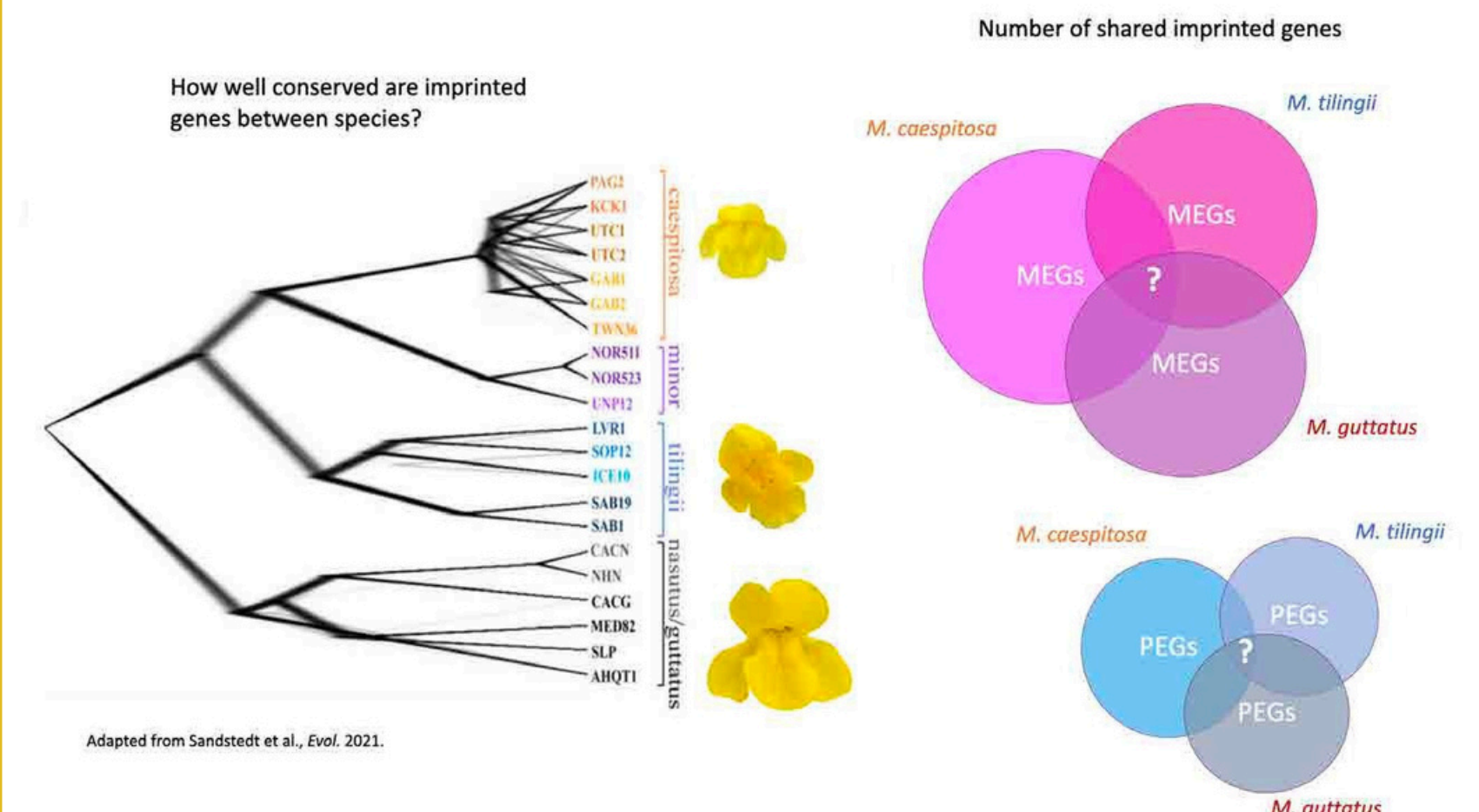
Using a reciprocal backcrossing design to discover incompatible genes



Are imprinted genes a source of genetic incompatibilities?



Unveiling evolutionary patterns of Hybrid Seed Lethality



Research performed in the lab of Dr. Andrea Sweigart and is supported the NIH (5T32GM142623), NSF (DEB-1856180), UGA Department of Genetics.

Scholar Awards Celebration
November 15, 2023



Igniting
Innovation
in Georgia