



## Nathan Zavanelli

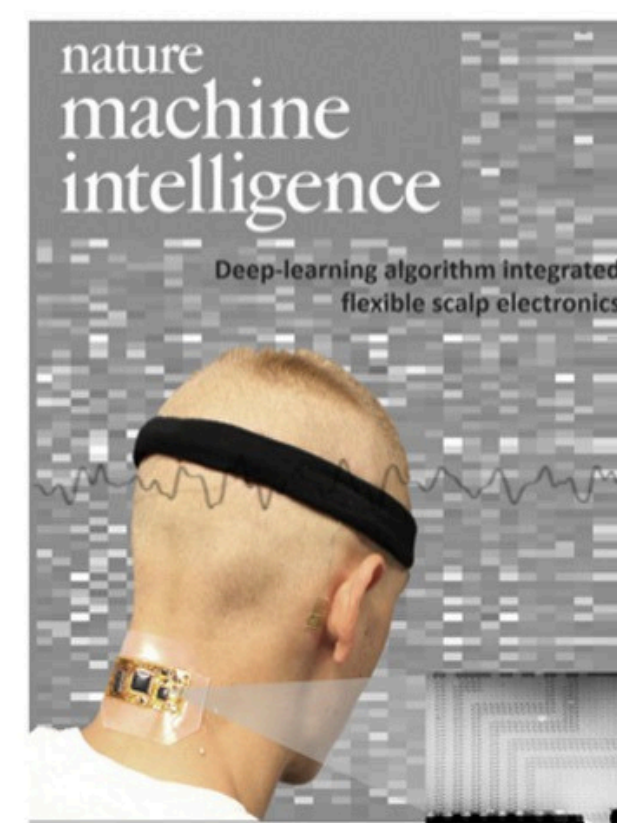
Ph.D. Student, Bioengineering in  
Mechanical Engineering Second Year  
ARCS Scholar Carnovale Award



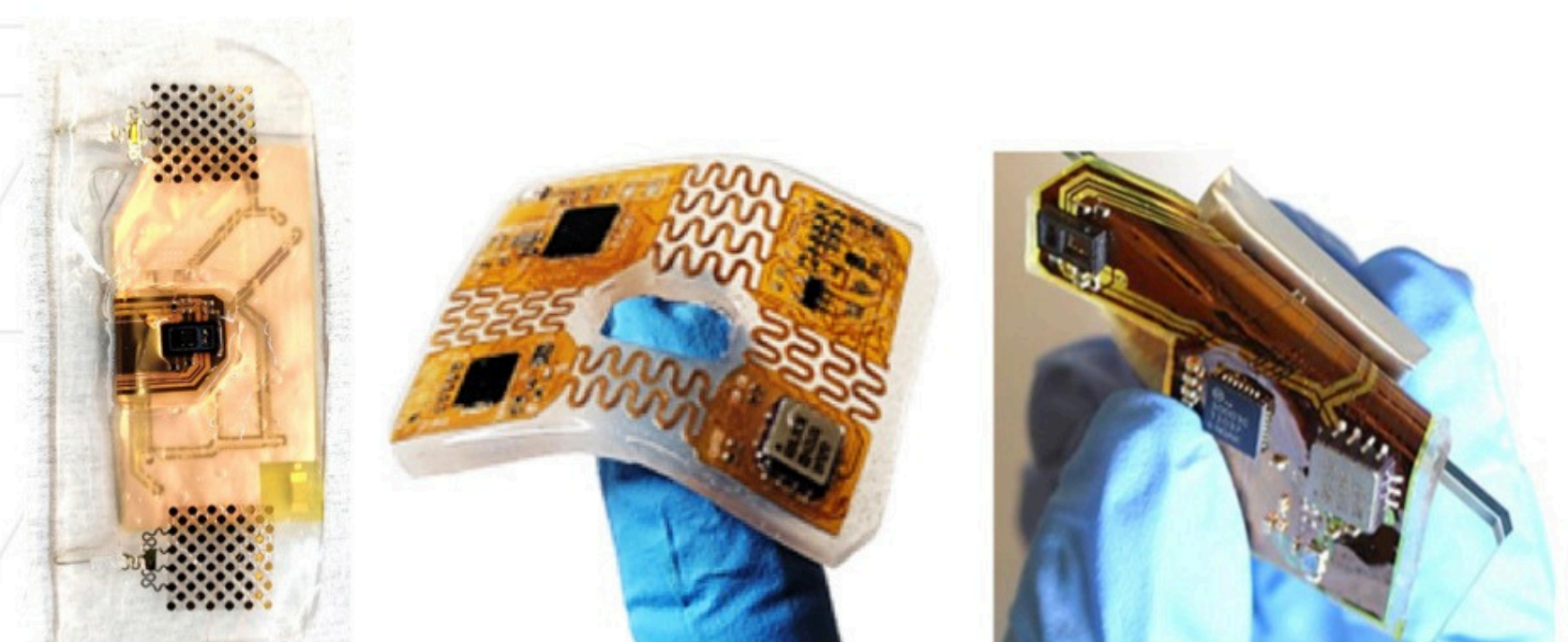
# Skin-like electronics and sensors for wearable healthcare

The mechanical mismatch between traditional rigid electronics and soft biological tissues severely limits existing wearable technologies. In contrast, soft, miniaturized, and stretchable systems can seamlessly integrate with the human skin and create a reliable, continuous human-computer interface.

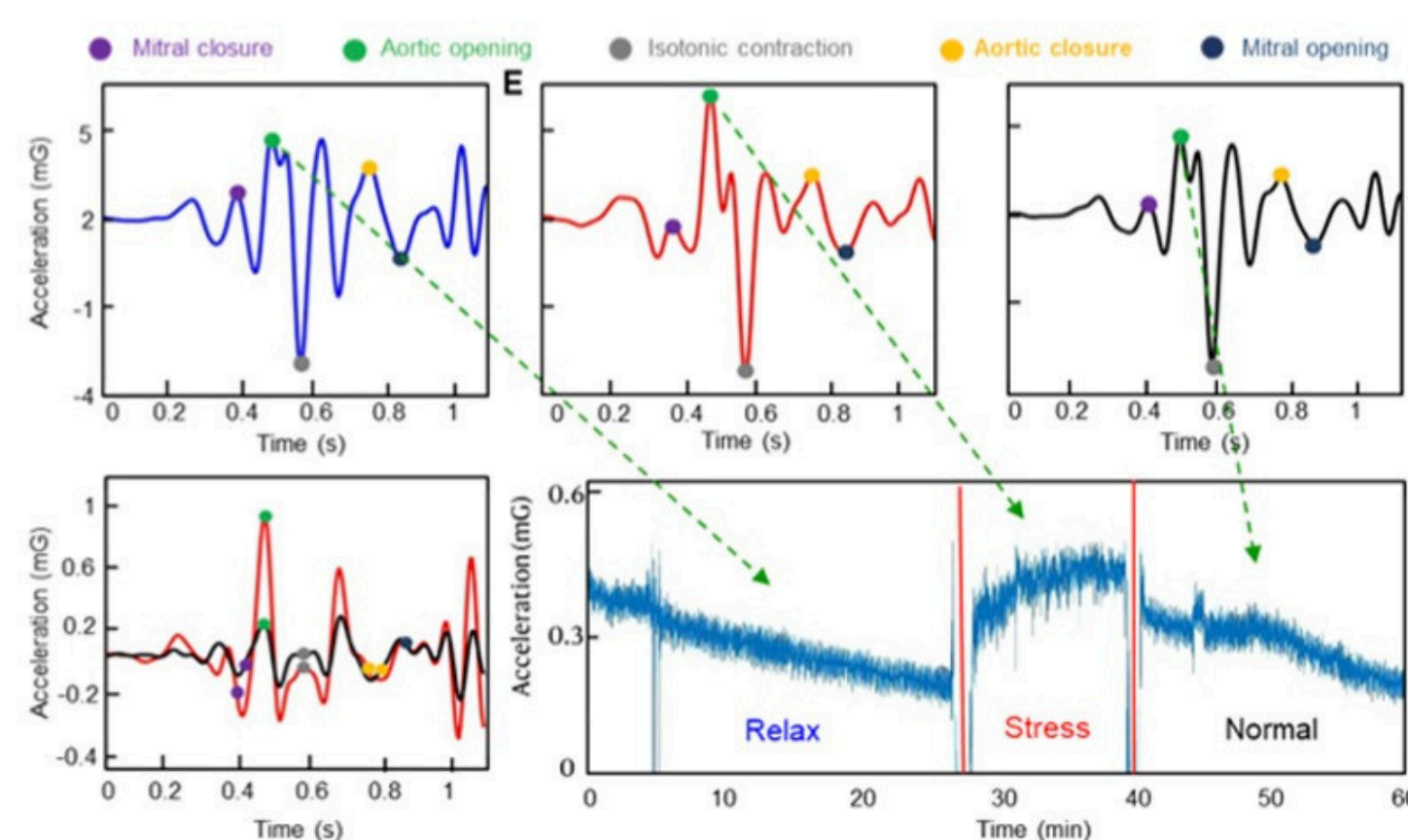
### Advanced Wearable Diagnostics for Underserved Communities



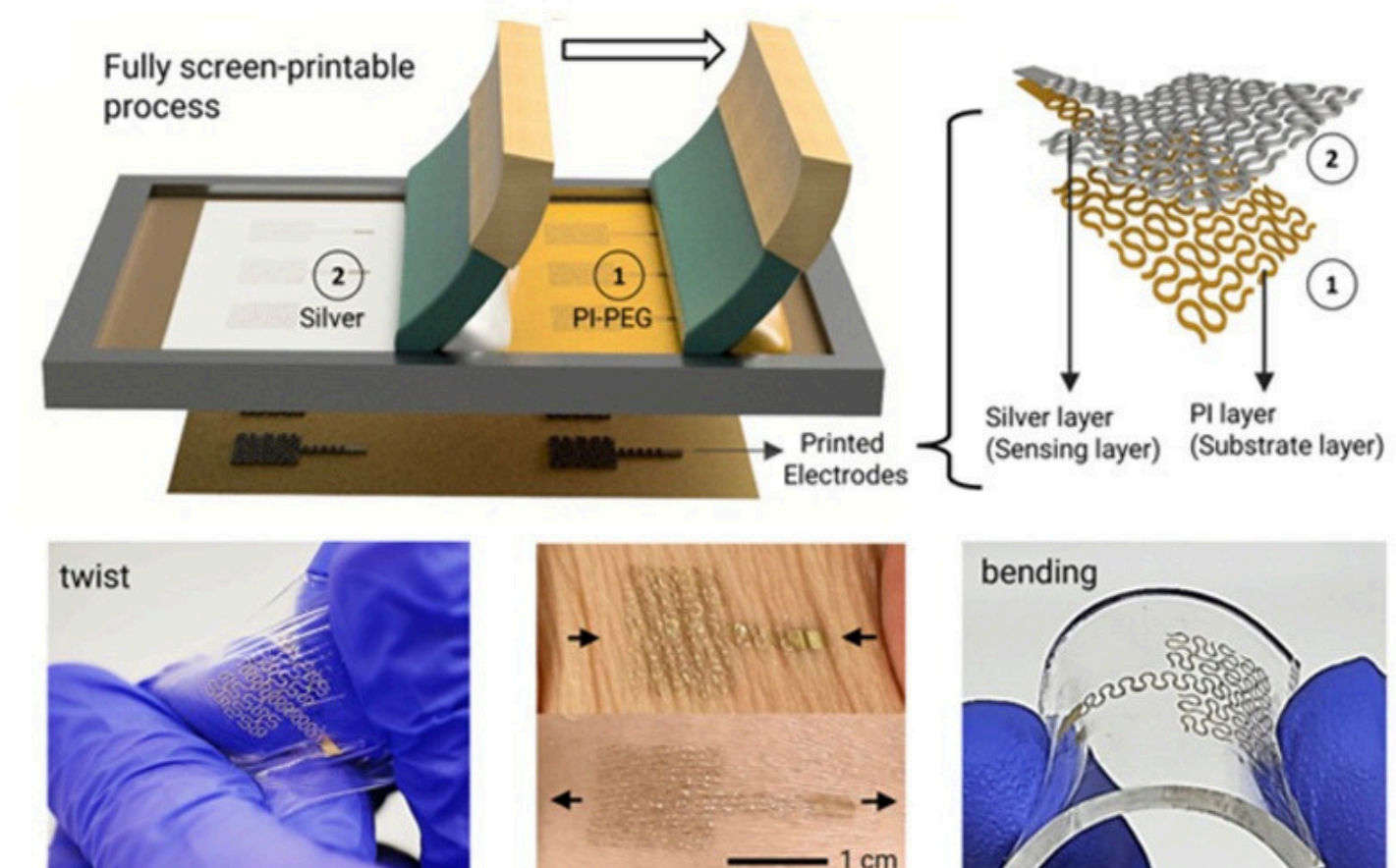
### Skin-like Wearable Device Interfaces



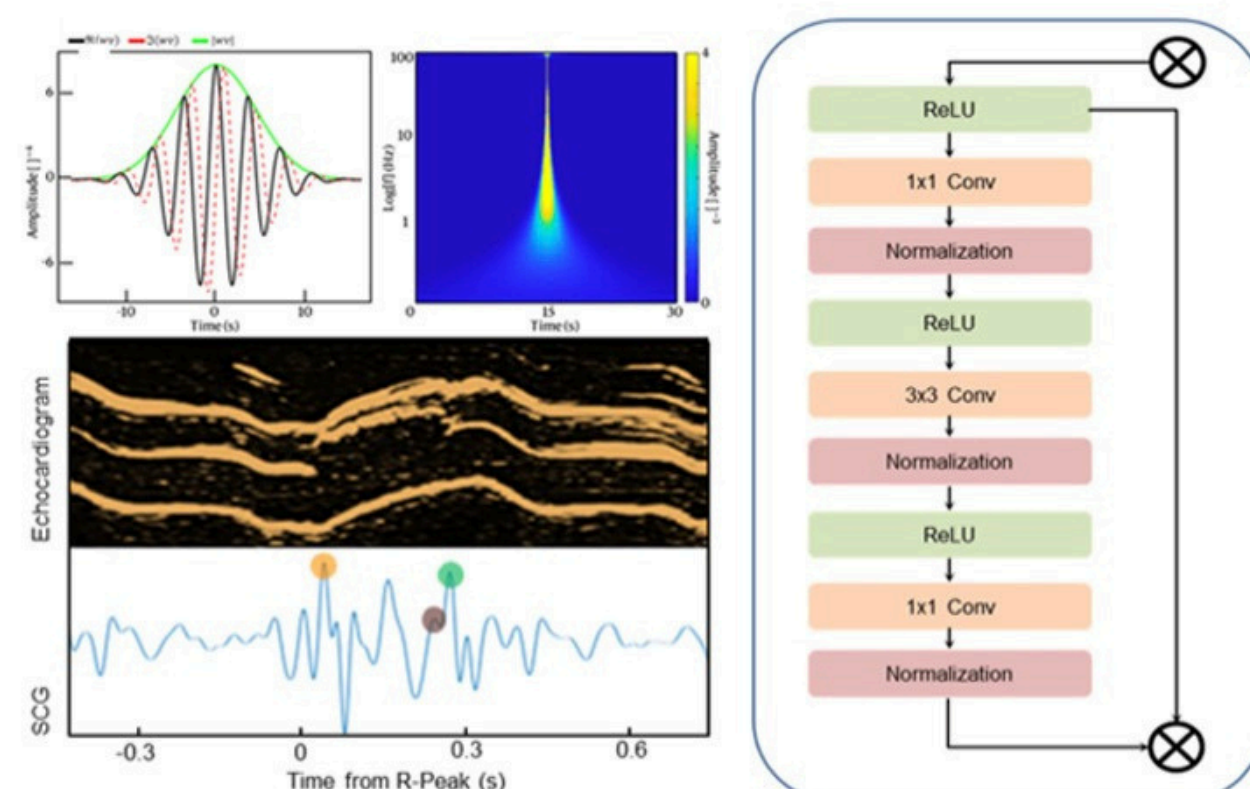
### Biosignal Processing



### Fully Printed Sensor Manufacturing



### Machine Learning for Advanced Diagnostics



**PI:** Woon-Hong Yeo **COLLABORATORS:** Yun Soung Kim, Sung Hoon Lee, Matthew Guess, Yoon Jae Lee, Allison Bateman  
**FUNDING SUPPORT:** NSF Graduate Research Fellowship, ARCS Foundation Award, Georgia Tech IEN

**Scholar Awards Celebration**  
November 15, 2023



**Igniting  
Innovation  
in Georgia**