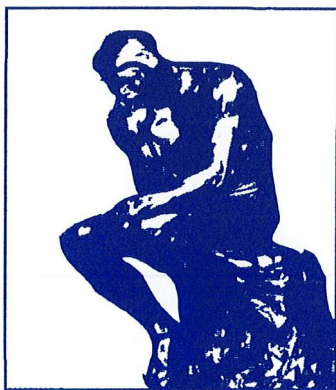


ACHIEVEMENT REWARDS FOR COLLEGE SCIENTISTS

Atlanta Chapter

A R C S



FOUNDATION, INC.

Eight Annual

SCHOLARS AWARDS LUNCHEON

November 9, 1999

ARCS MISSION

The ARCS Foundation is dedicated to helping meet our country's needs for scientists and engineers by providing scholarships to academically outstanding students who are United States citizens in need of financial assistance to complete their higher education, thereby contributing not only to the advancement of science, but also to the material and intellectual welfare of all people.

The Atlanta Chapter of ARCS is grateful to Members and Donors for helping realize our mission.

ARCS FACTS

The ARCS Foundation, Inc., founded in Los Angeles in 1958, recognizes that America's future rests with the young men and women who will invent answers to the scientific and technological challenges we face today. Since its inception, ARCS has given **\$30,762,313** to **7,722** of the brightest students in natural science, medicine and engineering in over 40 schools. **All members are volunteers and 100% of all donations go directly to scholarships.**

Chartered in 1992, the Atlanta Chapter has **110 members, (5 associates and 3 honorary)** and presents scholarships to students from Emory University, Georgia Institute of Technology and Morehouse College. Since its inception, it has **awarded \$406,000** including **\$100,000** for 1999-2000. In addition to its fundraising efforts, the Atlanta Chapter conducts a program of education in scientific issues for its members.

All scholarship recipients must be U.S. citizens, have high scholastic standing, demonstrate real financial need, and express the goal of making a contribution to their community and society in general. The scholars are selected by the recipient schools without regard for race, gender or religious preference. Former scholars head major corporations, contribute significant research in a variety of fields, and help keep America competitive in the world of science and technology.

GREETINGS

Welcome to the eighth annual **Achievement Rewards for College Scientists** Scholars Awards Luncheon.

This year I am both pleased and proud that we are awarding twenty scholarships for the 1999-2000 academic year. Our ARCS scholars from Emory University, Georgia Tech and Morehouse College comprise the brightest and the best students representing five academic disciplines which include biology, chemistry, biological and biomedical science, industrial and systems engineering and mechanical engineering.

Our scholarship funds come from two sources, member dues and scholar donors. This year ARCS member dues are providing ten scholarships and our scholar donors are providing ten scholarships. It is through the efforts of our members, family foundations, corporate foundations and corporations that we have seen the number of scholarships grow from fourteen last year to twenty this year.

We thank each of you for your enthusiastic and energetic support in helping us fulfill our mission of producing the finest scientists across the country.



Deborah Liss

President, ARCS Atlanta

Achievement Rewards for College Scientists

DISTINGUISHED GUESTS

**Dr. William M. Chace, Emory University
President**

**Dr. Charles Liotta, Georgia Institute of Technology
Associate Provost**

**Dr. Willis Sheftall, Morehouse College
Senior Vice President for Academic Affairs**

**Oonagh Boppart, ARCS FOUNDATION, INC.
National President**

**Terrell L. Slayton, Jr.
Assistant Secretary of State**

**Robert Walker, WXIA-TV Atlanta
President & General Manager**

**Chuck Holmes, Corporate Strategies
President**

EXTRAORDINARY THANKS TO OUR SCHOLAR SPONSORS

**BellSouth, Inc
John R. Donnell, Jr., Foundation
Georgia-Pacific Corporation
Georgia Power Company
The Graves Foundation
Imlay Foundation
James R. Kuse Foundation
Nortel Networks
Oracle
Zeist Foundation**

SPECIAL THANKS

**Brenda Wood, WXIA-TV
J. T. Sanderson III – Ernst & Young
Scott Rohm - Ritz-Carlton Atlanta, General Manager
Ralph Daughtry & Bill Bernays, Daughtry & Bernays**

KUDOS FOR ARCS

"ARCS gives corporations the opportunity to support science scholars in a very meaningful way. The universities select the scholars, so we know they are the best and the brightest, and 100% of all donations go directly to the scholars."

Oonagh Boppart, ARCS National President

"Science education not only expands knowledge of the natural laws, but also teaches problem solving, critical thinking and the exhilaration of discovery – essential skills for improving the human condition."

**Marcia & John Donnell, Jr.,
John R. Donnell, Jr. Foundation**

"The opportunities created by exciting scientific breakthroughs demand the best of America's students to meet the challenge in research laboratories. Providing funds for ARCS scholarships today increases the numbers of academically gifted students in mathematics and the sciences to respond to this critical moment in history."

Frances and William Graves, The Graves Foundation

"It is our delight to be able to support the scientific endeavors of ARCS Atlanta recipient schools and to realize how many outstanding women of science and engineering are being trained here. Knowing that all of our donation will be used for a scholarship makes us feel good about ARCS!"

Shirley and Jim Kuse, James R. Kuse Foundation

We are proud to provide financial assistance to a young scholar as a way to invest in a better future for all children. These talented ARCS scientists will advance us toward answers for the challenges of the 21st century in health, environment, and technology in an increasingly close and complex world. Creative research needs opportunity and freedom from economic restraints."

Jean and George Brumley, Zeist Foundation

PROGRAM

WELCOME

Deborah Liss, President, ARCS Atlanta

SCHOLAR VIDEO

GUEST RECOGNITION

Deborah Liss, President ARCS Atlanta

SCHOLAR RESPONSE

Timothy Harris, Morehouse College

LUNCH

SPECIAL PRESENTATION

Jeanne Berry, Co-Chairman Scholars Awards Luncheon
Terrell L. Slayton, Jr. Assistant Secretary of State, State of Georgia

NATIONAL PRESIDENT - ARCS FOUNDATION

Oonagh Boppart

INTRODUCTION OF SPEAKER

Anne Boyd, Co-Chairman Scholars Awards Luncheon

SPEAKER

JAMES H. BLANCHARD

Immediate Past Chairman and Director, The Georgia Research Alliance
"Georgia - The Future is Bright"

UNIVERSITY RESPONSE

Dr. William M. Chace, President Emory University

CONCLUDING REMARKS

Deborah Liss, President ARCS Atlanta

ATLANTA CHAPTER MEMBERSHIP

1999-2000

Madeline Adams	Frances B. Graves*	Catherine Millichap
Helen Aderhold	Nancy H. Green	Susan J. Missbach
Jane W. Alexander	Louise Staton Gunn	Alexandra F. Mitch
Panna B. Ashley.	Betsy G. Hansen*	Sue L. Mobley
Kathy B. Ashe	Mary T. Hardman	Betty N. Mori
Carollee D. Balloun	Katherine R. Harman	Brenda B. Moseley
Lisa Herron Bankoff	Lillo W. Harris	Mary Louise Napier
Elizabeth H. Barnett	Aileen P. Hatcher	Michelle Nordin
Jan K. Bennett	Kitty P. Hawks	Colleen Nunn
Jeanne L. Berry	Peggy L. Henos	Mary B. O'Connor**
Paula Lawton Bevington	Jill Hertz	JoAnne M. Padgett
Anne M. Boyd	Susan Higley	Martha W. Peake
Regina S. Bridges	Ann P. Hill	Elizabeth Pickett
Alice C. Brown	Sally Hinkle	Virginia P. Plummer
Jean S. Brumley	Jane L. Huffard	Dell Peek Rearden
Tricia Byers	Trudy Huger*	Alice H. Richards.
JoAn Chace	Sally C. Jobe	Phyllis E. Rodbell
Lynn P. Cochran	Cecile M. Jones	Jean Thomas Russ
Ada Lee Correll	Carol C. Kelly	Joyce Schwob
Sandra Konrad Cotterman	Anita K. Kern	Nancy Sineath Rank
Ann D. Cousins	Belle W. Kirkpatrick	Elizabeth M. Spiegel
Jill Dahlberg	Ann Estes Klamon	Beverly L. Stacy
Mary Helen Dalton	Nancy R. Kokko	Sue G. Staton
Susie Deyo	Carol A. Kranig	Nita Stokes
Cheryl E. Dixon	Shirley R. Kuse	Lee G. Suddath
Marcia G. Donnell	Lynne C. Land	Mary Rose Taylor
Patsy Drummond*	Patricia S. Leake*	Carol Teem
Theresa Dubsky	Liz Levine	Gail G. Thompson
Eve F. Eckardt	Deborah Liss	Babette J. Tipping
Norma T. Edenfield	Gay Love	Shirley A. Trapp
Carla D. Fackler	Mary M. Lowance	Kathryn H. Tufts
Betty C. Feezor	Catherine Maier	Kay C. Weiss
Jeanne R. Ferst	Kelly E. Markillie	Sally A. West
Susan Friberg	Shirley Massey	Kristin D. Whatley
Mary Gellerstedt	Linda Mauldin	Clare G. Whitfield
Caroline M. Gilham	Margaret McKenna	Susan W. Wieland
Sally B. Gladden	Marcy McTier	Jane J. Wilson
Joan S. Goodhew	Joanie Michaels	Marguerite York
Virginia Eastman Gossage	Harriet Higgins Miller	Camile Yow

**Denotes Founding President

* Denotes Past Presidents

ARCS Foundation, Inc., Atlanta Chapter

1999 - 2000 Board of Directors

Officers

President	Deborah Liss
President-Elect	Sally Hinkle
Past President	Betsy Hansen
Vice President University Relations	Teed Lowance
Vice President Membership	Babette Tipping
Vice President Education	Lisa Bankoff
Recording Secretary	Jane Huffard
Telephone/Corresponding Secretary	Lexie Mitch
Treasurer	Trish Byers
Asstistant Treasurer	Susie Deyo

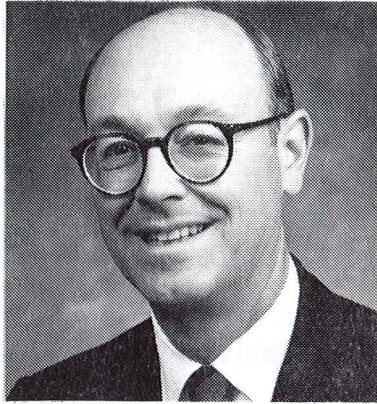
Committee Chairmen & Co-Chairmen

Administration	Aileen Hatcher
Advisory Committee	All Past Presidents
Advisory Communications	Cecy Jones
Database	Peggy Henos
Education	
Field Trips Co-Chairmen	Anita Kern
	Dell Rearden
Retreat Co-Chairmen	Michelle Nordin
	Janie Wilson
	Harriet Miller
Facebook Editor	Phyllis Rodbell
Funds Development	Betty Feezor
Historian/Photographer	Trudy Huger
Newsletter Co-Chairmen	Kay Weiss
	Carla Fackler
Nominating	Brenda Moseley
Public Relations Co-Chairmen	Liz Levine
	Sally Jobe
Scholars Luncheon Co-Charimen	Jeanne Berry
	Anne Boyd
Special Events Co-Chairmen	Liz Levine
	Sally Jobe
University Relations	
Alumni Scholars	Lillo Harris
ARCS Scholars	Jane Alexander

Keynote Speaker

JAMES H. BLANCHARD

Immediate Past Chairman of the Georgia Research Alliance



James H. Blanchard is the Chairman of the Board and Chief Executive Officer of Synovus Financial Corp., a multi-billion dollar, multi-financial services company. This is the company voted #1 in *FORTUNE* magazine's "100 Best Companies to Work for in America" list.

After graduating from the School of Business Administration and the School of Law at the University of Georgia, Mr. Blanchard served as a 1st Lieutenant in the U. S. Army, then practiced law in Columbus, Georgia. Since 1971, he has served as CEO of the Synovus family of companies. By encouraging a decentralized autonomous approach to community banking, Jim Blanchard led Synovus Financial Corp. to become the second largest financial company headquartered in Georgia. In 1983, Jim Blanchard encouraged and supported the creation of Total Systems Services, Inc., one of the world's largest credit, debit and private-label card processing companies.

Examples of his statewide leadership involvement include serving as Chairman and Director of the **Georgia Research Alliance**, a Director of BellSouth Corporation, and Director of the Georgia Chamber of Commerce. Mr. Blanchard's interests and influence go well beyond banking, having led the efforts to beautify the Chattahoochee riverfront and restore to use many residential and industrial structures of Columbus.

His commitment to education has been evident through his service as a member of the State of Georgia Board of Education and the Georgia Partnership for Excellence in Education. He is a Trustee of the Columbus State University Foundation and The University of Georgia Foundation. Mr. Blanchard holds honorary degrees from the University of South Carolina and LaGrange College, and in 1997, *GEORGIA TREND* named him the Most Respected CEO in the state of Georgia.

KUSE FOUNDATION SCHOLAR

EMORY UNIVERSITY

Sarah J. Chevalier

Ph.D. Candidate, Neuroscience

First Year ARCS Scholar



Sarah earned her B.S.E. in Biomedical Engineering from Duke University in 1995, graduating magna cum laude a full semester early. At Duke she gained technical expertise in electrical circuitry, physics and computer modeling of muscles and nerves. Her research activities included building a computer model of the conduction of electricity in the heart during myocardial infarction, building a lie detector, and studying the use of a free electron laser as a surgical therapy for retinal detachment. At Duke she

also led and participated in multiple Bible studies and prayer groups.

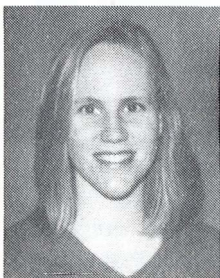
Currently Sarah is in her fourth year of the Neuroscience program at Emory University, where she has twice been awarded the NIH Training in Systems and Integrative Biology Neuroscience Grant. She investigates the changes that take place in the sensory systems of blind humans, specifically, the way visual and tactile areas of the brain interact in both sighted and blind humans. She plans a career in research and teaching.

EMORY UNIVERSITY

Heather B. Patisaul

Ph.D. Candidate, Chemistry

First Year ARCS Scholar



In 1995, Heather graduated with honors from the University of Florida with a B.S. Degree in Zoology. In the summer of 1998 she spent nine weeks in Madagascar with her advisor, Dr. Patricia Whitten, studying the reproductive ecology of *verreauxi sifakas*, a type of lemur. Her dissertation research uses a rat model to examine the impact of phytoestrogens, estrogenic compounds produced by plants, on the brain, with particular interest in how such compounds can affect gene expression and sexual differentiation in children. Her work has already led to

one scientific paper and a book chapter. She sees her work as particularly important given that phytoestrogens are most commonly found in soy-based foods, including soy infant formula. Her career goal is to obtain an academic position that incorporates both research and teaching.

GEORGIA-PACIFIC SCHOLAR

EMORY UNIVERSITY

Bret B. Friday

Md./Ph.D. Candidate, Molecular Therapeutics and Toxicology
First Year ARCS Scholar



Bret earned a B.A. in Biology in 1993 at Boston University. During college, he participated in a research project that sought to determine how cancer-causing chemicals damage DNA. After completing two years of medical school, he began his Ph.D. work under Dr. Grace Pavlath in the Pharmacology Department at Emory. His research is currently aimed at understanding how muscle repairs itself after injury and identifying ways to enhance the repair of muscle tissue. Bret's long-term goal is to bridge the gap between basic science and clinical medicine. He plans to pursue a career in academic medicine and research.

EMORY UNIVERSITY

Christopher S. Straub

Ph.D. Candidate, Chemistry
First Year ARCS Scholar



Christopher S. Straub earned his B.A. degree in chemistry from Franklin and Marshall College in 1990. From 1991 to 1995 he worked for DuPont de Nemours Agricultural Products division as an associate chemist developing novel herbicides. In 1995 he began his Ph.D. studies at Emory University, carrying out research under the direction of Professor Albert Padwa. He was the recipient of a fellowship sponsored by Boehringer Ingelheim Pharmaceuticals for excellence in organic synthesis in 1998. He currently studies the reactivity of complex organic molecules. Following postdoctoral study with Stephen Martin at the University of Texas at Austin, he plans to seek a position with a major pharmaceutical research company.

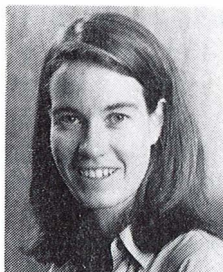
NORTEL NETWORKS SCHOLAR

EMORY UNIVERSITY

Sharon T. Sullivan

Ph.D. Candidate, Chemistry

First Year ARCS Scholar



Sharon earned a B.A. in chemistry from the College of the Holy Cross in 1996. Her past work included positions in the Toxicology department at the Illinois Institute of Technology Research Institute, where she oversaw a number of animal studies and later received the Commitment to Excellence Award in 1995. She studies the interaction of drugs with DNA using advanced analytical techniques to define the molecular structures involved. Her current research involves the study and characterization of interactions between DNA and an analog of the anticancer

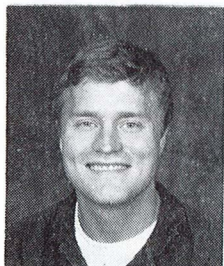
drug, cisplatin. Such studies may help facilitate the development of more effective anticancer drugs. Her career plans involve work in a health policy related field.

EMORY UNIVERSITY

R. Andrew McMillan

Ph.D. Candidate, Chemistry

First Year ARCS Scholar



Andrew is a graduate of the University of North Carolina, where he earned a B.S. in chemistry. His research and career interests involve development of novel protein-based hydrogels for use in biomedical applications. He uses techniques of genetic engineering to manufacture proteins that can be controlled, studied, and manipulated within a laboratory setting and which can be used for the creation of artificial tissues for implantation. For example, his research work is in design of a synthetic protein that mimics

naturally occurring elastin, a vital substance responsible for strength and resilience of cells in the heart and lungs. Collaborations with the Emory School of Medicine are underway to develop vascular grafts and other important applications to tissue engineering. NASA supports his research and graduate studies. His career plans are in the biotech and pharmaceutical industry developing novel approaches to, among other things, combat tissue implant rejection.

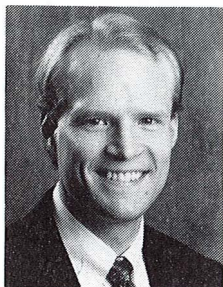
DONNELL FOUNDATION SCHOLAR

EMORY UNIVERSITY

John B. Asbury

Ph.D. Candidate, Chemistry

First Year ARCS Scholar



John earned his B.S. degree in chemistry from The University of Tennessee, where his studies emphasized physics and mathematics. John has interest and extensive experience with LASER spectroscopy, using this technique to follow and predict the course of chemical reactions. Information from this type of study can be applied to reactions involved in converting solar energy to electrical energy and the technique is called Femtosecond Infrared Spectroscopy. John plans to complete his doctorate in physical chemistry and work as a professor in a major

research university, studying ultrafast chemical processes at the solid liquid interface.

IMLAY FOUNDATION SCHOLAR - (1/2 Year)

GEORGIA INSTITUTE OF TECHNOLOGY

Carolyn Conner Seepersad

Ph.D. Candidate, Mechanical Engineering

First Year ARCS Scholar



Carolyn graduated cum laude with a B.S. in Mechanical Engineering from West Virginia University in 1996 and earned a B.A. from the Honour School of Philosophy, Politics, and Economics, Oxford College, Oxford, England, in 1998, where she was a Rhodes Scholar. She is a National Science Foundation Graduate Fellow and a Presidential Fellow. She is a Ph.D. candidate in Mechanical Engineering with an emphasis on systems design. Her research is in the area of product family design,

which is design of core components around which a family of products may be designed and manufactured. Carolyn's dream is to become a university professor because she loves to teach.

IMLAY FOUNDATION SCHOLAR - (1/2 Year)

GEORGIA INSTITUTE OF TECHNOLOGY

Stacey A. Dixon

Ph.D. Candidate, Mechanical Engineering

Fourth Year ARCS Scholar



Stacey A Dixon received her B.S. in Mechanical Engineering from Stanford University in 1993 and her M.S. from Georgia Tech. In 1995. Her dissertation will quantify the mechanical properties of healthy coronary arteries using statistically valid comparisons. Her research involves performing biaxial tests on arteries in order to describe the mathematical relationship between force, pressure, and strain. She has received the National Science Foundation Engineering Fellowship, the American Society of Mechanical Engineers Graduate Teaching Fellowship, and, most recently, the UNCF/Merck Science Initiative Fellowship. She will complete her degree this fall and will seek additional research experience either as a post-doctoral fellow or in industry. She plans a career in academia.

GEORGIA INSTITUTE OF TECHNOLOGY

Staci A. Davis

Ph.D. Candidate, Mechanical Engineering

Second Year ARCS Scholar



Staci received her Bachelor and Master of Science degrees in Mechanical Engineering from the University of California, Berkeley. While an undergraduate, she held a six-month internship at the New United Motors Manufacturing, Inc. automobile assembly plant in quality control engineering. Her current research is in the area of fluid dynamics. She uses nine small jets of air formed from a piezoelectric actuator operating at high frequencies to manipulate a larger jet of air. She is studying the interaction between these jets to enhance mixing of a fuel and oxidizer in the combustor of a gas turbine engine.

She is the recipient of a National Science Foundation/GEE Fellowship. Staci's career goal is a research and teaching position in academia.

GEORGIA INSTITUTE OF TECHNOLOGY

Dawn C. Foley

Ph.D. Candidate, Mechanical Engineering

Second Year ARCS Scholar



Dawn earned a B.S. in mechanical engineering from The Catholic University of America. While there, she and seven classmates designed and built an off-road vehicle. She served as an officer for both the Society of Women Engineers and Habitat for Humanity. She was also elected to the Tau Beta Pi honor society and received the SWE award for excellence in engineering. During her undergraduate experience she spent one summer as an intern for Celwave RF, working in manufacturing and another at Penn State doing research in heat transfer.

Presently at Georgia Tech for her graduate work, she is concentrated in automation and control. She has done research with Ford developing a controller for a continuously variable transmission. Her career plans are to seek an academic or industry research position in control and automation.

GEORGIA INSTITUTE OF TECHNOLOGY

Jay M. Rosenberger

Ph.D. Candidate, Industrial Systems Engineering

First Year ARCS Scholar



Jay earned a B.S. degree in Mathematics from Harvey Mudd College in 1996. In 1997 he earned the M.S. degree in Operations Research from the University of California at Berkeley. He spent the summer of 1997 working for NetExchange in San Diego, California and, in the summer of 1998, he worked in the Industrial Engineering and Operations Research department at Norfolk Southern in Atlanta. Jay's research includes optimization problems that arise in the airline industry and airline simulation analysis. After graduation, he intends either to pursue a post-doctoral

position or to work in industry.

THE GRAVES FOUNDATION SCHOLAR

GEORGIA INSTITUTE OF TECHNOLOGY

Jill R. Hardin

Ph.D. Candidate, Industrial and Systems Engineering

Second Year ARCS Scholar



Jill did her undergraduate work at the University of Kentucky, graduating *summa cum laude* with a B.S. in mathematics in 1996. She is pursuing the Ph.D. in Georgia Tech's program in Algorithms, Combinatorics, and Optimization. Jill is the recipient of a President's Fellowship and an NSF/GEE Fellowship. She spent the summer of 1997 as an intern in Research and Development at United Airlines World Headquarters. Her research interests lie in combinatorial optimization, specifically in the use of linear programming in the development and analysis of

approximation algorithms for scheduling and production planning problems. After graduation, Jill plans to seek a career in academia.

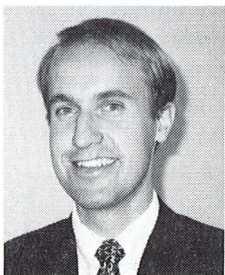
ORACLE SCHOLAR

GEORGIA INSTITUTE OF TECHNOLOGY

Braden K. Hunsaker

Ph.D. Candidate, Industrial and Systems Engineering

First Year ARCS Scholar



Brady earned his B.S. degree in mathematics from Harvard University in 1997, graduating *magna cum laude*. After working for a year in an international school in Stravanger, Norway, he began his graduate studies at Georgia Tech. Brady was recently awarded a National Defense Science and Engineering Graduate Fellowship from the U.S. Department of Defense. His primary research interest is in combinatorial optimization and he is currently working with Professor Craig Tovey on a probabilistic analysis of the effectiveness of cutting planes in

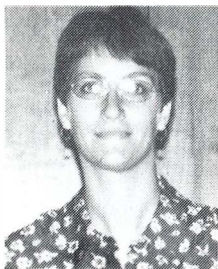
integer programming. He plans to obtain his Ph. D. and intends to work as a professor in an operations research capacity.

GEORGIA INSTITUTE OF TECHNOLOGY

Ashley J. James

Ph.D. Candidate, Mechanical Engineering

Fifth Year ARCS Scholar



Ashley James graduated with honors from the University of Florida in 1990 with a B.S. in Mechanical Engineering. While at Florida she joined the honor societies Tau Beta Pi and Pi Tau Sigma. Ashley then worked for Westinghouse Electric Corporation as a power plant performance analyst. In 1993 she enrolled in the Ph.D. program in mechanical engineering at Georgia Tech. Her area of expertise is interfacial fluid dynamics. Her thesis research is in analysis of the breakup of a vibrating liquid droplet, which has applications in heat exchanger design. Honors

while at Georgia Tech include the high score on Ph.D. qualifying exams and Who's Who Among Students in American Colleges and Universities. She plans a career in academia.

GEORGIA INSTITUTE OF TECHNOLOGY

Eva D. Regnier

Ph.D. Candidate, Industrial and Systems Engineering

Second Year ARCS Scholar



Eva earned her B.S. degree in Environmental Engineering from M.I.T. in 1992, and spent the following year studying and working in France. From 1993 to 1996 she worked for two consulting firms dealing with issues in environmental assessment and remediation. At Georgia Tech her course of study is in Economic Decision Analysis, with applications to decisions having environmental consequences. Her research concentration includes problems involving decisions with irreversible environmental consequences and uncertainty measurement in environ-

mental scoring. She is the recipient of a predoctoral fellowship from the Department of Energy as well as a Georgia Tech President's Fellowship. She was also awarded a National Science Foundation Fellowship. Upon graduation, Eva plans to pursue a career in academia or industry.

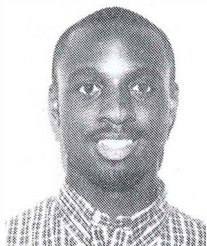
BELLSOUTH SCHOLAR

MOREHOUSE COLLEGE

Timothy J. Harris

Senior, Biology Major

Second Year ARCS Scholar



Timothy is the top-ranking senior Biology major. His research interests have resulted in experiences at Yale, Harvard, and the Morehouse School of Medicine. At Yale, he did research to characterize the sodium bicarbonate cotransporter in mammalian kidney cells. During the summer of 1998-99, he studied mechanisms involved in the function of the C3A receptor and the biophysics of sickle cell anemia at Harvard University. Timothy has been involved for over two years at the Morehouse School of Medicine in a research project aimed at characterizing

virulence factors from *H. Pylori*, the bacterium which can cause gastric ulcer. Consistent with his obvious interest in research, he was admitted to the UMARC Program in the Atlanta University Center, a program which provides training experiences for students planning careers in research. Timothy plans to earn an M.D./Ph.D. degree.

MOREHOUSE COLLEGE

Andre R. Matthews

Senior, Biology Major

First Year ARCS Scholar



Andre is a senior Biology major, Philosophy minor from Chicago. He takes courses in the Honors Program at Morehouse. His research experience has included ongoing work at the Morehouse School of Medicine and two summers of research at the Yale University School of Medicine. He does research at Morehouse on the function of an area of the brain near the region responsible for the biological clock by tracing the paths of neurons originating from these areas to their final destinations. During the

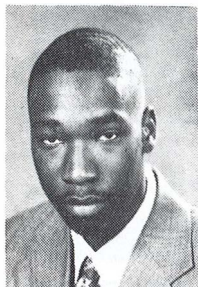
summer of 1999 at the BioSTEP Summer Training and Enrichment Program at Yale, Andre did research on a novel viral protein from Human Herpes virus 8, which is known to demonstrate HIV-inhibitory function in vitro. During the 1998 Southern Regional Philosophy Conference, he presented a paper entitled "Problems Concerning the Theory of Evolution". His career goals include earning an M.D. degree, as well as furthering his research experience.

MOREHOUSE COLLEGE

Marques LeVar Bradshaw

Senior, Biology Major

First Year ARCS Scholar



Marques is a senior Biology major at Morehouse. He has demonstrated his interest in science and medicine over the years through his participation in the Summer Science Institute at Morehouse School of Medicine, Columbia University's Biosphere2, and the Brookhaven National Laboratory. His Participation in Biosphere 2 introduced him to the concept of interdisciplinary solutions to solving global problem. Currently, Marques is working in a lab to help identify potential biomarkers for polychlorinated biphenyl (PCB) exposure in humans using cultured cell lines. After graduation from Morehouse, he plans to study medicine, specializing in Radiology or General Surgery. He plans to open a medical practice in Atlanta, Georgia.

ZEIST FOUNDATION SCHOLAR

MOREHOUSE COLLEGE

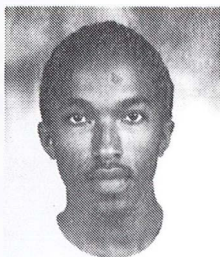
Justin R. Connor

Junior, Biology Major

First Year ARCS Scholar



Justin Connor is a junior Biology major from Sunrise, Florida. He is a National Achievement Scholar and is a member of the College's Honors Program. In addition to working on research at Morehouse on the role of galectin-1 in vascular systems, he has done research identifying "Dioxin-Susceptible Protein Motifs" in the Young Scholars Program at Florida State University. He was introduced to commercial research through an internship with Boehringer Ingelheim Pharmaceuticals during the summer of 1999. Outside of the laboratory, Justin has taught summer science courses and volunteered at a community hospital. He wishes to pursue an M.D. degree.



MOREHOUSE COLLEGE

Kenneth O. Spence

Senior, Biology Major

First Year ARCS Scholar

Kenneth Spence, a senior from Pennsgrove, New Jersey, is pursuing a double major in Biology and Spanish. Having received the Merrill Scholarship for studies abroad, Kenneth spent his junior year in the Dominican Republic. While overseas, in addition to carrying a full course load of academic courses, he participated in an agricultural internship that introduced him to conservation and pest control techniques being implemented in that region. In past summers, he has interned with the John Hopkins Center for Communication Programs and the Student Conservation Association. Ken plans to enter graduate school to pursue a Ph.D. in either plant physiology or entomology. He also plans to continue advancing his knowledge in the Spanish language and culture.

ARCS Foundation, Inc.
Atlanta Chapter Scholars
1992-98/99

Emory University

David Austin
Rene J. Lachicotte
Julie Ann Wurster
William H. Basinger
Angela G. Birchler
Paige N. Vinson
Daniel R. Goldberg
M. David Weingarten - *Nortel Scholar*
Gregory A Bydlinski
Michael J. Rachita
J. Jeffrey McAtee - *Nortel Scholar*
Michael Brodney
Daniel Marshall
Kevin Williams
Krisstina Danek Burgess - *Zeist Foundation Scholar*

Georgia Institute of Technology

Deborah K. Beattie
Jean E. Davis
Ashley J. James
Staci Edlund
Stacey A. Dixon - *Imlay Foundation Scholar*
David M. Wootton - *BellSouth Scholar*
Staci A. Davis
Dawn Foley
Jill Harden - *Graves Foundation Scholar*
Eva D. Regnier - *Georgia Power Scholar*

Morehouse College

Bryan Hurley Derrickson
Michael Lawrence Penn, Jr.
Harry E. Taylor
Rodney Alan
Raul Hackett
Aaron M. Alford
Brandon Johnson
KPJM E. Vance, Jr.
Nathan C. Rowland
Leander Cannick
Walter Cato
Barrett L. Robinson
Timothy J. Harris - *BellSouth Scholar*

A SPECIAL THANKS TO THE
LUNCHEON COMMITTEE MEMBERS

Jeanne Berry & Anne Boyd
Co-Chairmen

Madeline R. Adams
Jane W. Alexander
Reginia S. Bridges
Susie Deyo
Cheryl E. Dixon
Carla D. Fackler
Kathy R. Harmon
Kitty P. Hawks
Peggy L. Henos
Trudy Huger

Cecy M. Jones
Belle W. Kirkpatrick
Ann E. Klamon
Teed M. Lowance
Sue J. Missbach
Lexie F. Mitch
JoAnne M. Padgett
Phyllis E. Rodbell
Nita Stokes
Lee G. Suddath

Jane J. Wilson



ARCS encourages corporations and foundations, as well as individuals to get involved with its program. Donations are tax deductible and 100% goes directly to scholarships.

Name: _____ **Telephone:** _____

Address: _____

City: _____ **State:** _____ **Zip:** _____

This gift is ☐ **in memory of** ☐ **in honor of (if desired)**

Recipient will be notified that a gift has been made in his/her/their honor

Name: _____

☐ Please send me more
information on ARCS

Please make checks payable to
ARCS Foundation, Inc. and mail:
Mrs. Susie Deyo
40 Olde Ivy Square
Atlanta, GA 30342