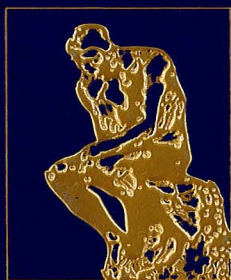

A R C S



FOUNDATION INC

*The Annual Scholarship Awards
Luncheon
2007*

ARCS



FOUNDATION INC

Atlanta Chapter

Program

Welcome

Jan K. Bennett, President

Achievement Rewards for College Scientists Foundation-Atlanta Chapter

Presentation of 2007 ARCS Atlanta Scholars

Lunch

Introduction of Keynote Speaker

The Honorable Kathy Ashe

China's Science: The American Connection

Dr. Mary Brown Bullock

President Emerita, Agnes Scott College

Senior Scholar, Woodrow Wilson International Center for Scholars

Visiting Distinguished Professor of China Studies, Emory University

Moderator

Bill Liss

Business, Financial & Consumer Editor, WXIA-TV

Closing Remarks

Jan K. Bennett

Presenting Sponsor



From the President

Advancing Science in America™ is the mission of the ARCS® Foundation, one of the largest private funders of science education in the United States. Organized and operated throughout the country by more than 1,450 women volunteers, the ARCS Foundation devotes 100 percent of all scholarship contributions to direct support of academically outstanding U.S. scholars pursuing degrees in science and engineering.

This is the 15th Anniversary of the Atlanta Chapter. We owe a debt of gratitude to our sixteen Founding Members, led by Mary O'Connor, whose foresight and dedication have inspired and enabled us to support 393 scholars since 1992. This year the Atlanta Chapter exceeds the \$2 million milestone in the cumulative amount of money raised for scholar support.

Today, we will recognize and honor 34 Scholars from Emory University, the Georgia Institute of Technology, Morehouse College and the University of Georgia. These gifted students are the "best and the brightest" in their field of studies. We are proud to be playing a part in their achievements.

This year also marks the beginning of the celebration of the 50th Anniversary of the National ARCS Foundation, founded in California in 1958 by women who believed that support for science and technology education was of paramount importance. During its half-century of existence, the National ARCS Foundation has funded some 12,000 scholars at 44 partner Universities and has raised more than \$61 million through its 14 local Chapters. We are particularly proud that a member of our Chapter – Janie Wilson – is the new President of the National ARCS Foundation Board.

Support for our Fellowships and Scholarships comes from three sources. There are the 137 ARCS members whose dues fund several scholarships. Then there are those ARCS members who have chosen to provide additional support for the Scholars. Finally, there are the corporations, foundations and families who believe in ARCS and have joined us to create even more scholarships. Today we want to take special note of three donors whose generous support over the years has exceeded \$50,000 – The Graves Foundation, the Imlay Foundation, and the Zeist Foundation.

We extend thanks to our Donors, to our Presenting Sponsor, the Federal Home Loan Bank of Atlanta, and to the Scholars Luncheon Committee, chairs Liz Troy and Helen Jancik, for bringing us this wonderful celebration.

Jan Kesling Bennett

2007 Scholarship Donors

The Einstein Circle

Madeline and Howell E. Adams, Jr. Charitable Trust
Arby's Restaurant Group, Inc.
ARCS Atlanta Membership
Joseph G. and Inez Crawford Burtchaell Foundation
Cooley Family Foundation
James M. Cox Foundation
Marcia and John Donnell
Patsy and Jere Drummond
The Eleven Eighty-Three Fund
Georgia-Pacific Foundation, Inc.
Graves Foundation
Betsy and Harald Hansen
C. Tycho and Marie Howle Foundation, Inc.
Imlay Foundation, Inc.
JH Holdings, Inc.
Sally and Warren Jobe
James R. Kuse Foundation
Sartain Lanier Family Foundation, Inc.
Linda Mauldin
Mellon Private Wealth Management Group
Harriet and Sandy Miller
Mr. and Mrs. Charles B. Rice
Siemens Energy & Automation, Inc.
Spectrum Brands
The Teem Family
Kay and Buddy Weiss
Zeist Foundation, Inc.

2007 Scholarship Donors

The Madame Curie Circle

Kathy and Dennis Berry
Susie and Bill Deyo
Harry and Caroline Gilham Foundation
Deborah and William Liss
Debby and Jim Robbins
Nita Stokes
Dr. William Torres

Century Circle

Mollie Winston Barrow
Jan and Gus Bennett
Mary Alice Blane
Reg and Terry Bridges
Nancy Chambers
Ada Lee Correll
Jane Dolinger
Norma Edenfield
Betty C. Feezor
Marty and John Gillin
Shearon Glover
Joan and Bill Goodhew
Joanne Gross
Louise Gunn
Corrie Johnson

Cecy Jones
Ann and Larry Klamon
Lynne Land
Pat and Nolan Leake
Gay Love
Sherry and John Lundeen
Elizabeth and Frank Martin
Rhonda J. Martin and
Richard A. DeMillo
Leslie and Hugh McLeod
Joanne Michaels
Teed Poe
Anne and Bill Shearer
Deede Stephenson
Sue and John Wieland

Friends of ARCS

The Home Depot
Anne H. Morgan
Sharon S. Quaintance

MONARCS®

We are proud to recognize the following donors who have contributed to the Atlanta Chapter of Achievement Rewards for College Scientists throughout our brief history. Each donor has given a cumulative gift of \$25,000 or more.

Joseph G. & Inez Crawford Burtchaell Foundation

Cooley Family Foundation

Marcia and John Donnell

Patsy and Jere Drummond

Georgia Gulf Corporation

Georgia-Pacific Foundation, Inc.

Graves Foundation

JH Holdings, Inc.

Betsy and Harald Hansen

Imlay Foundation, Inc.

James R. Kuse Foundation

Sartain Lanier Family Foundation

Linda K. Mauldin

Harriett and Sandy Miller

Siemens Energy & Automation, Inc.

Synovus

The Teem Family

Kay and Buddy Weiss

Zeist Foundation, Inc.



Mary Brown Bullock
President Emerita,
Agnes Scott College
Senior Scholar, Woodrow Wilson
International Center for
Scholars, Washington, D.C.
Visiting Distinguished Professor
of China Studies,
Emory University

During her eleven years as president, Agnes Scott College established itself as one of the leading women's colleges in the country. A \$120 million building program transformed the historic campus, the student body nearly doubled, and scores of new faculty were appointed. The Board of Trustees named the college's new science center in her honor.

A longtime China specialist, Dr. Bullock earned her doctorate in Chinese history from Stanford University, and received her B.A. from Agnes Scott College where she was a Phi Beta Kappa graduate. During her just completed sabbatical year, Dr. Bullock was a Public Policy Scholar at the Woodrow Wilson Center in Washington and a Resident Fellow at the Rockefeller Foundation's Conference and Study Center in Bellagio, Italy. She is working on a book titled "The Oil Prince's Legacy: Rockefeller Philanthropy in China." Her publications and research interests are in US-China relations with a particular focus on science and medicine.

Dr. Bullock currently is chair of the China Medical Board of NY, and is a director of the Henry Luce Foundation, the Asia Foundation, and the Genuine Parts Company. She serves on the Carter Center's Advisory Council, the National Science Foundation's Advisory Council on US-China Scientific Cooperation, and the Council on Foreign Relations. At Agnes Scott, she served as chair of the National Association of Independent Colleges and Universities and as a director of the American Council on Education. She is a former director of the Council on International Exchange of Scholars, the senior Fulbright program. She served as the Director of the Asia Program at the Woodrow Wilson Center and as the Director of the Committee on Scholarly Communication with the People's Republic of China at the National Academy of Sciences.

Mary Bullock and her husband George, an energy consultant, live in Decatur.

ARCS At A Glance

Chapters

Atlanta, Georgia
Chicago, Illinois
Denver, Colorado
Honolulu, Hawaii
Los Angeles, California
Lubbock, Texas
Metro Washington, D.C.
Northern California
Orange County, California
Phoenix, Arizona
Pittsburgh, Pennsylvania
Portland, Oregon
San Diego, California
Seattle, Washington

Mission

The ARCS Foundation provides scholarships to academically outstanding United States citizens studying to complete their degrees in science, medicine and engineering, thereby contributing to the worldwide advancement of science and technology.

Achievements

For the 2007-2008 academic year, ARCS chapters are awarding \$4,438,198 to 544 scholars at 44 schools. Since the founding of ARCS, over \$61,000,000 has been awarded to financially assist students of high achievement.

Scholarship Donors and Fundraising

The more than 1,450 members of ARCS are women volunteers who willingly and enthusiastically donate their time, efforts and financial support. Because all scholarship fund solicitation and administration expenses are underwritten or donated by ARCS members, **100%** of all contributions go directly to scholarships.

ARCS Foundation, Inc. provides a way for corporations, civic organizations and individuals in the community to combine resources and efforts to support American scholars, helping to ensure a better future for all. ARCS awards for basic scientific education are the largest of any private membership organization in the United States.

Web Site: ARCSFOUNDATION.ORG

Emory University

Kathryn B. Anderson Torres/ARCS Century Fellowship

**Ph.D. Candidate, Epidemiology
First Year ARCS Scholar**



Katie has worked for several years in infectious disease epidemiology, having received her M.S.P.H. from Emory University in 2002. She has since returned to Emory to pursue a combined M.D./Ph.D. degree in the department of epidemiology. Her proposed dissertation research will address the epidemiology of dengue viruses in SE Asia, as it pertains to ongoing vaccine development efforts. Katie hopes to work as an innovative physician/scientist in the field of global health, specifically vaccine development.

Christopher Bond Zeist Fellowship

**Ph.D. Candidate, Epidemiology
Third Year ARCS Scholar**



Chris earned his B.A. in Biology at LaSalle University in 1991 and Ph.D. in English from the University of Notre Dame in 1998. His research involves the immunization of a high-risk patient population. Chris' doctoral dissertation focused on rhetoric in scientific writing – particularly the scientific article and the peer-review process. He maintains an ongoing interest in processes and methodologies for scientific communication within the medical/research community, particularly in the areas of evidence-based medicine and health services research. Chris' early career was spent teaching writing as an assistant professor at Rowan University; since then, he has worked as a science and medical writer for educational institutions and within the pharmaceutical industry. In addition to completing coursework and exams, Chris has conducted research into vaccination practices in high-risk patients and interventions to improve outcomes. He has presented his findings at the 2006 and 2007 American Society of Nephrology meetings. Chris is married and has an 8-year old daughter.

Emory University

Matthew Boone

Teem Fellowship

**Ph.D. Candidate, Organic Chemistry
First Year ARCS Scholar**



Matthew received his B.A. in Chemistry from the University of Virginia's College at Wise. He is currently a fourth year graduate student at Emory University working in the research laboratory of Professor Frank McDonald. His current research interest involves the design, synthesis, and biological evaluation of unnatural carbohydrate oligosaccharides that possess seven-membered ring sugar monomers. Matthew enjoys playing golf, tennis and spending time with family.

Jill Bordelon

Kuse Fellowship

**Ph.D. Candidate, Neuroscience
Second Year ARCS Scholar**



Jill graduated summa cum laude with a B.S. in Psychology from Louisiana State University. During her undergraduate years, Jill's research was divided between studying the effect of smoking cessation of food intake in women and understanding the effects of stereotypes on source memory. Jill is pursuing a Ph.D. in Neuroscience in order to explore the basic biological mechanisms underlying reward and memory. She is currently a sixth year student in Dr. Chris Muly's laboratory. Jill's research focuses

on determining the cortical anatomical location of receptors and signaling proteins critical for memory functions. She plans to complete her postdoctoral research in memory dysfunction in schizophrenia. She has presented her work at seven neuroscience conferences, has published first-author research articles in *Cerebral Cortex* and *The Journal of Comparative Neurology* and has been awarded a Kirschstein National Research Service Award from the National Institute of Mental Health.

Emory University

Allison Lange

Mellon Fellowship

**Ph.D. Candidate, Biochemistry, Cell and Development Biology
Third Year ARCS Scholar**



Allison received her B.A. degree in Genetics, Cell, and Developmental Biology from Dartmouth. As an undergraduate, she worked in a lab at Washington University focusing on the regulation of ion channel activity. She also worked in the product safety division at Monsanto studying mechanisms of drug toxicity. At Emory, she has won numerous awards, including Best Poster Presentation at the Emory Graduate Student Research Symposium and Outstanding Graduate Presentation at the Southeastern Regional Yeast

Meeting. Her current research combines biochemical, genetic and physical techniques to investigate the mechanisms of nucleocytoplasmic transport in *Saccharomyces cerevisiae*.

Jeffrey W. Mercante

Berry/Robbins Fellowship

**Ph.D. Candidate, Microbiology and Immunology
Second Year ARCS Scholar**



Jeff received his B.A. degree from Southern Methodist University. He then attended Louisiana State University where he received his M.S. in Microbiology studying an *in vitro* transposon-based system for the genetic manipulation of the zoonotic pathogen *Brucella*. He is currently a fifth year student in the Microbiology and Molecular Genetics Program working in the laboratory of Dr. Tony Romeo. His research has focused on understanding the molecular aspects of CsrA, a small global regulatory protein found in a diverse

array of bacteria, including *Escherichia coli*. In his spare time Jeff enjoys traveling and fixing his Vespa.

Emory University

Troy Querec

The Eleven Eight-Three Fund Fellowship

Ph.D. Candidate, Immunology

Second Year ARCS Scholar



Troy received his B.S. in Biochemistry from the University of Maryland. There he was fortunate to be accepted into the Science, Technology, and Society Scholars Program where he studied how societal policies and science influence each other. He then worked as a scientific technician for two years at Fox Chase Cancer Center. Troy is a sixth year student in the laboratory of Dr. Bali Pulendran. His career objectives are to integrate scientific disciplines to further our understanding of disease mechanisms and disease prevention

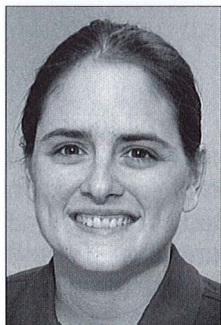
and treatment, especially in terms of immunology and inflammation. His first publication in the Journal of Experimental Medicine focuses on the cellular signaling pathways that are activated by the yellow fever vaccine 17D (YF-17D) to give potent and long lasting protective immune responses. The completion of his thesis research will provide in-depth information regarding the mechanisms of the very effective yellow fever vaccine; this information can be applied to the design of other vaccines.

Jennifer Sorrells

Adams Fellowship

Ph.D. Candidate, Organic Chemistry

Second Year ARCS Scholar



Jennifer received her B.A. degree in Chemistry from The College of Wooster, Ohio. She studied phospholipids analogues for her undergraduate thesis and generating protein kinase inhibitors in a post-graduate year at Vanderbilt School of Medicine. Her research in the laboratory of Dr. Fredric Menger focuses on self-assembly of amphiphilic molecules in aqueous solutions, such as those molecules found in soap related products. She has presented her research at domestic and international conferences and has

published in peer-reviewed journals, including the Journal of the American Chemical Society. Outside of the laboratory, Jennifer enjoys getting lost during her international travels, camping in the great outdoors and creating concoctions in the kitchen.

Emory University

Shana Topp

Donnell Fellowship

**Ph.D. Candidate, Chemical Biology
Second Year ARCS Fellowship**



Shana graduated from Emory University in 2004 with a B.S. in Biology and a B.S./M.S. in Chemistry, with Highest Honors. Mentored by Dr. Justin Gallivan, Shana developed biomaterials that form reversible networks in response to calcium ions. Now an Emory Ph.D. candidate, she is reprogramming bacteria to migrate toward new chemicals. She aspires to a career in teaching and academic research.

Georgia Institute of Technology

Andrea Forte

Cooley Fellowship

**Ph.D. Candidate, Human-Centered Computing
Fifth Year ARCS Scholar**



Andrea received a B.A. degree in Foreign Languages and Literature from Western Michigan University in 1996. She earned multiple merit-based awards, including a scholarship to attend the University of Passau in Germany. After earning a Master's degree in Library and Information Science from the University of Texas, an interest in human-computer interaction led her to a professional position as an interface designer. In 2002, Andrea returned to school to explore the design of effective computer-based environments

for human learning and communication. She is working with Mark Guzdial to investigate media manipulation and creation as a context for engaging students of the humanities and other disciplines in computer science. Andrea is also working with Amy Bruckman to explore the design of online environments and digital libraries to support communities of history learners.

Donavon R. Gerty

Jobe Fellowship

**Ph.D. Candidate, Mechanical Engineering
Second Year ARCS Scholar**



Donavon received his B.S. degree in Mechanical Engineering from University of Dayton in 2000. While finishing his undergraduate work, he co-oped with Hamilton Sundstrand in Rockford IL for several semesters. Donavon is a sixth year Ph.D. student in the Fluid Mechanics Research lab under the instruction of Dr. Ari Glezer. His research concentrates on implementing forced convective cooling for small-scale electronics such as cell phones and PDAs. He has presented his thesis research at several fluid dynamics

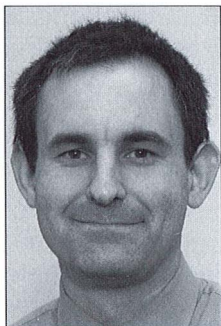
conferences, as well as presenting work for a secondary project at several electronics packaging conferences including one in Budapest this September.

Georgia Institute of Technology

Michael Hewitt

Hansen Fellowship

**Ph.D. Candidate, Industrial & Systems Engineering
First Year ARCS Scholar**

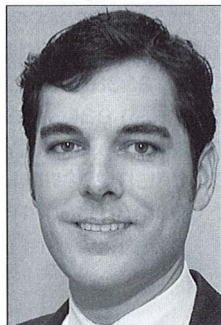


Mike is from Rochester Hills, Michigan. He received a B.S. in Mathematics and an M.S.E. in Industrial and Operations Engineering from the University of Michigan. Before beginning his Ph.D., Mike spent 5 years in industry as a software engineer. His primary research interest is in optimization, specifically integer and combination-al optimism, with application to transportation systems. His latest work can apply to the load-planning problem and how to route freight in a cost effective manner.

Shelby Highsmith

Miller Fellowship

**Ph.D. Candidate, Mechanical Engineering
Second Year ARCS Scholar**



Shelby completed a dual-degree program at the University of Notre Dame, majoring in Aerospace Engineering and Philosophy. He then worked as a program manager in Propulsion Technology Development for Honeywell Engines & Systems overseeing multidisciplinary research programs. An assignment in the accident investigation group inspired Shelby to pursue a Ph.D. studying mechanics of materials, fatigue and fracture mechanics with Prof. Steve Johnson. He is studying the durability of aerospace materials, attempting to predict the directions in which fatigue cracks will grow under the complicated vibratory stress in turbine engines. After declaring a minor in International Affairs, he received a fellowship from the Sam Nunn Security Program to study issues in technology and international security. Outside of school, Shelby writes on three weblogs and was communications director for a political action group. He plans to pursue a government-related career in science and technology policy.

Georgia Institute of Technology

Janine B. Johnson

Graves Fellowship

**Ph.D. Candidate, Mechanical Engineering
First Year ARCS Scholar**



For her undergraduate degree, Janine attended Arkansas State University, and then attended Georgia Tech where she received her Master's degree in 2004. Janine is currently pursuing her Ph.D. at Tech and studies failure mechanisms of the composite materials that are used in hydrogen fuel cells at high temperatures. She is also chair of a student-led organization that provides social and professional development activities for female graduate students.

Charlotte Kotas

Weiss Fellowship

**Ph.D. Candidate, Mechanical Engineering
Fifth Year ARCS Scholar**



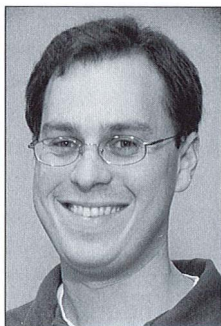
As a mechanical engineering student at Georgia Tech, Charlotte (B.S., University of Tennessee, 2001 and M.S., Georgia Tech, 2003) uses fluids and acoustics to guide her doctoral research on the role of streaming flows in a model fish ear. This research involves experimental models of steady fluid flows, applying to understanding fish hearing, and therefore underwater sensor design. Recent honors include the GE Faculty of the Future Fellowship Award (2007) and the Gallery of Fluid Motion in 2006. Charlotte hopes to complete her graduate studies soon and pursue an academic career.

Georgia Institute of Technology

Michael Pennock

Drummond Fellowship

**Ph.D. Candidate, Industrial & Systems Engineering
Second Year ARCS Scholar**



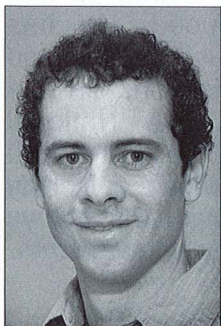
Michael received his B.S. and M.S. degrees in Systems Engineering from the University of Virginia in 2002 where he received the Biomimicry prize for undergraduate research for work in genetic programming. While at UVa, Michael worked for the Center for Risk Management of Engineering Systems and conducted research in the areas of critical infrastructure protection, project risk management, and optimal highway maintenance management. After graduating, Michael worked as a systems engineer for the

Northrop Grumman Corporation on the Missile Defense National Team where he focused on developing system architectures for the US missile defense system. Michael currently works for the Tennenbaum Institute for Enterprise Transformation where his thesis research focuses on improving defense acquisition and technology policy. His current study could contribute to the reform of defense acquisition policies.

Dylan Shepardson

Imlay Fellowship

**Ph.D. Candidate, Industrial & Systems Engineering
Second Year ARCS Scholar**



Dylan has degrees in Physics from Amherst College and UC Berkeley and is working toward a Ph.D. in Algorithms, Combinatorics, and Optimization at Georgia Tech. Dylan is interested in applications of optimization techniques to problems in social and biological sciences. His research at Georgia Tech has involved problems in neurobiology and voting theory, and he is currently working on an algorithm for developing self-assembling neuronal models. The goal of his study is to allow

neuroscientists to build mathematical models quickly and easily. Dylan has lived overseas and enjoys traveling and virtually all sports.

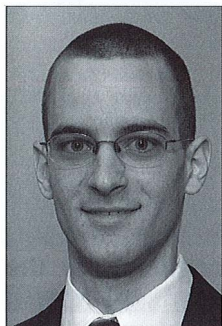
Georgia Institute of Technology

Andrew Smith

Howle Fellowship

**Ph.D. Candidate, Industrial & Systems Engineering
Third Year ARCS Scholar**

Andrew earned a B.S. degree in Mathematics with a second major in Linguistics from the University of North Carolina where he was inducted into Phi Beta Kappa. His Ph.D. studies are in the Applied Statistics group, where his research focuses on nonlinear dimension reduction, a new area of study with numerous applications, including image processing and voice recognition. His work has potential applications to a wide variety of fields including speech recognition, image process and genomics. Currently, he is working on the development of a unified theoretical framework for methods in this area. He also recently co-authored a book chapter giving a survey of the techniques of dimension reduction. Outside of school, Andrew's hobbies include badminton and playing the piano.

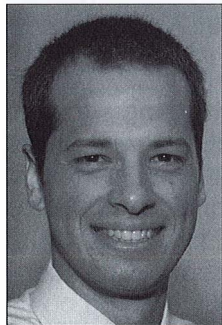


Khalid Sorensen

Siemens Fellowship

**Ph.D. Candidate, Mechanical Engineering
First Year ARCS Scholar**

Khalid's research concerns controlling flexible structures such as cranes and long reaching robotic manipulators. He develops techniques for moving these structures so that oscillation is significantly reduced. He has authored or coauthored ten publications, and obtained one patent related to his work. He is a former NSF STEP Fellow, USAA National Collegiate Engineer, and current member of the ASME. He aspires one day to become a university professor. He is an outdoor enthusiast, who enjoys frequent rock climbing and backpacking ventures.



Georgia Institute of Technology

Tracy L. Westeyn

**ARCS Century Fellowship
Ph.D. Candidate, Computer Science
First Year ARCS Scholar**



Tracy's primary research areas are on-body sensing, wearable computing, and machine learning. Currently, she is researching the use of wireless sensors to support the early diagnosis of children with autism and other developmental delays. She is a Google Anita Borg Memorial Scholar for the year 2006-07. Tracy is also an instructor for Kennesaw State University's CyberTech II program, an introductory computer science course aimed at involving underrepresented students in technology oriented

fields. Outside of the lab, she is an active member of the Women@CC organization which helps support women in computer science at Georgia Tech and served as its co-president for the 2006-07 academic year. She has a black belt in Shaolin Kung Fu and was both president and goalie for the GaTech women's lacrosse club.

Morehouse College

Mark W. Cunningham, Jr.

Georgia Pacific Scholarship

**Junior, Biology Major
First Year ARCS Scholar**

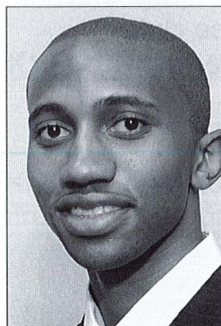


Mark is from Decatur, Georgia. He is an active member of the Health Careers Society, serving as this year's president. For the last two summers, he researched at Johns Hopkins and Harvard. In the laboratory of Dr. Valerie Haftel, Mark is investigating the role of calcium on neuronal growth. Findings from this data may aid in diagnosing and combating diabetic neuropathy. His future aspiration is to pursue an M.D./Ph.D. in the field of cancer biology or neurology.

Austin Dixon

JH Holdings Scholarship

**Senior, Biology Major
Second Year ARCS Scholar**



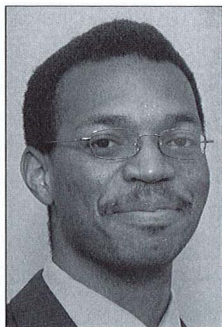
Austin is from Albany, Georgia. At Morehouse, he is a Biochemistry tutor and researches the regulation of glucokinase. At Harvard Medical School, during the summer of 2007, Austin studied the role of endothelial cells in the smooth muscle cell proliferation seen in vascular pathologies. In the future, he plans to conduct translational research.

Morehouse College

Britt A. L. Gayle

ARCS Century Scholarship

**Junior, Biology Major
First Year ARCS Scholar**

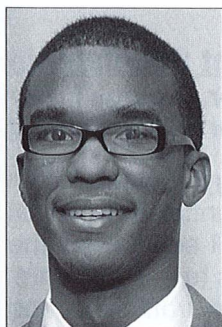


Britt is from Falls Church, Virginia, and is currently studying Biology, International Studies and Public Health. This past summer he researched techniques to optimize the multi-locus sequence typing of *Streptococcus pneumoniae* samples at the Centers for Disease Control. In the laboratory of Dr. Genevieve Gallagher, he is attempting to optimize the procedure. His postgraduate plans include pursuing an M.D./Ph.D. in the field of international health at Johns Hopkins University.

Desmond Moore

Rice Scholarship

**Senior, Biology Major
Second Year ARCS Scholar**



Desmond is from Chicago, Illinois. He has participated in the MBRS-RISE program, and is currently a member of the MARC/U*STAR program, Undergraduate Research Scholars program, National Society of Collegiate Scholars, Dean's List and Honor Roll. Desmond has volunteered his service in Ghana as an Urban Scholar and in South Africa with Operation Crossroads Africa. He is presently conducting research in the laboratory of Dr. Andreas Bommarius of the Chemical & Biomolecular

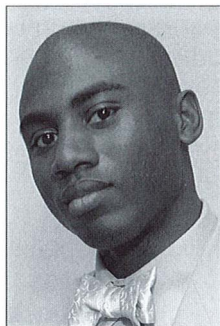
Engineering Department of Georgia Tech. His research focuses on improving protein engineering. He has presented his research at the 18th Annual Mapp symposium, where he earned second place on his poster presentation. Desmond plans to obtain an M.D./Ph.D. or Ph.D. in biomedical engineering. Outside of science, Desmond enjoys painting, playing tennis and basketball.

Morehouse College

Andre Okoreeh

Cox Scholarship

**Senior, Biology Major
Second Year ARCS Scholar**



Andre is currently a senior at Morehouse College in pursuit of a triple major in Biology/Physics/Chemistry with a minor in Mathematics. Originally from Compton, California, Andre entered Morehouse research at Morehouse School of Medicine in Immunology and biochemistry. His research spans from DNA damage and repair at Ohio State University to biophysics collaboration with Morehouse and Spellman in analysis of Chitosan complexes. At Morehouse, he is a MARC/U*STAR scholar and president of Circle K/Kiwanis Club. Also, he is a member of Beta Kappa Chi Scientific Honor Society. Andre plans to pursue an M.D./Ph.D. with a focus in biophysics or bioengineering. Currently, Andre has concentrated in research in Biochemistry at Morehouse College.

Jonathan Singletary

Leake ARCS Light Scholarship

**Junior, Biology Major
First Year ARCS Scholar**



Jonathan is a Junior Biology Major from Sunnyvale, CA. He is a Presidential Scholar at Morehouse and a MARC/U*STAR scholar for the 2007-08 and enjoys using his gifts to serve others. This past summer he studied the trafficking and activity of natural killer cells and the graft-versus-tumor effect in allogeneic bone marrow transplants. He plans to pursue at Ph.D. in immunology and eventually do research in Africa.

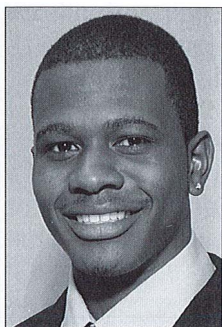
Morehouse College

Eric S. Toone

ARCS Century Scholarship

Senior, Chemistry and French

Second Year ARCS Scholar



In the laboratory of Dr. Lance Shipman-Young, Eric is investigating the kinetic activities of m-RNA splicing variants analogous to human liver glucokinase regulatory protein (GKRP) that are found in hepatic, nervous, and duodenal tissues. GKRP is the major controller of Glucokinase (GK) activity. GK serves as the primary glucose sensor in the body via its enzymatic facilitation of the phosphorylation of glucose to glucose-6-phosphate in liver tissues. Eric wishes to pursue a career in medicine. Beyond his interests in science, Eric has

an affinity for foreign languages - French, Japanese and Spanish. He also enjoys running, weightlifting and football.

The University of Georgia

Geneva J. DeMars

Mauldin Fellowship
Ph.D. Candidate, Biochemistry and Molecular Biology
First Year ARCS Scholar



After receiving a B.S. in Systems Engineering from the University of Virginia, Geneva joined the Ph.D. program in the Department of Biochemistry and Molecular Biology at UGA under the guidance of Dr. J. David Puett. She studies the molecular landscape between the human lutropin receptor, a seven transmembrane receptor, and its cognate signaling partner, the stimulatory G protein. This signal transduction pathway is vital for normal reproduction in mammals and its mechanisms have been conserved across the evolution of higher organisms. She has presented her research at many national and international conferences as well as in peer-reviewed journals. During her graduate career at UGA, she has been President of the Biochemistry Graduate Student Association and has served in other leadership and mentoring positions within her department. Also, she has helped the Student Academic Honesty Council maintain and extend a *Culture of Honesty* across the UGA campus.

Sarah A. Eisenstein

Burtchaell Fellowship
Ph.D. Candidate, Neuroscience
Second Year ARCS Scholar



Sarah received her B.S. degrees in Neuroscience and Psychology from Tulane University and her M.A. in Psychology from Southeastern Louisiana University. Sarah is currently a fourth year student at Georgia and conducts her research in the laboratory of Dr. Andrea Hohmann. Her research focuses on the comorbidity of vulnerability to drug sensitization and psychiatric disorder in a rodent model. Sarah has presented past research at several conferences. Sarah is a recipient of UGA's Dissertation Completion Award. She has published a manuscript in *Pharmacology, Biochemistry & Behavior*. Besides research, she enjoys spending time with friends, family and pets, as well as listening to music.

The University of Georgia

Jillian H. Hurst

Spectrum Brands Fellowship

**Ph.D. Candidate, Pharmaceutical and Biomedical Sciences
First Year ARCS Scholar**



Jillian received her B.S. degree in Chemistry from Mary Washington College where she studied drug binding to growth factors involved in neovascularization. At UGA her research centers around the characterization of Regulator of G-protein Signaling (RGS) proteins as therapeutic modulators of signaling pathways contributing to the progression of ovarian cancer under the guidance of Dr. Shelley Hooks. Jillian has presented her research at national conferences and currently has several papers under review.

She has been awarded a pre-doctoral fellowship from the American Foundation for Pharmaceutical Education, was inducted into the Blue Key Honor Society, and was named Outstanding Teaching Assistant and Junior Graduate Student of the Year by the Department of Pharmaceutical and Biomedical Sciences.

Jodell Linder

Gilham/Stokes Fellowship

**Ph.D. Candidate, Genetics
First Year ARCS Scholar**



Jodie received her B.A. degree in Biology at the University of California, Santa Barbara. At UGA, Jodie is advised by Dr. Daniel Promislow. She is studying the effect of temperature on immune function in insects. Advances in this field are critical for the control of vector born diseases and agricultural pests. Her thesis in Genetics is Temperature, Immunity and Tradeoffs in *D. Melanogaster*. Jodie has presented her work at both national and international scientific meetings and published her findings in the *Journal of*

Evolutionary Biology, Proceedings of the Royal Society of London, and PNAS. In her spare time Jodie enjoys running, juggling and tie-dyeing.

The University of Georgia

Dawn M. Penn

Lanier Fellowship

**Ph.D. Candidate, Family and Consumer Sciences
Second Year ARCS Scholar**



Dawn received her B.S. degree in Nutrition from Penn State University and completed her Dietetic Internship at Iowa State University. She then received her M.S. degree in Foods and Nutrition at UGA. She worked as a clinical research assistant/dietitian at the VA Hospital/Duke University. She returned to UGA to pursue her doctoral degree under the direction of Dr. Ruth Harris. Her current research focuses on the role of the adipokine, leptin, in regulating fat cell growth using *in vitro* cell culture and *in vivo* models of genetic and diet induced obesity. Dawn has presented her research at national conferences and has published in the *American Journal of Physiology-Regulatory, Integrative and Comparative Physiology* as well as co-authoring a book chapter. In her spare time, Dawn enjoys cycling, running and spending time with her friends, family and dog.

Norman K. Pollock

Arby's Fellowship

**Ph.D. Candidate, Family and Consumer Sciences
First Year ARCS Scholar**



Norman has B.S. degrees in Exercise Science and Dietetics, and received an M.S. degree in Foods and Nutrition while completing a Dietetic Internship at UGA. His work demonstrated that competitive sports activity in youth can favorably influence long-term bone health years after retirement from competitive sports. Under the direction of Dr. Richard Lewis at UGA, his work focuses on the role of adiposity on bone strength. Norman has presented his research at the national level and abroad. He shared preliminary data from his doctoral research at the *6th International Symposium on Nutritional Aspects of Osteoporosis* in Lausanne, Switzerland. He has published his work in *Osteoporosis International* and in *The American Journal of Clinical Nutrition*. In his spare time, Norman enjoys spending time with his wife and their three furry children.

The University of Georgia

Laura E. Williams

Deyo/Liss Fellowship

Ph.D. Candidate, Microbiology

Second Year ARCS Scholar



Laura received her B.S. in Biology from Illinois Wesleyan University. During her undergraduate education, she was a summer research intern at Eli Lilly in Indianapolis, where she conducted research in the infectious diseases division and the prostate cancer division. After graduation, Laura was a research fellow at the Centers for Disease Control and Prevention in Atlanta. At UGA, under the guidance of Dr. Anne Summers, she is studying the distribution and diversity of plasmids in the foodborne pathogen *Salmonella*

enterica. The generous support of the ARCS scholarship enabled Laura to attend the Workshop on Molecular Evolution this summer at the renowned Marine Biological Laboratory in Woods Hole, Massachusetts.

ARCS Atlanta Chapter Membership

Madeline R. Adams
 Mary L. Adams
 Helen M. Aderhold
 Jane Woods Alexander
 Angela Z. Allen
 Sharon Ansley
 Kathy B. Ashe *F*
 Lisa Herron Bankoff
 Millie Winston Barrow*
 Jan K. Bennett
 Jeanne L. Berry
 Kathleen Berry
 Paula L. Bevington *F*
 Mary Alice Blane
 Sally C. Boice
 Anne M. Boyd
 Berney M. Bridges
 Regina S. Bridges
 Alice C. Brown
 Nancy Chambers*
 Eileen H. Christman
 Gracia M. Conn
 Margaret P. Cooley
 Lynn M. Cornett
 Ada Lee Correll
 Ann D. Cousins
 Susie Deyo
 Constance V. Dimling
 Cheryl E. Dixon
 Jane F. Dolinger
 Marcia G. Donnell
 Patsy Drummond *F*
 Anne Deeley Easterly*
 Norma T. Edenfield
 Carla D. Fackler
 Betty C. Feezor
 Sharon F. Flores
 Marie Brumley Foster
 Michelle Gandy
 Caroline M. Gilham
 Martha B. Gillin
 Sally B. Gladden
 Shearon Glover*
 Joan S. Goodhew
 Elsie L. Gould
 Frances B. Graves *F*
 Kathryn H. Graves
 Joanne C. Gross
 Louise Staton Gunn
 Betsy G. Hansen
 Laura Jones Hardman*

Katherine R. Harman
 Lillo W. Harris
 Aileen P. Hatcher
 Kitty P. Hawks *F*
 Joan Heazel*
 Susan J. Higley
 Ann P. Hill
 Sally N. Hinkle
 Marie Howle
 Jane L. Huffad
 Trudy Huger *F*
 Kimberley Ichter*
 Mary Ellen Imlay
 Helen M. Jancik
 Pamela Short Jenkins
 Sally C. Jobe
 Trina L. Johns
 Corazon Johnson*
 Cecile M. Jones
 Ingrid Saunders Jones
 Randy Jones
 Anita K. Kern
 Ann E. Klamon
 Margaret Kresge
 Lynne C. Land
 Elizabeth Mori Lauer
 Patricia S. Leake
 Liz Levine
 Deborah Liss
 Betts C. Love
 Gay Love *F*
 Sherry Bond Lundeen
 Catherine C. Maier
 Elizabeth Martin
 Rhonda J. Martin
 Shirley A. Massey
 Linda T. Mauldin
 Susan McGonigle
 Leslie D. McLeod
 Joanne T. Michaels
 Jane Miles
 Harriet Higgins Miller
 Catherine Millichap
 Susan J. Missbach
 Sue L. Mobley
 Anne H. Morgan
 Betty N. Mori
 Brenda B. Moseley
 Mary Louise Napier
 Michelle Nordin *F*
 Kay M. O'Connor

Mary B. O'Connor *F*
 Martha W. Peake
 Virginia P. Plummer
 Teed M. Poe
 Sharon S. Quaintance
 Kathy Ranier
 Nancy Sineath Rank
 Stephanie Reeves
 Vicki Riedel*
 Deborah C. Robbins
 Phyllis E. Rodbell
 Jean Thomas Russ
 Lynn Cochran Schroder
 Anne Morse Shearer
 Deborah J. Shelton
 Eileen Hodges Small
 Elizabeth M. Spiegel
 Beverly L. Stacy
 Patricia H. Stephenson
 Nita Stokes
 Lee G. Suddath
 Frances Swensson*
 Carol Teem *F*
 Babette J. Tipping
 Elizabeth Troy
 Pat Tuff
 Margaret S. Wasson
 Brooke T. Weinmann
 Kay C. Weiss
 Kristin D. Whatley
 Clare G. Whitfield *F*
 Susan W. Wieland *F*
 Barbara S. Williams
 Jane J. Wilson
 Marguerite York

**New Members*

F-Founding Members

ARCS Atlanta Chapter Past Presidents

Mary O'Connor, 1992-1994

Founder, Atlanta Chapter

Patsy Drummond, 1994-1995

Trudy Huger, 1995-1996

Frannie Graves, 1996-1997

Pat Leake, 1997-1998

Betsy Hansen, 1998-1999

Deborah Liss, 1999-2000

Sally Hinkle, 2000-2002

Janie Wilson, 2002-2004

Teed M. Poe, 2004-2006

ARCS Foundation, Inc, Atlanta

Chapter

Board of Directors

Officers

President	Jan Bennett
President Elect	Sherry Lundeen
Vice President for Communications	Barbara Williams
Vice President for Education	Susan Higley
Vice President for Funds Development	Debbie Shelton
Vice President for Membership	Carla Fackler
Vice President for University Relations	Deede Stephenson
Recording Secretary	Lynn Cornett
Treasurer	Pam Jenkins
Parliamentarian	Eileen Christman

Committee Chairs & Co-Chairs

ARCS Scholars Chair	Peg Cooley
Vice Chair	Gracia Conn
Alumni Scholars Chair	Mary Ellen Imlay
Assistant Treasurer	Kay Weiss
Assistant VP for Education	Sally Boice
Member Relations Chair	Cathey Millichap
Vice Chair	Elizabeth Martin
Nominations Chair	Kathy Berry
Public Relations Chair	Debbie Liss
Special Events Co-Chairs	Michelle Gandy
	Stephanie Reeves
2008 Retreat Co-Chairs	Ada Lee Correll
	Susie Deyo
2007 Scholars Luncheon Chair	Liz Troy
Chair-Elect	Helen Jancik
Database Chair	Ronnie Martin
Directory Chair	Liz Mori Lauer
Historian	Reg Bridges
Newsletter Editor	Jane Dolinger
Newsletter Co-Publishers	Lisa Bankoff
	Pat Leake
Administrative Assistant to the President	Jeanne Berry

Scholarship Awards Luncheon Committee

Liz Troy, Chair

Helen Jancik, Chair-Elect

Ambassadors

Jane Dolinger, Chair

Michelle Gandy, Shearon Glover,
Elsie Gould, Pam Jenkins, Sally Jobe,
Liz Mori Lauer, Elizabeth Martin, Linda Mauldin,
Leslie McLeod, Elizabeth Spiegel,
Lee Suddath and Mollie Winston

Invitations - Addressing

Nancy Chambers, Shearon Glover and
Corrie Johnson

Registration

Kristin Whatley, Chair

Susie Deyo, Betts Love, Margaret Kresge
and Brooke Weinmann

Decorations

Kimberley Ichter

Menu

Liz Troy and Helen Jancik

Scholar Photography

Gracia Conn

Program

Kay Weiss and Corrie Johnson

Public Relations

Debbie Liss

Reservations & Name Tags

Lisa Bankoff

Seating

Liz Troy and Helen Jancik

Scholar Relations

Peg Cooley

University Relations

Deede Stephenson

Funds Development

Debbie Shelton, Chair

Mary Alice Blane, Joanne Chessler-Gross,
Shearon Glover, Kimberly Ichter, Vicki Riedel
and Frances Swensson

In Great Appreciation

The Board of Directors of the Atlanta Chapter of Achievement Awards for College Scientists extends special appreciation to the following individuals whose time and talents contributed to the success of our annual celebration.

Federal Home Loan Bank of Atlanta Print Services Department

Invitation and Program

Jim Fitts Photography

Bill Liss

The Ritz-Carlton, Atlanta

David Caine, Meetings & Special Events

Our Partnership Schools

Emory University, President James Wagner
Georgia Institute of Technology, President G. Wayne Clough
Morehouse College, President Robert M. Franklin
University of Georgia, President Michael F. Adams

ARCS Scholarship Awards Luncheon Committee and Membership