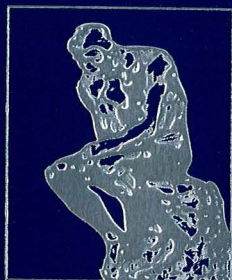

A R C S



FOUNDATION INC

*The Annual Scholarship Awards
Luncheon
2008*



ATLANTA CHAPTER FALL 2008 LUNCHEON PROGRAM

Welcome

Sherry Lundeen, President
Achievement Rewards for College Scientists Foundation,
Atlanta Chapter

Presentation of 2008 ARCS Atlanta Scholars

Invocation

Sister Valentina Sheridan, RSM

Lunch

Introduction of Keynote Speaker

Debbie Liss

Donald G. Stein, Ph.D.

Asa G. Candler Professor of Emergency Medicine,
Emory University School of Medicine

Moderator

Bill Liss

Business, Financial & Consumer Editor, WXIA-TV, Atlanta

Closing Remarks

Sherry Lundeen

The History of ARCS® Foundation

In 1957, in the aftermath of the Soviet launching of Sputnik, a group of women in Los Angeles came together with the commitment to re-establish U.S. technological superiority. ARCS Foundation was founded with idealism and patriotism in mind, its goal to financially assist students of high achievement in the natural sciences, medicine and engineering.

On Sept. 5, 1958, Achievement Rewards for College Scientists Foundation, Inc. was formally incorporated as a nonprofit corporation in California, the culmination of ten months of intensive effort by its founders, Florence Malouf, Irene Slagel, Alice Tyler and Helena Wooldridge. They were ably advised in this ambitious endeavor by Dr. Lee A. DuBridge, president of the California Institute of Technology.

A national board of 53 philanthropic leaders was established and a Los Angeles chapter of 69 members was organized. The first brochure contained a letter from President Dwight D. Eisenhower congratulating them and offering wishes for continued success. From inception in Los Angeles, the organization has grown to 14 chapters in 11 states. As opportunities arise, further chapters will be chartered.

The National Board of ARCS must approve the colleges and universities that chapters select for funding, as well as the departments and programs at those institutions. A scholar receiving an award must be a citizen of the United States and have a high scholastic record and demonstrated ability. Institutions receiving the funds administer them and select students without regard to race, creed or gender.

The ARCS Foundation is one of the largest contributors to basic science education of any private membership organization in the United States. The ARCS Foundation works differently than many scholarship organizations in that 100 percent of all scholarship contributions go directly to the scholars and fellows. In addition, resources from corporations, foundations and individuals combine to support American scholars, helping to insure a better future for all. As an all-volunteer organization, members take a personal interest in supporting the scholars and keep in touch with scholars throughout their academic careers, and often beyond.

ARCS® Foundation At A Glance

Chapters

Atlanta, Georgia
Chicago, Illinois
Denver, Colorado
Honolulu, Hawaii
Los Angeles, California
Lubbock, Texas
Metro Washington, D.C.
Northern California
Orange County, California
Phoenix, Arizona
Pittsburgh, Pennsylvania
Portland, Oregon
San Diego, California
Seattle, Washington

Mission

The ARCS Foundation provides scholarships to academically outstanding United States citizens studying to complete their degrees in science, medicine and engineering, thereby contributing to the worldwide advancement of science and technology.

Achievements

In the academic year 2007-2008, over 1,450 ARCS Foundation members awarded \$4,553,958 to 43 schools for a cumulative total of \$66,342,962 and 12,084 scholar awards since its founding. Chapter endowments for scholarship support now total \$12,524,518.

Web site: arcsfoundation.org

ARCS is registered in the U.S. Patent and Trademark Office.

MONARCS®

We are proud to recognize the following donors who have contributed to the Atlanta Chapter of Achievement Rewards for College Scientists throughout our brief history.

Donors who have given cumulative gifts of \$50,000 or more:

Marcia and John Donnell
Georgia-Pacific Foundation
Graves Foundation
Betsy and Harald Hansen
Imlay Foundation, Inc.
Zeist Foundation, Inc.

Donors who have given cumulative gifts of \$25,000 or more:

Madeline and Howell E. Adams, Jr. Charitable Trust
Joseph G. & Inez Crawford Burtchaell Foundation
Cooley Family Foundation
Patsy and Jere Drummond
Georgia Gulf Corporation
JH Holdings, Inc.
James R. Kuse Foundation
Sartain Lanier Family Foundation
Linda K. Mauldin
Harriett and Sandy Miller
Siemens Energy & Automation, Inc.
Synovus
The Teem Family
Kay and Buddy Weiss

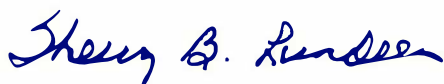
From the President

The Atlanta Chapter of the ARCS® Foundation, Inc. welcomes you to our 17th annual Scholars Luncheon. Advancing Science in America™ is the mission of the ARCS Foundation, one of the largest private contributors of science education in the United States. Organized and operated throughout the country by more than 1400 women volunteers, the ARCS Foundation devotes 100 percent of all scholarship contributions to direct support of academically outstanding U.S. scholars pursuing degrees in science and engineering.

Today we will recognize and honor 34 academically outstanding science and engineering students from Emory University, the Georgia Institute of Technology, Morehouse College and the University of Georgia. These gifted students are the “best and the brightest” in their fields of study. We are proud to be playing a part in their achievements.

We would like to say thanks a million to all of our donors! This year ARCS Atlanta will have awarded a cumulative total of over \$2.1 million to 427 scholars pursuing studies in scientific and technological innovation. The scholar support comes from three sources. A portion of the dues paid by 133 ARCS members helps fund several scholarships; then there are those ARCS members who have chosen to provide additional financial support for the scholars; and, finally, corporations, foundations and families who believe in ARCS and the ARCS mission have joined to create more scholarships. We hope some of you today who hear our message and are impressed by our phenomenal scholars will be inspired to become our newest ARCS Scholarship Donors. It is important that you know that one hundred percent of all scholarship contributions goes directly to the scholars.

In closing, I would like to extend my sincere thanks to co-chairs Gracia Conn and Helen Jancik and their entire Scholars Luncheon Committee, all of whom have worked to make this a memorable day for our scholars, members and guests.

A handwritten signature in dark ink, reading "Sherry B. Sundeen". The signature is fluid and cursive, with the first name "Sherry" being more prominent and the last name "Sundeen" following in a similar style.

President, ARCS Foundation, Atlanta Chapter

2008 Scholarship Donors

Einstein Circle

Madeline and Howell E. Adams, Jr. Charitable Trust
Kathelen and Dan Amos
ARCS Atlanta Membership
Joseph G. and Inez Crawford Burtchaell Foundation
Cooley Family Foundation
Marcia and John Donnell
Patsy and Jere Drummond
The Eleven Eight-Three Fund
Georgia-Pacific Foundation
Graves Foundation
Betsy and Harald Hansen
Imlay Foundation, Inc.
Joachim Herz Memorial Fund
Sally and Warren Jobe
Sartain Lanier Family Foundation, Inc.
Linda Mauldin
Harriet and Sandy Miller
Mr. and Mrs. Charles B. Rice
Siemens Energy and Automation, Inc.
The Teem Family
Turner Enterprises
Kay and Buddy Weiss
Zeist Foundation, Inc.

Madame Curie Circle

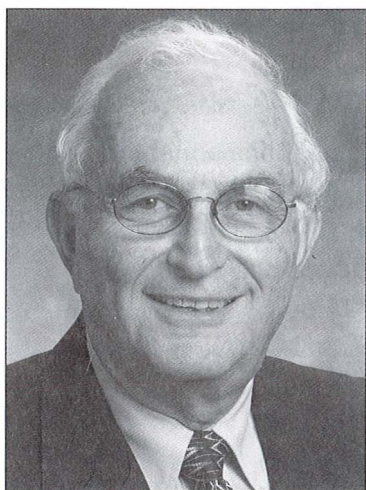
Kathy and Dennis Berry
Ada Lee Correll
Susie and Bill Deyo
Harry and Caroline Gilham Foundation
KSi/Structural Engineers
Deborah and William Liss

Century Circle

Stacey F. and John R. Adams
Angela Z. Allen
Sharon Ansley
Mollie Winston Barrow
Jan and Gus Bennett
Mary Alice and W.J. Blane
Reg and Terry Bridges
Nancy Chambers
Jane Dolinger
Norma Edenfield
Betty C. Feezor
Shearon Glover
Joan and Bill Goodhew
Joanne Chesler Gross
Louise Gunn
Cecy Jones
Sarah Kennedy
Ann and Larry Klamon
Lynne Land
Pat and Nolan Leake
Gay Love
Sherry and John Lundeen
Elizabeth and Frank Martin
Rhonda J. Martin and Richard A. DeMillo
Leslie and Hugh McLeod
Joanne Michaels
Teed Poe
Debbie and Charlie Shelton
Elizabeth Troy
Sue and John Wieland
Brooke T. Weinmann

Friends of ARCS

Cynthia Evans	Eva E. Regnier
The Fresh Market	Northern Trust
Kathryn Graves	Ted Maloof
Marguerite Peele Fine Stationery	



Donald G. Stein, Ph.D.

Asa G. Candler Professor
of Emergency Medicine,
Emory University School of Medicine,
Atlanta, Georgia

Donald G. Stein, Ph.D. is a physiological psychologist and Asa G. Candler Professor of Emergency Medicine at the Emory University School of Medicine in Atlanta, Georgia.

Stein's research has long focused on recovery of function after traumatic injury to the brain. His was one of the first contemporary groups to confront the doctrine of localization of function, by demonstrating that sparing of function in adult subjects can occur after removal of 'critical' structures. The first lab to demonstrate sex differences in the outcome of severe injuries to the frontal cortex, Stein's group found that recovery was highly related to the hormonal state of the females at the time of injury, and later showed that the neurosteroid progesterone promotes functional recovery by reducing cerebral edema in both males and females. His laboratory now studies the actions of progesterone and its metabolites in pediatric, adult and aged models of TBI and stroke. His group collaborates with medical colleagues in emergency medicine, neurology, radiology, pediatrics and neuro-ophthalmology to examine how different kinds of brain injuries can be repaired at the morphological and functional levels.

Dr. Stein has authored over 400 articles and book chapters on recovery from brain injury. He has also written or edited 16 books on the topic and lectured at institutions around the world. *Brain Repair* (Oxford University Press, 1995) has been published in five languages.

Emory University

Kathryn Anderson

ARCS Century Fellowship

MD/Ph.D. Candidate, Epidemiology

Second Year ARCS Scholar



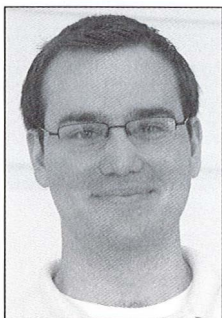
Katie is an M.D./Ph.D. candidate at Emory University, presently conducting her Ph.D. research in the department of epidemiology at the Rollins School of Public Health. She is originally from Bloomington, Minnesota and received her Bachelors degree from the University of Wisconsin-Madison in 1997 and her Masters of Science in Public Health from Emory University in 2002. Her Ph.D. research focuses on the associations of pre-existing dengue virus immunity with the risks of dengue transmission, infection, and disease. In the past year, she has submitted two abstracts which have been accepted for poster presentations; this work will be presented at the International Dengue Conference in Phuket, Thailand, and at the American Society of Tropical Medicine and Hygiene conference in New Orleans this year.

Matthew Boone

Teem Fellowship

Ph.D. Candidate, Organic Chemistry

Second Year ARCS Scholar



Matt is from Wise, Virginia. He graduated in 2004 from the University of Virginia's College at Wise with a B.A. in chemistry. Currently Matt is a fifth year Ph.D. candidate in organic chemistry working in the laboratories of Professor Frank McDonald. His current research focuses upon biomimetic approaches to the synthesis of marine natural products that possess interesting polycyclic ether frameworks. After completing his Ph.D., Matt plans to pursue a post-doctoral appointment followed by a career in the chemical industry.

Emory University

Seth Childers

Correll/ARCS Century Fellowship

Ph.D. Candidate, Chemistry

First Year ARCS Scholar



As an undergraduate Seth studied chemical engineering at Georgia Tech then worked as a chemical engineer at Merck for five years. Graduate research in the past four years focused on understanding how amyloid peptides self-assemble into an array of functional and toxic architectures. Future plans are aimed at applying engineering principles to understand the interface of biological and nanomaterials assembly.

Krista Yorita Christensen

Donnell Fellowship

Ph.D. Candidate, Epidemiology

First Year ARCS Scholar



Krista is from Honolulu, Hawaii. She earned a B.A. in Anthropology at Northwestern University. In 2006, Krista entered the Ph.D. program in Epidemiology at the Rollins School of Public Health at Emory University. She has since passed her qualifying examination and proposed her dissertation research, which focuses on pubertal development of girls, and the effects of exposure to persistent organic pollutants on age at menarche.

Emory University

Morna A. Ikeda

Zeist Fellowship

**Ph.D. Candidate, Genetics & Molecular Biology
First Year ARCS Scholar**



Morna graduated from Northwestern University in 2000 with a B.A. in Molecular and Cell Biology. From 2000-2005, her work studying the genetics of complex disease at Johns Hopkins resulted in five co-authored publications. Joining Emory University Graduate Division of Biological and Biomedical Sciences in 2005, Morna began her doctoral degree identifying genetic mutations in autism. Morna hopes her findings will result in new diagnostic tests and therapies.

Heather A. Mitchell

**The Eleven Eighty-Three
Fund Fellowship**

**Ph.D. Candidate, Pharmacology
First Year ARCS Scholar**



Heather received her B.A. in Behavioral Neuroscience from Connecticut College. She then worked as a research technician at the CBR Institute for Biomedical Research in Harvard Medical School before beginning her Ph.D. studies in the Graduate Division of Biological and Biomedical Sciences at Emory University in the laboratory of David Weinschenker. Her dissertation research deals with learning the mechanism of action of modafinil, a commonly-used wake-promoting medication.

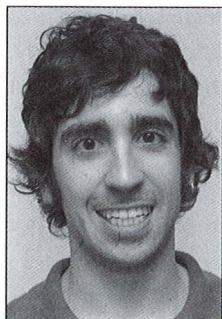
Emory University

Joseph Sabatino, Jr.

Turner Fellowship

Ph.D. Candidate, Immunology

First Year ARCS Scholar



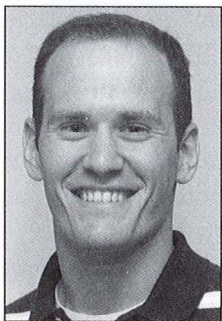
Joe graduated magna cum laude from Colgate University in 2002 with a B.A. in Neuroscience and a minor in German. In 2002, he received a Fulbright Fellowship to Germany. He entered the M.D./Ph.D. program in the Graduate Division of Biological and Biomedical Sciences at Emory University in 2004 and joined the Immunology and Molecular Pathogenesis program in 2006. His dissertation work involves investigating T cell tolerance in an animal model of multiple sclerosis.

Aaron Thornton

Adams Fellowship

Ph.D. Candidate, Chemistry

First Year ARCS Scholar



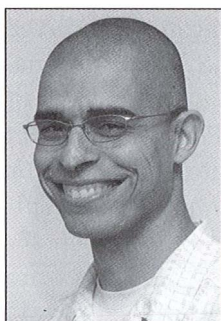
Aaron Thornton is originally from Lincoln, Nebraska. He received a B.A. with Honors in Chemistry from Knox College in Galesburg, Illinois. Aaron is currently in his 3rd year as a graduate student in the Chemistry Department at Emory University, working in the lab of Dr. Simon Blakey. His research project is focused on organometallic reaction methodologies and more specifically with the development of a new metallonitrene/alkyne cascade reaction. When not in the lab he enjoys relaxing at home and playing/watching football and baseball.

Emory University

Terrence Michael Wright, Jr.

Amos Fellowship

**Ph.D. Candidate, Neuroscience
First Year ARCS Scholar**



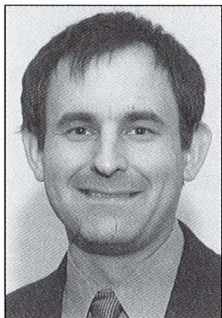
Michael matriculated to the Graduate Program in Neuroscience in the Graduate Division of Biological and Biomedical Sciences at Emory University in 2004, where he currently works in the lab of Dr. Ronald Calabrese. Michael's thesis research is investigating mechanisms that underlie how we perform rhythmic motor movements, such as locomotion. Michael has presented his research at multiple scientific conferences and has received multiple fellowships that fund his research.

Georgia Tech

Michael Hewitt

Hansen Fellowship

**Ph.D. Candidate, Industrial & Systems Engineering
Second Year ARCS Scholar**

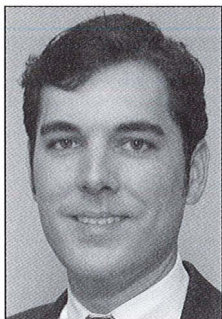


Mike is from Rochester Hills, Michigan. He received a B.S. in Mathematics and an M.S.E. in Industrial and Operations Engineering from the University of Michigan. Before beginning his Ph.D., Mike spent five years in industry as a software engineer. His primary research interest is in optimization, specifically integer and combinatorial optimization, with application to transportation systems. His latest work can apply to the load-planning problem and how to route freight in a cost effective manner.

Shelby Highsmith

Miller Fellowship

**Ph.D. Candidate, Mechanical Engineering
Third Year ARCS Scholar**



Shelby completed a dual-degree program in Aerospace Engineering and Philosophy at the University of Notre Dame in 1997. He worked as a program manager in Propulsion Technology Development for Honeywell Engines & Systems overseeing multidisciplinary research programs. Shelby returned to school at Georgia Tech in 2001, studying mechanics of materials, fatigue, and fracture mechanics with Prof. Steve Johnson. He is minoring in International Affairs and received a fellowship from the Sam

Nunn Security Program to study policy issues in technology and international security; he plans to pursue a government-related career in science and technology policy.

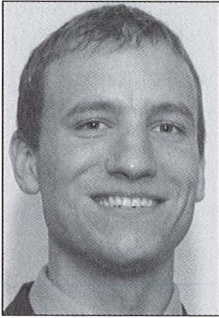
Georgia Tech

Jonathan Hurff

KSi/ARCS Century Fellowship

Ph.D. Candidate, Civil Engineering

First Year ARCS Scholar



Jonathan is from West Deptford, New Jersey. He completed his undergraduate studies at Virginia Tech in Civil Engineering. He is currently performing his Ph.D. research on the structural stability of precast prestressed bridge girders considering sweep and thermal effects. His postgraduate plans include continuing in academia with research interests in experimental testing, structural stability, building systems and fatigue analysis.

Janine Johnson

Graves Fellowship

Ph.D. Candidate, Mechanical Engineering

First Year ARCS Scholar



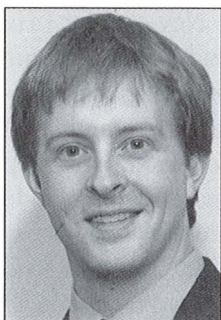
For her undergraduate degree, Janine attended Arkansas State University, and then attended Georgia Tech where she plans to receive her Ph.D. in mechanical engineering. For her dissertation, Janine studies the complex composites used in environmentally friendly fuel cells. Using computer simulations she determines the structural and failure behavior of the metal ceramic composite. Janine is also active in a student led organization that provides social and professional development activities for female graduate students.

Georgia Tech

Scott Kasprzak

ARCS Century Fellowship

**Ph.D. Candidate, Mechanical Engineering
First Year ARCS Scholar**



Scott is originally from Delaware and obtained his Bachelors of Mechanical Engineering from the University of Delaware. His undergraduate research covered computer visualizations and composite manufacturing. He is a member of the American Society of Mechanical Engineers, Phi Kappa Phi Honor Society and Tau Beta Pi Engineering Honor Society. He is currently pursuing his Ph.D. in Mechanical Engineering at the Georgia Institute of Technology where he is investigating small-scale polymer behavior. After graduation he plans to go into industry.

Adam O'Neill

Drummond Fellowship

**Ph.D. Candidate, Computer Science
First Year ARCS Scholar**



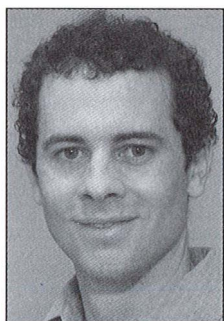
Adam is from Pleasanton, California. He did his undergraduate studies in Mathematics and Computer Science at the University of California, San Diego, where he was a member of the Alpha Epsilon Pi Fraternity and Phi Beta Kappa Honor Society. He is currently pursuing a Ph.D. in Computer Science at the Georgia Institute of Technology. His research is in cryptography, the science of making and breaking codes.

Georgia Tech

Dylan Shepardson

Imlay Fellowship

**Ph.D. Candidate, Industrial & Systems Engineering
Third Year ARCS Scholar**



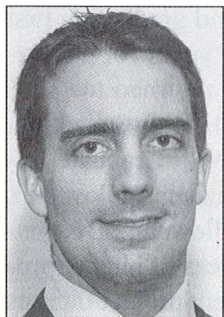
Dylan has degrees in Physics from Amherst College and UC Berkeley and is working toward a Ph.D. in Algorithms, Combinatorics and Optimization at Georgia Tech. Dylan is interested in applications of optimization techniques to problems in social and biological sciences. His research at Georgia Tech has involved problems in neurobiology and voting theory, and he is currently working on an algorithm of developing self-assembling neuronal models.

The goal of his study is to allow neuroscientists to build mathematical models quickly and easily. Dylan has lived overseas and enjoys traveling and virtually all sports.

Dan Steffy

Jobe Fellowship

**Ph.D. Candidate, Industrial & Systems Engineering
First Year ARCS Scholar**



Dan was born and raised in Royal Oak, Michigan. Now a Georgia Tech Ph.D. student in Algorithms, Combinatorics and Optimization, his research focus is the development of exact precision techniques for optimization. He served as president of the Graduate Student Advisory Committee, and has captained several intramural sports teams. He also plays bass with Atlanta jazz ensemble Style Points.

Georgia Tech

Stephanie C. Thompson

Cooley Fellowship

**Ph.D. Candidate, Mechanical Engineering
First Year ARCS Scholar**



Originally from Kennesaw, Georgia, Stephanie has studied Mechanical Engineering at Georgia Tech since the fall of 2000, earning a Bachelors degree in May 2005 and a Masters degree in August 2007. Currently, she is pursuing a doctorate in the area of engineering design methodology. In her research she studies design decisions to determine better ways for using the information generated by design activities.

Alejandro Toriello

ARCS Century Fellowship

**Ph.D. Candidate, Industrial & Systems Engineering
First Year ARCS Scholar**



Alejandro was born in Guatemala City, Guatemala. He completed his undergraduate studies at Georgia Tech in 2003, obtaining a BSIE and graduating first in his major. After working two years for Power-Plan Consultants, Inc., Alejandro returned to ISYE at Tech in 2005 to pursue a Ph.D. in optimization. His academic awards include an NSF Graduate Research Fellowship, a Roberto Goizueta Fellowship, and a Georgia Tech President's Fellowship. His general research interests are in the areas of integer pro-

gramming and combinatorial optimization, and his current project focuses on maritime logistics. Alejandro lives in Pine Lake, Georgia with his wife, Catherine.

Georgia Tech

Tracy Westeyn

Weiss Fellowship

Ph.D. Candidate, Computer Science

Second Year ARCS Scholar



Tracy's primary research areas are on-body sensing, wearable computing and machine learning. Currently, she is researching the use of children with autism and other developmental delays. She is a Google Anita Borg Memorial Scholar for the year 2006-07. Tracy is also an instructor for Kennesaw State University's CyberTech II program, an introductory computer science course aimed at involving underrepresented students in technology oriented fields. Outside of the lab, she is an active member of

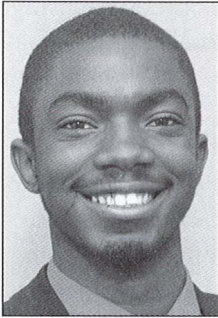
the Women @ CC organization which helps support women in computer science at Georgia Tech and served as its co-president for the 2006-07 academic year. She has a black belt in Shaolin Kung Fu and was both president and goalie for the GaTech Women's Lacrosse Club.

Morehouse College

Osemelu Aburime

Georgia Pacific Scholarship

**Junior, Biology Major
First Year ARCS Scholar**

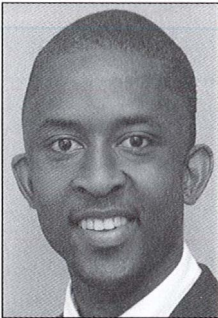


Ose Aburime is a Junior biology student from Port Harcourt, Nigeria. He has been an MBRS-RISE scholar since his freshman year and is also a member of the Health Career Society. While at Morehouse, he researches the regulated pathway of dynein inner arm assembly in the axoneme by using *Chlamydomonas reinhardtii* as a model system. His postgraduate plans include pursuing an M.D./Ph.D. in the innovative field of cell or molecular biology.

Kadir Carruthers

Herz Scholarship

**Senior, Biology Major
First Year ARCS Scholar**



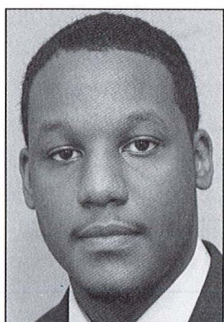
Kadir is from Sebring, Florida. He is an active member of the Alpha Epsilon Delta pre-health professional honors society and the Health Careers Society. For the past two summers, Kadir has performed research on the mapping of the mutant enzyme superoxide dismutase 1 (SOD1) in the nematode *C. elegans*. Also, he has investigated the pathway of protein aggregate degradation in a suppressor strain of SOD1. Kadir's current postgraduate plans are to attend medical school and either pursue a Masters Degree in Public Health or become an orthopedic surgeon.

Morehouse College

James Nelson

Rice Scholarship

**Senior, Biology Major
First Year ARCS Scholar**

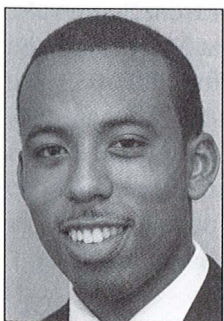


James Nelson is a Presidential Scholar majoring in Biology at Morehouse College. His research interests include developmental cardiology including endothelial cell development and restenosis. He has also done research to develop a novel way to create zebrafish mutants. James has worked on research projects at Morehouse School of Medicine, Emory School of Medicine, as well as Massachusetts General Hospital.

T. Lydel Newsome

Berry/ARCS Century Scholarship

**Junior, Biology Major
First Year ARCS Scholar**



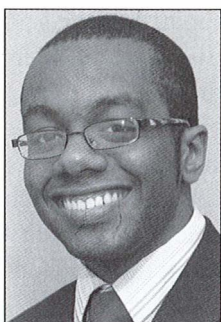
T. is from Silver Spring, Maryland. He is a Junior Biology major where he is also a John H. Hopps Research Scholar. He is a member of Alpha Phi Alpha Fraternity, Inc., as well as on the executive board of the National Association for the Advancement of Colored People, and a member in the Morehouse College Health Careers Society. During the school year he researches on the function and structure of β -islet Glucokinase Regulatory Protein. This past summer he conducted research in a neurosurgery laboratory on reactive oxygen species and their affects during post-ischemic stroke conditions. His postgraduate plans include pursuing an M.D./Ph.D. in the field of biology.

Morehouse College

David Roberts

ARCS Century Scholarship

**Junior, Biology Major
First Year ARCS Scholar**

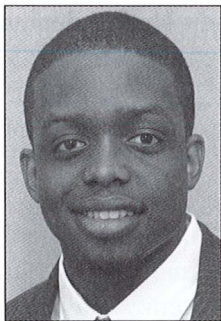


David is a Junior Biology major, raised in Barbados. He is a Hopps Scholar and a winner of the 2008 Frederick Mapps Symposium in the category of oral presentation. Over the past two summers David has conducted research in the fields of kinesiology and genetics, but his primary passion lies in the ecological study of seed beetle toxicity. David's postgraduate plans include obtaining a Ph.D. in ecology and working in academia.

Jonathan Singletary

Siemens Scholarship

**Senior, Biology Major
Second Year ARCS Scholar**



Jonathan is a Junior Biology Major from Sunnyvale, CA. He is a Presidential Scholar at Morehouse and was a MARC/U*STAR scholar for 2007-08. He enjoys using his gifts to serve others. He has studied the trafficking and activity of natural killer cells and the graft-versus-tumor effect in allogeneic bone marrow transplants. He plans to pursue a Ph.D. in immunology and eventually do research in Africa.

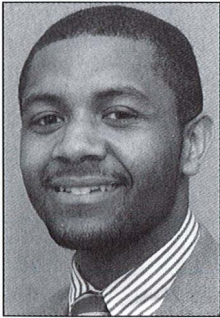
Morehouse College

William D. Shipman III

ARCS Century Scholarship

Junior, Biology Major

First Year ARCS Scholar



William D. Shipman III is from Whiteville, NC and currently enrolled at Morehouse College in Atlanta, GA pursuing a B.S. in Biology with a minor in Spanish. Immediately after entering Morehouse College, Shipman joined the Morehouse College Behavioral Ecology Laboratory and has completed studies involving behavioral and oviposition analysis of bruchid bean beetles. After Morehouse College, Shipman intends to enter an M.D./Ph.D. program and pursue degrees in global health and environmental science.

University of Georgia

Jillian Hurst

Boyd ARCS Light Fellowship

**Ph.D. Candidate, Pharmaceutical and Biomedical Sciences
Second Year ARCS Scholar**



Jillian received her B.S. degree in Chemistry from Mary Washington College where she studied drug binding to growth factors involved in neovascularization. At UGA her research centers around the characterization of Regulator of G-protein Signaling (RGS) proteins as therapeutic modulators of signaling pathways contributing to the progression of ovarian cancer under the guidance of Dr. Shelley Hooks. Jillian has presented her research at national conferences and currently has several papers under review. She has been awarded the pre-doctoral fellowship from the American Foundation for Pharmaceutical Education, was inducted into the Blue Key Honor Society, and was named Outstanding Teaching Assistant and Junior Graduate Student of the Year by the Department of Pharmaceutical and Biomedical Sciences.

Carly Jordan

Burtchaell Fellowship

**Ph.D. Candidate, Cellular Biology
First Year ARCS Scholar**



Carly was born in Houston, Texas. She completed both a B.S. and M.S. in biology at Virginia Tech. She is currently pursuing her Ph.D. in Cellular Biology in the Biomedical and Health Sciences Institute at the University of Georgia. Her research focuses on organelle division in the human parasite, *Toxoplasma gondii*. She is passionate about teaching, and is a member of the UGA Future Faculty Program. After graduation, Carly hopes to find a position teaching biology and mentoring undergraduate researchers.

University of Georgia

Jodell Linder

Gilham/ARCS Century Fellowship

**Ph.D. Candidate, Genetics
Second Year ARCS Scholar**



Jodell received her B.A. degree in Biology at the University of California, Santa Barbara. She is currently pursuing her Ph.D. in Genetics in the Biomedical and Health Sciences Institute at the University of Georgia. At UGA, Jodell is advised by Dr. Daniel Promislow. She is studying the effect of temperature on immune function in insects. Advances in this field are critical for the control of vector born diseases and agricultural pests. Jodell has presented her work at both national and international scientific meetings and published her findings in the *Journal of Evolutionary Biology*, *Proceedings of the Royal Society of London*, and *PNAS*. In her spare time, Jodell enjoys running, juggling, and tie-dyeing.

Meagan McManus

Mauldin Fellowship

**Ph.D. Candidate, Pharmaceutical and Biomedical Sciences
First Year ARCS Scholar**



After receiving her B.S. degree in Biochemistry and Molecular Biology from the University of Georgia, Meagan joined the Ph.D. program in the Department of Pharmaceutical and Biomedical Sciences (PBS). Under the guidance of Dr. James Franklin, Meagan is studying the molecular mechanisms that dictate neurodegenerative disease development. She is currently investigating the role of mitochondrial oxidative stress and dysfunction in the progression of Alzheimer's Disease. She has presented her research findings at several national neuroscience conferences. During her graduate career, Meagan has been president of the American Association of Pharmaceutical Sciences at UGA, and has served as the PBS Graduate Student Association Representative, in addition to several other departmental committees. Besides research, she enjoys spending time with family and friends, gardening, and playing tennis.

University of Georgia

Meghan B. Mitchell

Deyo/Liss Fellowship

**Ph.D. Candidate, Clinical Psychology
First Year ARCS Scholar**



Meghan received her B.A. degree in Psychology from Emory University and joined the Ph.D. program in Clinical Psychology at the Biomedical and Health Sciences Institute at the University of Georgia under the direction of Dr. L. Stephen Miller. She earned her M.S. in Psychology at UGA in 2007 for work examining the relationship between executive functioning and daily functioning in older adults. This project yielded two peer-reviewed publications in neuropsychology journals. Her current project involves early detection of cognitive decline in older adults by examining the ability of two immunoglobulins (IgGs) circulating in the bloodstream (anti-A β and anti-RAGE) to predict disease status in older adults with normal cognitive functioning, Mild Cognitive Impairment, and probable Alzheimer's disease. Her postgraduate plans include pursuing a postdoctoral fellowship in clinical neuropsychology and an academic career in geriatric neuropsychology.

Dawn Penn

Sartain Lanier Fellowship

**Ph.D. Candidate, Family and Consumer Sciences
Third Year ARCS Scholar**



Dawn received her B.S. degree in Nutrition from Penn State University in 2000 and completed her Dietetic Internship at Iowa State University in 2001. She then continued her academic career at the University of Georgia to obtain her M.S. degree in Foods and Nutrition in 2003. She briefly worked as a research technician at the University of Georgia before accepting a position as a clinical research assistant/dietitian at the VA hospital/Duke University in order to gain clinical experience in the field of nutrition and obesity. In June 2005 she returned to the University of Georgia at the Biomedical and Health Sciences Institute to pursue her doctoral degree in Foods and Nutrition. Under the direction of Dr. Mary Ann Johnson, her current research focuses on characterizing the relationship of overweight and obesity with chronic conditions, physical activity, physical function, and food insecurity in order to better target nutrition and healthcare services to the growing population of obese older adults. Dawn has presented obesity-related research at four national conferences and has published two papers in the American Journal of Physiology-Regulatory, Integrative and Comparative Physiology as well as co-authoring a book chapter. In her spare time Dawn enjoys cycling, running, and spending time with her friends, family, and dog.

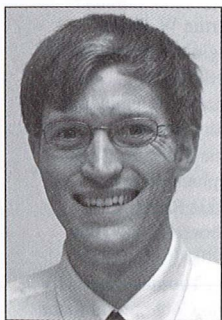
University of Georgia

Todd Smith

ARCS Century Fellowship

Ph.D. Candidate, Microbiology

First Year ARCS Scholar



Todd received a B.S. with Honors and Distinction from Ohio State University. Now at UGA in the Biomedical and Health Sciences Institute, his research focuses on flagellar gene regulation in the human-gastric pathogen *Helicobacter pylori* under the guidance of Dr. Timothy Hoover. He has presented his work at international conferences and published in the journal *Proteomics*. Todd was recently awarded a Dissertation Completion Award from the UGA Graduate School and plans to pursue a post-doctoral fellowship at the CDC in Atlanta. In his free-time Todd enjoys playing soccer, traveling and outdoor activities.

ARCS Atlanta Chapter Membership

Madeline R. Adams
 Mary L. Adams*
 Helen M. Aderhold
 Jane Woods Alexander
 Sharon Ansley
 Kathy B. Ashe
 Lisa Herron Bankoff
 Mollie Winston Barrow
 Jan K. Bennett
 Jeanne L. Berry
 Kathleen Berry
 Paula L. Bevington
 Mary Alice Blane
 Susan McCallum Bledsoe†
 Sally C. Boice
 Anne M. Boyd
 Berney M. Bridges
 Regina S. Bridges
 Alice C. Brown
 Camille Buice†
 Nancy Chambers
 Eileen H. Christman
 Gracia M. Conn
 Margaret P. Cooley
 Lynn M. Cornett
 Ada Lee Correll
 Ann D. Cousins
 Susie Deyo
 Constance V. Dimling
 Jane F. Dolinger
 Marcia G. Donnell
 Patsy Drummond
 Anne Deeley Easterly
 Norma T. Edenfield
 Margaret O'Gara Eskew†
 Carla D. Fackler
 Betty C. Fezor
 Marie Brumley Foster
 Cheryl G. Franklin*
 Michelle Gandy
 Kristen Matzinger Gibbs†
 Caroline M. Gilham
 Martha B. Gillin
 Sally B. Gladden
 Shearon Glover
 Joan S. Goodhew
 Elsie L. Gould
 Frances B. Graves
 Kathryn H. Graves

Joanne C. Gross
 Louise Staton Gunn
 Betsy G. Hansen
 Laura Jones Hardman
 Katherine R. Harman
 Lillo W. Harris
 Aileen P. Hatcher
 Kitty P. Hawks
 Joan Heazel
 Susan J. Higley
 Ann P. Hill
 Sally N. Hinkle
 Jane L. Huffard
 Trudy Huger
 Kimberley Ichter
 Mary Ellen Imlay
 Helen M. Jancik
 Pamela Short Jenkins
 Sally C. Jobe
 Trina L. Johns
 Corazon Johnson
 Cecile M. Jones
 Ingrid Saunders Jones
 Randy Jones
 Anita K. Kern
 Ann E. Klamon
 Margaret Kresge
 Lynne C. Land
 Elizabeth Mori Lauer
 Patricia S. Leake
 Liz Levine
 Deborah Liss
 Betts C. Love
 Gay Love
 Sherry B. Lundeen
 Catherine C. Maier
 Elizabeth Martin
 Rhonda J. Martin
 Shirley A. Massey
 Linda T. Mauldin
 Susan McGonigle
 Linda Kay McGowan†
 Leslie D. McLeod
 Joanne T. Michaels
 Harriet Higgins Miller
 Catherine Millichap
 Susan J. Missbach
 Sue L. Mobley
 Anne H. Morgan

Betty N. Mori
 Brenda B. Moseley
 Mary Louise Napier
 Michelle Nordin
 Kay M. O'Connor
 Mary B. O'Connor*
 Martha W. Peake
 Virginia P. Plummer
 Teed M. Poe
 Sharon S. Quaintance
 Kathy Ranier
 Nancy Sineath Rank
 Stephanie Reeves
 Vickie Riedel
 Deborah C. Robbins
 Phyllis E. Rodbell
 Jean Thomas Russ
 Lynn Cochran Schroder
 Judy Highness Schmidt†
 Penny Paterson Seawell†
 Anne Morse Shearer
 Deborah J. Shelton
 Elizabeth M. Spiegel
 Beverly L. Stacy
 Patricia H. Stephenson
 Lee G. Suddath
 Frances Swensson
 Carol Teem
 Babette J. Tipping
 Elizabeth Troy
 Pat Tuff
 Debbie K. Wagner*
 Margaret S. Wasson
 Brooke T. Weinmann
 Kay C. Weiss
 Kristin D. Whatley
 Clare G. Whitfield
 Susan W. Wieland
 Barbara S. Williams
 Jane J. Wilson
 Christian Eiler Wojcik†
 Marguerite York

* Honorary Members

† New Members

ARCS® Foundation Atlanta Chapter

Past Presidents

Mary O'Connor, 1992-1994
Founder, Atlanta Chapter

Patsy Drummond, 1994-1995

Trudy Huger, 1995-1996

Frannie Graves, 1996-1997

Pat Leake, 1997-1998

Betsy Hansen, 1998-1999

Deborah Liss, 1999-2000

Sally Hinkle, 2000-2002

Janie Wilson, 2002-2004

Teed M. Poe, 2004-2006

Jan K. Bennett, 2006-2008

ARCS® Foundation, Inc. Atlanta Chapter

Board of Directors

Officers

President	Sherry Lundeen
Vice President for Administration	Lisa Bankoff
Vice President for Communications	Barbara Williams
Vice President for Education	Liz Troy
Vice President for Funds Development	Debbie Shelton
Vice President for Membership	Susie Deyo
Vice President for University Relations	Deede Stephenson
Vice President of Finance/Treasurer	Kay Weiss
Recording Secretary	Lynn Cornett
Parliamentarian	Eileen Christman

Committee Chairs and Co-Chairs

ARCS Scholars Chair	Peg Cooley
Alumni Scholars Chair	Mary Ellen Imlay
Assistant Treasurer	Jeanne Berry
Member Relations Chair	Elizabeth Martin
Nominations Chair	Jan Bennett
Public Relations Chair	Joanne Gross
Special Events Co-Chairs	Sally Boice
	Susan Higley
2010 Retreat Co-Chairs	Shearon Glover
	Betty Mori
	Liz Mori Lauer
2008 Scholars Luncheon Co-Chairs	Gracia Conn
	Helen Jancik
2009 Scholars Luncheon Chair-Elect	Cathey Millichap
Database Chair	Carol Teem
Directory Chair	Liz Mori Lauer
Historian	Reg Bridges
Newsletter Editor	Jane Dolinger
Newsletter Co-Publishers	Pat Leake
	Joan Heazel
Website Chair	Sharon Quaintance
Administrative Assistant to the President	Kristin Whatley

Scholarship Awards Luncheon Committee

Co-Chairs

Gracia Conn & Helen Jancik

Chair-Elect

Cathey Millichap

Ambassadors

Elizabeth Martin, Chair
Jane Dolinger, Kitty Hawks,
Joan Heazel, Pam Jenkins,
Corrie Johnson, Linda Mauldin,
Leslie McLeod, Ginny Plummer,
Teed Poe, Kathy Ranier, Vicki Riedel,
Pat Tuff, Margaret Wasson,
Marguerite York

Registration & Nametags

Betts Love, Chair
Marie Foster, Susan McGonigle,
Brooke Weinmann, Susie Deyo

Scholar Photography

Lynn Cornett

Program

Frances Swensson

Public Relations

Joanne Chesler Gross

Reservations

Cathey Millichap

Scholar Relations

Peg Cooley

University Relations

Deede Stephenson

Funds Development

Debbie Shelton, Chair
Jan Bennett, Mary Alice Blane,
Shearon Glover, Joanne Chesler Gross,
Vicki Riedel, Frances Swensson

In Great Appreciation

The Board of Directors of the Atlanta Chapter of Achievement Awards for College Scientists extends special appreciation to the following individuals whose time and talents contributed to the success of our annual celebration.

Jim Fitts Photography

The Fresh Market- Buckhead and North Buckhead Stores

Bill Liss

Marguerite Peele Fine Stationery

The Ritz-Carlton, Atlanta

David Caine, Meetings & Special Events

Our Partnership Schools

Emory University, President James W. Wagner
Georgia Institute of Technology, Interim President Gary B. Schuster
Morehouse College, President Robert M. Franklin
University of Georgia, President Michael F. Adams

ARCS Scholarship Awards Luncheon Committee and Membership