



ARCS

ADVANCING
SCIENCE
IN AMERICA®



THE ANNUAL SCHOLAR AWARDS

LUNCHEON

2012



**ACHIEVEMENT REWARDS
FOR COLLEGE SCIENTISTS FOUNDATION, INC.**

**ATLANTA CHAPTER
SCHOLAR AWARDS LUNCHEON
2012**

ARCS® FOUNDATION MISSION STATEMENT

ARCS Foundation advances science and technology in the United States by providing financial awards to academically outstanding U.S. citizens studying to complete degrees in science, engineering and medical research.

arcsfoundation.org

*ARCS® Foundation Advancing Science in America is
registered in the U.S. Patent & Trademark Office.*

From the President

It is with pleasure that I welcome you to the 21st annual ARCS Foundation Atlanta Scholar Awards Luncheon. We are here to celebrate the achievements of 40 young women and men who are some of our country's future scientists.

Our desire is to support scholars who spend many years preparing for their careers in science. Science affects us every day of our lives and we are proud to support young scientists who will improve and expand such fields as public health, medicine, the environment, industry, communications, computer technology and engineering.

As we celebrate our 20 year history, ARCS Foundation Atlanta is proud that we have grown from awarding 3 scholars a total of \$15,000 to awarding 40 scholars a total of \$285,000. It is you our members, corporate donors, foundations and friends that have made this possible. Thank you. Since 1992, ARCS Foundation Atlanta will have awarded a cumulative total of more than \$2.7 million to scholars at Emory University, Georgia Institute of Technology, the University of Georgia and Morehouse College.

The Atlanta Chapter has grown from 16 founding members and 20 charter members in 1992 to the current 146 active and associate members. How proud they must be of our growth and accomplishments.

A special thanks is due the accounting firm Habif, Arogeti & Wynne, LLP, who have generously underwritten today's luncheon. Also we thank Frances Swensson and her committee for making today's Scholar Awards Luncheon a memorable celebration.

Gracia Conn

*President, ARCS Foundation Atlanta Chapter
November 14, 2012*

**ACHIEVEMENT REWARDS FOR COLLEGE
SCIENTISTS FOUNDATION, INC.**

**ATLANTA CHAPTER
2012
SCHOLAR AWARDS LUNCHEON
THE RITZ-CARLTON, ATLANTA**

PROGRAM

Welcome

Gracia Conn, President
ARCS Foundation Atlanta Chapter

Invocation

The Rev'd Geoffrey M. St.J. Hoare
All Saints' Episcopal Church, Atlanta, Georgia

LUNCHEON

Introduction of Keynote Speaker

Gracia Conn

Keynote Speaker

Dr. Daniel L. Barrow

*MBNA/Bowman Professor and Chairman,
Department of Neurosurgery
Chief of Neurosurgery Service at Emory University Hospital
Director, Emory MBNA Stroke Center*

Moderator

Bill Liss

Financial, Consumer and Legal Editor, WXIA-TV

Closing Remarks

Gracia Conn

ARCS® FOUNDATION HISTORY AND ACHIEVEMENTS

ARCS Foundation, Inc. is a national organization dedicated to supporting the best and brightest U.S. graduate and undergraduate scholars by providing financial awards in science, engineering and medical research.

ARCS Foundation was formed in 1958 in Los Angeles in response to Sputnik and the perceived lack of U.S. supremacy in the technology race. Since then, ARCS Foundation has provided more than 14,000 scholar awards totaling nearly \$83 million at 53 universities, and has grown to more than 1,600 members in 17 Chapters across the United States. More than \$4.1 million was awarded in academic year 2011-2012.

Much has happened in the years since ARCS Foundation was established, but some things never change:

- 100 percent of contributions go directly to fund scholars.
- Recipient schools are qualified through rigorous eligibility requirements.
- Schools select scholars based on academic achievement without regard for race, creed or gender.
- Scholars are U.S. citizens and students of high achievement in the basic sciences.
- ARCS Foundation scholar awards funds are raised and distributed locally.
- ARCS Foundation is an all-women volunteer organization.

The following observation from Dr. Richard A. DeMillo, Distinguished Professor and Director of the Center for 21st Century Universities at Georgia Institute of Technology, truly articulates the vision and the achievements of this unique and important organization:

ARCS Foundation has from its inception been dedicated to the renewal of the science-based workforce. Its success has been stunning. [...] If all of the ARCS Scholars gathered in one place, they would be in the top rank of world universities, a remarkable achievement for a small group of women whose goal was to help American scientists compete with Sputnik.



"According to the Global Innovation Index, in 2012 the U.S. dropped to the tenth most innovative country from ranking just one year earlier as the seventh most innovative country. And as we all know, innovation is linked to skills and abilities in science, technology and math, combined with a dose of creativity. The work that ARCS Foundation does, and the reason for **Habif, Arogeti & Wynne, LLP's** ongoing support, can directly impact that statistic and get it moving in a different direction. Now more than at any other time in our history, higher education in sciences and technology is critical. We know because we live it every day, as we guide and work with many of the most recognizable brands in the technology industry in the Southeast who are always looking for the right talent. Keep up the good work ARCS Foundation."

- Jana Bledsoe, CPA
Partner

ARCS® FOUNDATION, INC. CHAPTERS

Atlanta, Georgia
Chicago, Illinois
Denver, Colorado
Honolulu, Hawaii
Los Angeles, California
Lubbock, Texas
Metro Washington, D.C.
Minnesota

Northern California
Orange County, California
Phoenix, Arizona
Pittsburgh, Pennsylvania
Portland, Oregon
San Diego, California
Seattle, Washington
Tampa Bay, Florida
Utah

IN APPRECIATION

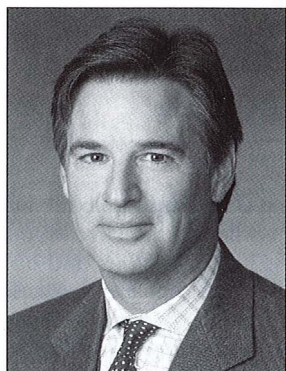
The Board of Directors of the Atlanta Chapter of ARCS Foundation extends special appreciation to the following whose time and talents contributed to the success of our annual celebration.

Jim Fitts Photography
The Fresh Market
Bill Liss, Moderator
Marguerite Peele Fine Stationery
The Ritz-Carlton, Atlanta

Mona Austin, Meetings & Special Events Manager
Kurt Schwan, Director of Catering Sales

Our Partnership Schools

Emory University, James W. Wagner, President
Georgia Institute of Technology, G.P. "Bud" Peterson, President
Morehouse College, Robert M. Franklin, President
University of Georgia, Michael F. Adams, President



Daniel L. Barrow, M.D. Emory University

Daniel Louis Barrow graduated magna cum laude from Westminster College and received his M.D. degree from Southern Illinois University School of Medicine. His general surgery internship and neurosurgical residency were at Emory University and neurology training at Massachusetts General Hospital. He completed a fellowship in cerebrovascular surgery at the Mayo Clinic

in Rochester, MN and additional training at the Barrow Neurological Institute in Phoenix. He is the MCNA/Bowman Professor and Chairman of the Department of Neurosurgery and Director of the Emory Stroke Center at Emory University School of Medicine.

Dr. Barrow, author of more than 250 scientific articles and chapters in medical textbooks, has also authored or edited fourteen monographs, including a major textbook, *The Practice of Neurosurgery*. He has been a visiting professor at major universities throughout North America, Europe, Africa and Asia. His research interests have focused on cerebrovascular disease and stroke. Dr. Barrow's many awards include induction into the honorary medical society, Alpha Omega Alpha. He was the 2010 Honored Guest of the Congress of Neurological Surgeons, and in 1997 received the Distinguished Alumnus Award from Southern Illinois University School of Medicine, and in 1998 received the Alumni Achievement Award from Westminster College.

Active in organized neurosurgery, and holding a variety of leadership and editorial positions, he was on the Executive Committee of the CNS from 1989 to 2001, serving as Scientific Program Committee chairman (1991), Annual Meeting Committee chairman (1992), Secretary (1992-1995), and President (1999-2000). He was President of the Georgia Neurosurgical Society and member of the AANS/CNS Washington Committee. Dr. Barrow has been on the editorial boards of *Clinical Neurosurgery*, *Neurosurgery*, *Neurosurgical Consultations*, *Neurologia Medico Chirugica*, *The Journal of the Korean Neurosurgical Society*; has co-edited *Contemporary Neurosurgery* (1985-1995); edited *Perspectives in Neurological Surgery* (1989-1992); and chaired the AANS Publications Committee. He has been a Director of the American Board of Neurological Surgery and served as Secretary and Chairman of the Board. He is past Vice President and currently Treasurer of the American Academy of Neurological Surgeons.

MONARCS®

We are proud to recognize the following donors who have contributed to the Atlanta Chapter of ARCS Foundation throughout our brief history.

Donors who have given cumulative gifts of \$100,000 or more:
ARCS Foundation Atlanta Membership
Joachim Herz Stiftung

Donors who have given cumulative gifts of \$75,000 or more:
Marcia and John Donnell
Frannie and Bill Graves
Betsy and Harald Hansen
Siemens Industry, Inc.
The Zeist Foundation, Inc.

Donors who have given cumulative gifts of \$50,000 or more:
Madeline and Howell E. Adams, Jr.
Joseph G. and Inez Crawford Burtchae Foundation, Inc.
Cooley Family Foundation
Patsy and Jere Drummond
Georgia-Pacific Foundation
The Imlay Foundation, Inc.
Linda T. Mauldin
The Sartain Lanier Family Foundation, Inc.

Donors who have given cumulative gifts of \$25,000 or more:
Harry and Caroline Gilham Foundation
Lou and Tom Glenn
Georgia Gulf Corporation
Sally and Warren Jobe
James R. Kuse Foundation
Sherry and John Lundeen
Harriett and Sandy Miller
Charles & Catherine B. Rice Foundation
Synovus
Dr. and Mrs. Martin Teem
Turner Enterprises, Inc.
UPS Foundation
Kay and Buddy Weiss

2012 SCHOLAR AWARD DONORS

Galileo Circle

\$7500 and above

Madeline and Howell Adams, Jr.
ARCS Foundation Atlanta Membership
Joseph G. and Inez Crawford Burtchaell Foundation
Cooley Family Foundation
Sylvia and Bruce Dick
Marcia and John Donnell
Lou and Tom Glenn
In Memory of Betsy Hansen
Joachim Herz Stiftung
Sally and Warren Jobe
Libby and Gary Jones
Printpack Inc. and The Gay and Erskine Love Foundation
Linda T. Mauldin
Siemens Industry, Inc.
Turner Enterprises, Inc.
UPS Foundation

Einstein Circle

\$5000 - \$7499

Patsy and Jere Drummond
Graves Foundation
King & Spalding
The Sartain Lanier Family Foundation, Inc.
Carol and Bob Meier
The Ritz-Carlton, Atlanta
The Zeist Foundation, Inc.

Madame Curie Circle

\$2500 - \$4999

Kathy and Dennis Berry
Ada Lee Correll
Anne Easterly
Harry and Caroline Gilham Foundation
Cheryl Dabney Johnson
Deborah and William Liss
Brenda and Charles Moseley
Frances and Kurt Swensson

Century Circle

\$1000 - \$2499

Jane Woods Alexander
Yetty and Charlie Arp
Mollie Winston Barrow
Anne and David Boyd
Camille Buice
Sara Jean Burke
Nancy and Richard Chambers
Susie and Bill Deyo
Shearon and Taylor Glover
Joan and Bill Goodhew
Joanne and Alex Gross
Louise Gunn
Mary Alice Isele
Cecy Jones
Ann and Larry Klamon
Pat and Nolan Leake
Sherry and John Lundeen
Sally and Allen McDaniel
Linda Kay and John McGowan
Leslie McLeod
The Martha and Wilton Looney Foundation
Ronnie Martin
Joanie Michaels
Teed Poe
Patty and Doug Reid
Phyllis Rodbell
Debbie and Charlie Shelton
Mary Rose Taylor
Liz and Mike Troy

Friends of ARCS Foundation

Jan and Gus Bennett	Angela McGowan
Susan Bledsoe	Betty and Jean Mori
Sally Boice	Michelle Nordin
Jenny Cannon	Mary O'Connor
Gracia Conn	Jay Rosenberger
Haidee Courson	Sharon Quaintance
Connie Dotzenrod	Brooke and Winston Weinmann
Kathryn Graves	Clare Whitfield
Susan and John Higley	Barbara Williams

ARCS® FOUNDATION, INC. ATLANTA CHAPTER PAST PRESIDENTS

Mary O'Connor, 1992-1994
Founder, Atlanta Chapter

Patsy Drummond, 1994-1995

Trudy Huger, 1995-1996

Frannie Graves, 1996-1997

Pat Leake, 1997-1998

Betsy Hansen, 1998-1999

Deborah Liss, 1999-2000

Sally Hinkle, 2000-2002

Janie Wilson, 2002-2004

Teed M. Poe, 2004-2006

Jan K. Bennett, 2006-2008

Sherry Lundeen, 2008-2010

Kay Weiss, 2010-2012

ATLANTA CHAPTER MEMBERS SERVING ON THE ARCS FOUNDATION NATIONAL BOARD

Nancy Chambers
Gracia Conn
Debbie Liss
Sherry Lundeen
Ronnie Martin
Mary Snitch
Kay Weiss
Janie Wilson



EMORY UNIVERSITY

JAMES W. WAGNER, PRESIDENT



If the United States is to continue to lead the world in science and technology, it must attract, train and employ its best and brightest students to become the next generation of scientist/scholars. Sometimes the country tends to lose sight of this important mission. ARCS Foundation remains one of the true and consistent friends of all fields of science, supporting and encouraging students to pursue research and teaching careers. Very few institutions address this need, so ARCS Foundation is an important, much-needed champion of science education.



DONALD STEIN, Ph.D.

*Asa G. Candler Professor of Emergency Medicine
Director, Brain Research Laboratory
Emory School of Medicine*

EMORY UNIVERSITY

Debra Cooper

Jobe Award

Ph.D. Candidate, Neuroscience

Third Year ARCS Scholar



In 2006, Debra received her Bachelor of Science from Duke University, majoring in psychology and minoring in biology and chemistry. Combining these concentrations, she developed an interest in behavioral neuropharmacology. In particular, she focuses on studying the effects of drugs of abuse and relevant treatments. She was named the first winner of the Dolores Shockley Best Abstract competition at the 2010 Experimental Biology meeting, has received numerous travel grants to attend scientific meetings, and is currently on the NIDA sponsored Drug Abuse Training Grant. She has co-first authored a paper from her dissertation research at Emory University, as well as co-authored three additional peer reviewed papers. Debra has also helped mentor undergraduates and rotating graduate students working in the lab. In her spare time, Debra enjoys reading, listening to music, and watching and playing sports.

Shannon Elf

Printpack/Love Award

Ph.D. Candidate, Molecular and Systems Pharmacology

Third Year ARCS Scholar



Shannon earned her B.A. in Biology and Music from Bowdoin College in Brunswick, Maine. As an undergraduate, Shannon was awarded an HMMI summer research fellowship, during which time she developed a profound interest in the molecular basis of leukemia. Following graduation, Shannon went on to work in renowned hematological oncology labs at Harvard Medical School and Memorial Sloan-Kettering Cancer Center, where she co-authored numerous publications, including those in *Nature Genetics*, *Cell Stem Cell*, and *MCB*. Since coming to Emory, Shannon has continued her work on leukemia, and has co-authored publications in *JCI*, *Science Signaling*, and *MCB*, in addition to a recent first author publication in *Blood* and second author publication in *Cancer Cell*. She is currently working on developing novel therapeutic strategies to treat hematological malignancies by targeting metabolic enzymes that are over-expressed or over-activated in cancer cells. She was named an Emory Division Scholar in 2008, awarded the Pharmacological Sciences Training Grant in 2009 and 2010, and named an ARCS Foundation Scholar in 2010. She is an avid reader, baker, and singer.

EMORY UNIVERSITY

Katherine Gass

ARCS Membership Award

*Ph.D. Candidate, Epidemiology
Third Year ARCS Scholar*



Katherine Gass was born and raised in Bellingham, WA. After completing her dual degree in Mathematics and Theatre at Oberlin College, she joined the Peace Corps. Katherine spent two years serving as a community health volunteer in rural Peru where she met great people, ate impressive amounts of ceviche, and found her calling in public health. Upon her return to the States, Katherine spent a couple of years in DC working for a nonprofit involved in micronutrient fortification overseas. She then moved to Atlanta where she recently completed her M.P.H. in Global Epidemiology, focusing on the elimination of lymphatic filariasis.

Katherine is now happily enrolled in the doctoral degree program in epidemiology at The Rollins School of Public Health. In her "spare" time she also does consulting for the Task Force for Global Health to help with the elimination of lymphatic filariasis. She is using her ARCS Foundation Scholar Award to study the effects of ambient air pollution exposure on respiratory and cardiovascular disease in Atlanta.

Erin Keebaugh

ARCS Century Award

*Ph.D. Candidate, Population Biology, Ecology and Evolution
Second Year ARCS Scholar*



While earning a B.S. in Genetics at the University of Georgia, Erin worked in a plant genome mapping laboratory and participated in ecological field research projects in Costa Rica. After graduating, Erin worked as a lab technician and co-authored two publications. Erin's research background in genetics and ecology helped define her main research interest: how species interactions shape molecular evolution. She is now a graduate student at Emory University studying the molecular biology and evolution of fruit fly immunity genes, and has presented her work at a number of scientific conferences and published a first author and

co-author paper. Her career goal is to become a professor. In her free time, Erin enjoys spending time in nature.

EMORY UNIVERSITY

Joachim Herz Stiftung/ Global Impact Award

Matthew Magee

*Ph.D. Candidate, Epidemiology
First Year ARCS Scholar*



Matthew Magee studied sociology and Spanish at Grinnell College, graduating in 2001. Following his undergraduate study, Matthew received a Thomas J. Watson Fellowship to research hepatitis C virus in Italy, India and Australia. In 2002 he returned to Chicago where he earned his M.P.H. in epidemiology from the University of Illinois. While there, he was awarded a David Boren Fellowship to research HIV and tuberculosis among injection drug users in Delhi, India. Matthew worked for the Asian Health Coalition of Illinois for three years as Senior Program Manager prior to beginning his Ph.D. work at Emory. His dissertation investigates the impact of diabetes mellitus on tuberculosis treatment. As a hobby, Matthew enjoys cooking Mexican cuisine.

Danny Mancheno

Glenn Award

*Ph.D. Candidate, Chemistry
Second Year ARCS Scholar*



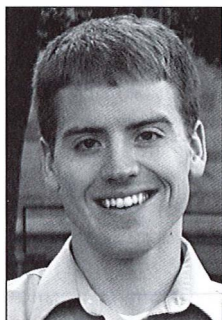
Danny Mancheno received a B.A. degree in chemistry from Queens College (CUNY) in 1998. Following graduation he obtained a position as a process chemist at Merck & Company. During his tenure at Merck, Danny worked on projects that focused on infectious diseases, cholesterol and type 2 diabetes. Additionally, Danny was involved in the development of the manufacturing route for Isentress®, a drug currently used to treat HIV infections. In 2008, Danny started his Ph.D. studies at Emory University under the supervision of Dr. Simon Blakey. His first project on the aminoacyl-oxylation of olefins was published in 2010. His current research involves the total synthesis of Demethoxymyrtidine, a potent chemosensitizer of malaria. Outside of the lab, Danny is an avid soccer player.

EMORY UNIVERSITY

Kevin Ogden

Donnell Award

*Ph.D. Candidate, Molecular and Systems Pharmacology
Third Year ARCS Scholar*

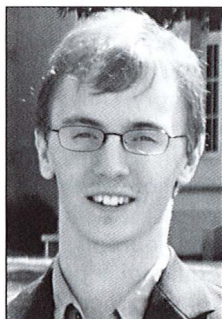


Kevin Ogden graduated in 2007 with a B.S. in Physiology from Michigan State University, where he studied the causes of hypertension and published two papers on the role of serotonin in high blood pressure. Upon entering Emory University, Kevin was awarded a George W. Woodruff Fellowship from the Laney Graduate School to pursue a Ph.D. in Molecular and Systems Pharmacology. His current research focuses on cellular communication in the brain and how disruption of this communication can lead to diseases such as schizophrenia and Alzheimer's disease. With funds from ARCS Foundation, Kevin intends to complete studies exploring how new compounds may be used to treat neurological disorders and to travel to New Orleans to present his research findings at the Society for Neuroscience Annual Meeting. After graduating from Emory, Kevin aspires to continue research on the molecular basis of neurological diseases. When not in lab, Kevin enjoys road bike racing, computer programming, and home brewing.

Tim Sampson

Turner Award

*Ph.D. Candidate, Microbiology and Molecular Genetics
Third Year ARCS Scholar*



Tim received his B.S. in Microbiology in 2008 from the University of Pittsburgh, where he studied viral genetic diversity. Currently, Tim is a Ph.D. student in microbiology in the laboratory of David Weiss. Here, his work focuses on the way that bacteria escape detection by our immune system. Specifically, he is interested in how bacteria regulate immune activating components of their outer surface. Insights from his current work may provide the foundation for future development of antibacterial drugs and vaccines. Outside of the laboratory, Tim enjoys time outdoors with his wife, Maureen. He is an avid bread baker and home cook and has recently become a homebrewer.

EMORY UNIVERSITY

Nikki Sawyer

Correll/ARCS Membership Award

Ph.D. Candidate, Neuroscience

Second Year ARCS Scholar



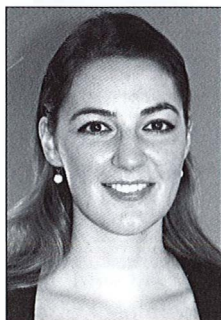
Nikki Sawyer graduated from Clayton State University in 2007 with a B.S. in Biology with a minor in Chemistry. Nikki conducted undergraduate research with Dr. Stephen Burnett studying echolocation of big brown bats and with Dr. Kai McCormack studying the effects of early life stress in rhesus macaques. She is currently in the lab of Dr. Andrew Escayg looking at the relationship between stress and epilepsy in two rodent models of epilepsy. Nikki's research has shown that stress affects the epileptic brain differently from a normal brain, and she is finishing her thesis work by examining the mechanism by which stress triggers seizures in the epileptic brain. Nikki lives with her husband and enjoys reading, gardening, traveling, and nature.

Kristin Wall

ARCS Century Award

Ph.D. Candidate, Epidemiology

Second Year ARCS Scholar



Kristin studied Biomedical Engineering at the University of Texas at Austin where she was active in research of novel microscopy techniques for early detection of breast cancer. After receiving an M.S. in Epidemiology from the University of Texas Houston Health Science Center, she began studying at Emory University where she is currently a Ph.D. candidate in Epidemiology. Her current research interests are in couples' HIV voluntary counseling and testing promotion, scale-up, and integration with other health services. Kristin has published 17 papers in peer-reviewed journals, with 6 first-author manuscripts and an additional 5 papers currently in preparation. Prior to beginning her Ph.D. studies, Kristin worked in the CDC Atlanta Malaria Branch. Aside from her research and teaching responsibilities, she enjoys traveling and studying languages.



G.P. "BUD" PETERSON, PRESIDENT



For more than 50 years ARCS Foundation has been providing scholar awards for the STEM fields. For more than 125 years Georgia Tech has been educating students in the STEM fields. We are very pleased to be partnering with you to be able to provide a stellar education to outstanding and deserving students.



G. P. "BUD" PETERSON, Ph.D.

President, Georgia Institute of Technology

GEORGIA INSTITUTE OF TECHNOLOGY

Candace Brakewood

Drummond Award

*Ph.D. Candidate, Civil Engineering
First Year ARCS Scholar*

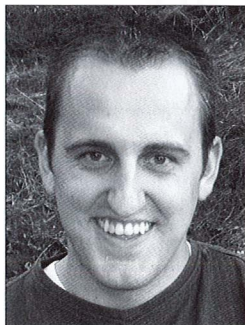


Candace is pursuing her doctorate in Civil Engineering at Georgia Institute of Technology. Her academic interests are in public transportation planning and operations, and her doctoral research focuses on the utilization of new information and communication technologies by public transit riders. She has two Master's degrees from the Massachusetts Institute of Technology: one in Transportation and the second in Technology and Policy. She also has a B.S. in Mechanical Engineering from Johns Hopkins University. Before attending graduate school, Candace worked as a Patent Examiner at the United States Patent and Trademark Office.

Greg Droge

Moseley/ARCSCenturyAward

*Ph.D. Candidate, Electrical Engineering
First Year ARCS Scholar*



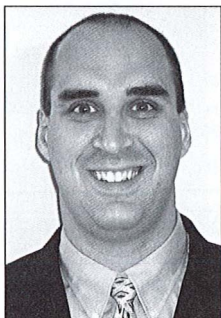
Greg is from Bountiful, Utah and is currently a fourth year Ph.D. student in the department of Electrical Engineering at Georgia Institute of Technology. His research interests include multi-robot coordination and distributed optimization. He graduated Magna Cum Laude with a B.S. from Brigham Young University and received a M.S. Degree from Georgia Tech. He was awarded with a Presidential Fellowship in 2009 and named a SMART scholar in 2011. He has also been involved in promoting science and engineering education through the SLIDER program, implementing an eighth grade science curriculum based on robotics and engineering concepts.

GEORGIA INSTITUTE OF TECHNOLOGY

Nicholas Earnhart

Graves Award

*Ph.D. Candidate, Mechanical Engineering
Second Year ARCS Scholar*



Nick, who is from Hilton, New York, obtained a B.S. in Mechanical Engineering from Purdue University, during which time he completed five Co-Op rotations at GE in Fort Wayne, IN. Post-graduation, he worked as an intern at Rolls Royce in Indianapolis, IN. He began his post-graduate studies at the Georgia Institute of Technology in 2007 with a President's Fellowship. He received an M.S. in Mechanical Engineering in 2009 and is currently a Ph.D. Candidate in the field of Acoustics. His work is focused on developing compact noise control devices for fluid power systems.

Jamie Montague Fischer

UPS Award

*Ph.D. Candidate, Civil Engineering
First Year ARCS Scholar*



Through her doctoral research, Jamie works with state and local government agencies to measure the effects that transportation systems have on the quality of people. After graduation, she hopes to stay in Atlanta and to help improve the transportation system here. She is a committee member and contributing author in the Transportation Research Board, and a recipient of the 2012-2013 Eisenhower Fellowship. In her personal life, Jamie enjoys mentoring a group of 11-14 year old youth in her neighborhood, singing and playing flute, reading and writing poetry and fiction, cooking and spending time with friends and family.

GEORGIA INSTITUTE OF TECHNOLOGY

Stephanie German

Joachim Herz Stiftung/ Global Impact Award

*Ph.D. Candidate, Structural Engineering
Second Year ARCS Scholar*

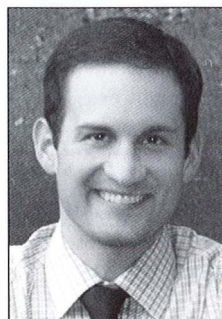


Stephanie is from Houston, Texas. With a B.S. in Architectural Engineering from the University of Texas at Austin and an M.S. in Civil Engineering from Georgia Tech, she is currently pursuing a Ph.D. in Civil Engineering at Georgia Tech. For the last two years, she has done research in the creation of machine vision detection of damage in reinforced concrete frame buildings for post-earthquake structural assessments. She is actively involved in the Earthquake Engineering Research Institute (EERI), where she currently serves as the Treasurer. She has also received honorable mention from the National Science Foundation Graduate Fellowship program.

Warren Dale Gray

Joachim Herz Stiftung Award

*Ph. D. Candidate, Biomedical Engineering
Wallace H. Coulter School of Biomedical Engineering
(a Joint Program between Emory and Georgia Tech)
First Year ARCS Scholar*



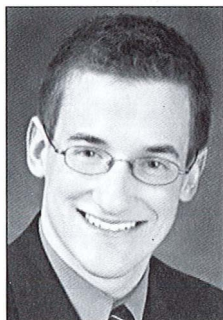
Originally hailing from Oregon City, Oregon, Warren attended Oregon State University, where he graduated Summa Cum Laude with an Honors B.S. in Chemical Engineering. His graduate work in Biomedical Engineering involves developing therapeutic systems for patients who have suffered heart attacks. Warren recently returned from a year abroad in Beijing, China, where he conducted research as a Whitaker International Fellow at Peking University on the design and synthesis of novel nanocarriers for microRNA delivery. Outside the lab, he enjoys training for road races and leading the choir at his local church congregation.

GEORGIA INSTITUTE OF TECHNOLOGY

Zachary Lochner

Hansen Award

*Ph.D. Candidate, Electrical and Computer Engineering
Second Year ARCS Scholar*



Zachary is a native of Buffalo, NY. He received a B.S. degree in Electrical Engineering with minors in Computer Science and Mathematics from the University at Buffalo in 2007, and an M.S. degree in Electrical Engineering with a minor in Materials Science from the Georgia Institute of Technology in 2010. He has been an active member of the Institute of Electrical and Electronics Engineers, and has served as student Chapter treasurer and president. He is currently working toward a Ph.D. with research interests focusing on the development of GaN-based semiconductor devices such as heterojunction bipolar transistors and ultraviolet light emitting diodes.

Sarah Miracle

Jones Award

*Ph.D. Candidate, Algorithms, Combinatorics and Optimization
Second Year ARCS Scholar*



In 2003, Sarah graduated from Vanderbilt University with a B.E. in Computer Engineering and Mathematics and an M.S. in Computer Science. She worked as an engineer and a manager at National Instruments in Austin, Texas for five years before returning to academia. In the fall of 2008, she started work on her Ph.D. in Algorithms, Combinatorics and Optimization at the Georgia Institute of Technology. Her advisor is Dr. Dana Randall, and her research interests include randomized algorithms and Markov chains. She is also the recipient of a DOE Office of Science Graduate Fellowship.

GEORGIA INSTITUTE OF TECHNOLOGY

Nathan Mlot

Liss/ARCS Membership Award

*Ph.D. Candidate, Mechanical Engineering
First Year ARCS Scholar*



Nathan is from Raleigh, North Carolina, where he received his B.S. in Mechanical Engineering at North Carolina State University. He then moved to Atlanta to attend Georgia Tech, where he is currently pursuing a Ph.D. His current research pursuits lie in the area of biomechanics. Specifically, he is studying the swarm behavior of fire ants for the purpose of understanding the role of the individual in cooperative multi-agent systems. The study has applications in modular robotics. His recent publication has been featured on National Public Radio's program, "Science Fridays" and on National Geographic's web site. Nathan enjoys using his free time outdoors hiking or biking with his wife, Samantha.

Temi Olubanjo

ARCS Membership Award

*Ph.D. Candidate, Electrical Engineering
First Year ARCS Scholar*



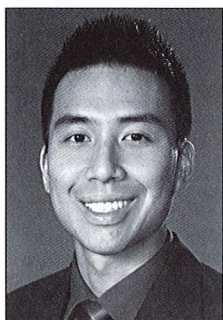
Temi Olubanjo, originally from Lagos, Nigeria, relocated to Texas in 2004. She attained her B.S. in Electrical Engineering from the University of Texas-Austin in December, 2010. She next worked as an Instrumentation Engineer for Dow Chemical Company in Houston. In January 2012, Temi started her Ph.D. program in Electrical Engineering at Georgia Institute of Technology where she has maintained a 4.0 G.P.A. Her research interest is in System Design for Communication and Biomedical Applications and her research project is on the development of a Pharmaceutical Compliance System. Temi's free-time pursuits include dancing and spending time with family.

GEORGIA INSTITUTE OF TECHNOLOGY

Eliot Quon

Siemens Award

*Ph.D. Candidate, Aerospace Engineering
Third Year ARCS Scholar*



Eliot is from San Francisco, California. He received his B.S. in Mechanical Engineering from Cornell University and is currently working toward a Ph.D. in Aerospace Engineering at Georgia Tech. He is the current Atlanta student chapter president of the American Helicopter Society and a recipient of the 2010 and 2011 Vertical Flight Foundation Scholarships. In the past he has worked at NASA Ames Research Center and Sikorsky Aircraft. He is currently working on improved hybrid modeling techniques and developing higher-order interpolation methods for computational fluid dynamics, with applications in rotorcraft and wind turbines. In his free time Eliot enjoys biking and playing the guitar.

Carol Young

Cooley Award

*Ph.D. Candidate, Robotics Engineering
First Year ARCS Scholar*



Carol Young, of Savannah, Georgia, graduated from Rensselaer Polytechnic Institute with a dual major in Aeronautical Engineering and Mechanical Engineering. She spent a year working at Electric Boat before heading back to school to pursue a Ph.D. in Robotics Engineering at Georgia Institute of Technology. Carol hopes to apply her degree to sea or space exploration, and her current research goals include creating a framework for Autonomous Water Vehicles to interact in a close and safe manner with human swimmers.



MOREHOUSE COLLEGE

ROBERT M. FRANKLIN, PRESIDENT



Almost 10 years ago, I received a scholar award from the Atlanta Chapter of ARCS Foundation that supported an invaluable research experience at Morehouse College. This experience opened my eyes to the numerous possibilities as a scientist and has led me to the savannahs of Kenya to research yellow baboons and to the coast of Maine to study intertidal snails. Ultimately this odyssey that started with an ARCS Foundation Scholar Award has led me back to Georgia, where I am an Assistant Professor in the field of Stem Cell and Regenerative Biology at the University of Georgia. The support I received from ARCS Foundation made a definite and long-lasting impact on my career and desire to be a scientist.



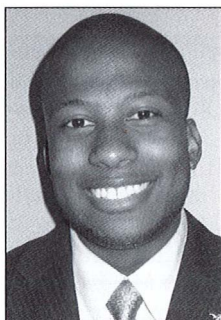
FRANKLIN WEST, Ph.D.
ARCS Foundation Scholar

MOREHOUSE COLLEGE

Roy Llewellyn II

Zeist Award

*Senior, Physics Major
Third Year ARCS Scholar*

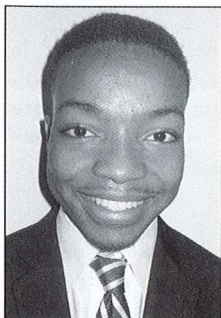


Roy is from Fontana, California and is currently pursuing a B.S. in Physics from Morehouse College. He is a member of the Dr. John H. Hopps Jr. Defense Research Scholars Program, the National Society of Collegiate Scholars, and the Presidential Ambassador Program at Morehouse College. Despite medical adversities which forced him to leave Morehouse for a semester, he was able to return to the campus the following semester and continue his academic achievements. While at Morehouse, he works in the Micro Optics Research and Engineering Lab where he studies Metamaterials. In summer 2010 he conducted research at Georgia Institute of Technology in the Materials Research Science and Engineering Center, studying monolayer Graphene. In summer 2011 he conducted research at Stanford University in the Computational Physics and Engineering Lab. This past summer he conducted research in the Materials Research Science and Engineering Center at the Wright Patterson Air Force Research Lab where he worked with 3D Laser lithography of helical nanostructures. Upon graduation, Roy plans to pursue a Ph.D. in Electrical Engineering.

Joshua Mann

Sartain Lanier Award

*Junior, Applied Physics and Aerospace Engineering Major
Second Year ARCS Scholar*



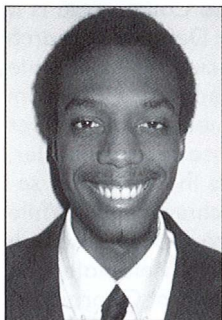
Joshua was raised in Fairfax, Virginia. He is an Applied Physics and Aerospace Engineering major currently serving as the Vice President of the Morehouse College Chapter of the Optical Society of America. He is also a Dr. John H. Hopps, Jr. Defense Research Scholar. This past summer he conducted research in Paris, France at Ecole Polytechnique in the design and development of ultra-intense laser systems. His post-undergraduate plans include graduate level research in aerospace propulsion systems. Joshua also enjoys playing the alto saxophone.

MOREHOUSE COLLEGE

Myles Nicholson

Ritz-Carlton Award

*Senior, Computer Science Major
Second Year ARCS Scholar*



Myles is from Weldon, North Carolina. He is a senior Computer Science major. Myles is a member of the Culturally Relevant Computing Research Laboratory at Morehouse College. He has worked on a user interface for the Earth Systems Grid project and also helped to improve entity visibility in the Parallel Mesh Generation Project at Lawrence Livermore National Laboratory. His post-graduate plans include pursuing a Ph.D. in the field of database systems. Myles enjoys playing chess and programming for side projects in his spare time.

Francisco Nunez

ARCS Membership Award

*Junior, Computer Science Major
First Year ARCS Scholar*



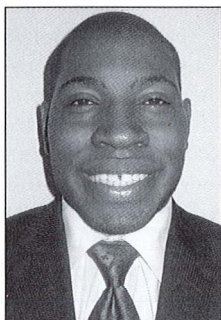
Francisco Nunez is from Temple Hills, Maryland. He is majoring in Computer Science/Computer Engineering with a Mathematics Minor. He is an active member of NSBE, serving as AUC NSBE's Finance Chair. He is a co-founder of Educating Dreamers to Gain Efficacy, an organization chartered at Morehouse College. He is an Oracle Scholar since 2010, a Dr. John H. Hopps, Jr. Defense Research Scholar, a General Motors Scholar for 2011 and a Schwab Scholar for 2011. Last summer he conducted research at Stanford University in the Geophysics Department in Computational Seismology. This research entailed development of software through C++, C, MATLAB and CUDA modeling how elastic solids respond to wave propagation. Summer 2011, he was an application developer and business analyst at Hewitt Packard, where he conducted research on the WebOS platform for the HP Touchpad. His post-graduate plans include pursuing a Ph.D. in psychology or neuroscience. Francisco's other interests include mentoring, reading, basketball, meditating and physical exercise.

MOREHOUSE COLLEGE

Raymond Perkins

Deborah Liss ARCS Light Award

*Senior, Mathematics and Economics Major
Second Year ARCS Scholar*

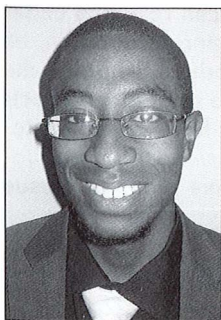


Raymond Perkins is a Mathematics and Economics major from Columbia, South Carolina. He serves as a Presidential Ambassador for Morehouse College. He is also a Jack H. Skirball Leadership Scholar and a Dr. John H. Hopps, Jr. Defense Research Scholar. Two years ago he performed pure mathematics research at Michigan State University. Last year, Raymond performed financial mathematics research at the Mathematical Science Research Institute at the University of California, Berkley. This summer he performed applied mathematics research at the Hong Kong University of Science and Technology. In addition to his research, last year he studied mathematics and Hungarian language in Budapest, Hungary. Raymond was awarded first place for his presentation in Miami, Florida at the National Association of Mathematicians Undergraduate Conference in 2010. His postgraduate plans include pursuing a Ph.D. in Economics. Outside of research, Raymond loves to travel.

Andrew Peterson

King & Spalding Award

*Junior, Physics Major
First Year ARCS Scholar*



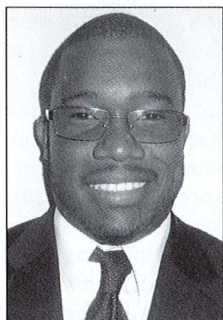
Andrew Peterson is originally from Bastrop, Texas and is currently a junior physics major at Morehouse College. He is currently president of the Morehouse chapter of the Society of Physics Students (SPS) and is also the associate zone counselor for the SPS Zone 6, which includes Georgia, Florida and Puerto Rico. During the summer of 2011, he worked in the EUV Laser Research Laboratory at Colorado State University developing pulse counters for the laser amplifiers of a soft x-ray system. He plans to attend graduate school to study the quantum mechanics of black holes and quantum gravity.

MOREHOUSE COLLEGE

Anthony Scruse

Easterly/Johnson Award

*Junior, Chemistry Major
First Year ARCS Scholar*

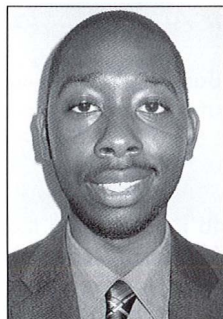


Anthony is from Springfield, Ohio. He is an active member of the AUC Symphony Orchestra, the Morehouse College Academic Team and has performed and toured with the Morehouse College Jazz Ensemble. He is a MARC U*STAR Scholar and a veteran PLTL leader. Anthony's research experiences include a summer REU at Northwestern University with the Physical Sciences Oncology Center, and a summer REU at Brown University with the Leadership Alliance. He currently conducts research in organic chemistry at Morehouse College. Anthony plans to pursue a Ph.D. in organic chemistry with the intention of becoming a chemistry professor.

Lonnie Thomas Sullivan II

ARCS Century Award

*Senior, Biology Major
Second Year ARCS Scholar*



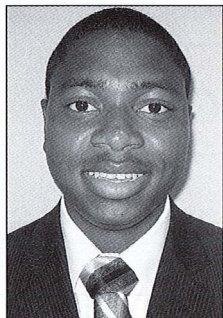
Lonnie is a Biology major from Woodstock, Georgia. During his years at Morehouse College, Lonnie has been actively involved in stem cell research under the guidance of Dr. Alexandra Peister. In addition, he conducted research at Harvard Medical School in the summer of 2012. At Harvard, Lonnie studied the effects that knockout of the FACT complex have on tumor development in *Drosophila melanogaster*. Upon graduation from Morehouse College, Lonnie plans to pursue a medical degree.

MOREHOUSE COLLEGE

Zollie White III

Meier Award

*Senior, Chemistry and Mathematics Major
Third Year ARCS Scholar*



Zollie White III is a Senior Chemistry and Mathematics double major from Tallahassee, Florida. He is currently conducting research in the lab of Dr. Anita Corbett at Emory University, associated with cancer-relevant RNA binding proteins. His research at Morehouse includes structural biology in relation to diabetes as well as physical chemistry research concerning NMR spectroscopy. Zollie has participated in summer research programs at New York University, Vanderbilt University and Northwestern University, in projects in breast cancer, computer modeling in drug development and biophysics, respectively. He is also an NIH MARC U*STAR, as well as a Barry M. Goldwater Scholar this year. Post-graduation, he plans to pursue an M.D./Ph.D. degree in Cancer Biology. Outside of school, he plays soccer, trumpet, and enjoys music, especially jazz.



The University of Georgia®

MICHAEL F. ADAMS, PRESIDENT



The impact of any university research enterprise depends ultimately on the quality of its graduate students. They are the life blood of all academic research efforts, which is why President Adams recently set a goal of enhancing UGA's graduate programs. The ARCS Scholars Program has been invaluable in helping UGA elevate the stature of its life science graduate programs, in particular. The honor it bestows upon those who are selected for the award motivates our students to reach higher, and the award also comes with important practical benefits in the form of discretionary funds that empower our best students. We could not be more grateful to ARCS Foundation for its support.



DAVID LEE, Ph.D.

*Vice President for Research
University of Georgia*

UNIVERSITY OF GEORGIA

Rachelle Arnold

Adams Award

*Ph.D. Candidate, Chemistry
First Year ARCS Scholar*



Rachelle Arnold is a native of Woodburn, Indiana and graduated Summa Cum Laude from the University of Indianapolis in 2009, with a B.S. in Chemistry and Biology. She is currently a doctoral candidate at the University of Georgia in analytical chemistry under the direction of Jason Locklin, specializing in the development of surface-bound molecular bottle-brushes for the study of diffusion and mechanical properties of extracellular barriers in pulmonary disorders. Rachelle currently has 2 first-author publications, a review in *Journal of Materials Chemistry*, and a research article in *Macromolecules*, while also contributing to a book chapter in *Functional Polymers by Post-Polymerization Modification* due out in November and published by Wiley, VCH.

Laura Cuff

Berry/ARCS Century Award

*Ph.D. Candidate, Microbiology
First Year ARCS Scholar*



After receiving a B.A. in Biology from Grinnell College, Laura worked at the University of Iowa for two years studying the scaffolding of mammalian cell adhesion proteins. Following this technician position, she joined the Ph.D. program in the Department of Microbiology at the University of Georgia. In Dr. Ellen Neidle's lab, her research centers on understanding spontaneous gene amplification events in a soil bacterium. Laura has presented her work at international and national conferences in Rome, Italy, New Orleans, Louisiana and at Cold Spring Harbor Laboratories. Additionally, her findings are published in the *Journal of Bacteriology*. When she is not in the lab, Laura enjoys spending time with friends, reading mystery novels, cooking and baking.

UNIVERSITY OF GEORGIA

Sharon K. Keller

**Joachim Herz Stiftung/
Global Impact Award**

*Ph.D. Candidate, Cellular Biology
First Year ARCS Scholar*

After receiving a B.S. degree in Cellular Biology from the University of Georgia, Sharon joined the Ph.D. program in the Department of Cellular Biology under the direction of Dr. Silvia Moreno. She is studying a central enzyme in a signaling pathway known to regulate cellular processes such as metabolism and proliferation in *Trypanosoma brucei*, the pathogenic agent of African trypanosomiasis. She has presented her research at national conferences as well as in the publications, *Antimicrobial Agents & Chemotherapy* and *Advances in Parasitology*. During her career at the University of Georgia, Sharon has been awarded two pre-doctoral fellowships as well as an Outstanding Teaching Assistant award. In addition, she has served as president of the Cellular Biology Graduate Student Association.



Kristin A. Loiselle Gilham/ARCS Membership Award

*Ph.D. Candidate, Psychology
First Year ARCS Scholar*



Kristin received her B.S. degree in Psychology from Drexel University. She is currently a graduate student member of the Pediatric Psychology Lab under the mentorship of Dr. Ron Blount where she investigates factors that affect adherence to medical regimens among child and adolescent solid organ transplant recipients. She has presented her research at many national conferences and has numerous publications in peer-reviewed journals. In the future, Kristin aims to develop and incorporate evidence-based medical adherence interventions in pediatric medical centers. In addition to research involvement, Kristin has served in leadership and mentoring positions with the Psychology Department. In her spare time, Kristin enjoys playing tennis and having game nights with her friends.

UNIVERSITY OF GEORGIA

Cary McGinnis

Mauldin Award

*Ph.D. Candidate, Department of Pharmaceutical
and Biomedical Sciences
First Year ARCS Scholar*



Cary received her B.A. degree in Psychology from Florida State University and her M.S. degree in Chemistry from Georgia State University. At the University of Georgia, her research is guided by Dr. Michael Bartlett and focuses on characterization of small RNAs through development of specific and sensitive analytical methods. These methods are used to study siRNA therapeutics and for miRNA biomarker discovery. Cary has presented her research at several national conferences and has one first-author paper and three co-authored papers and book chapters. She is an active member of the American Association Pharmaceutical Scientists serving on various committees and has received numerous awards to attend their national conferences. Cary serves as a judge for the local and state Science and Engineering Fairs and is active as a mentor and volunteer for the Center for Undergraduate Research Studies at UGA.

Bonney Reed-Knight

Burtchaell Award

*Ph.D. Candidate, Clinical Psychology
Third Year ARCS Scholar*



Bonney is from Habersham County, Georgia, and received her B.S. in Psychology from The University of Georgia in 2007. She is currently pursuing a Ph.D. in Clinical Psychology at the University of Georgia under the supervision of Dr. Ronald L. Blount. In 2010, Bonney earned her M.S. in Psychology for her study of disease, individual, and familial factors associated with medication non-adherence in youth with Inflammatory Bowel Disease (IBD). Bonney's dissertation examined the relationship between behavioral functioning specific to levels of attention and conduct problems and prescription medication adherence in youth with IBD and examined the meditational role of perceived barriers to adherence. Bonney intends to continue pediatric health research in the future, with particular interest in applying psychological research to improve disease outcomes and quality of life in youth with gastrointestinal disorders. This year, Bonney is completing her pre-doctoral residency at The Warren Alpert Medical School at Brown University in Providence, Rhode Island.

UNIVERSITY OF GEORGIA

Julie Rushmore

*Ph.D. Candidate, Veterinary Medicine and Ecology
Third Year ARCS Scholar*



Julie graduated from Duke University in 2006 with a B.S. in Biological Anthropology. After taking a year away from school to conduct field research in Madagascar and learn lab techniques at the University of Georgia, Julie entered UGA's D.V.M./Ph.D. program where she is receiving training in veterinary medicine and disease ecology. Julie is interested in studying the interface of public health, disease ecology, and wildlife conservation. As a 2009-2010 Fulbright Fellow, Julie spent a year studying health and behavior in a wild chimpanzee community in western Uganda. Her research focuses on behavioral and ecological factors that affect disease transmission dynamics in wild great

apes. Julie was recently awarded a Wildlife Health Training Grant from the Morris Animal Foundation, and her research receives support from Conservation International and the US Fish and Wildlife Service among others. After graduating, Julie plans to pursue a job that addresses public health and wildlife conservation issues in Africa.

Natale Sciolino

ARCS Membership Award

*Ph.D. Candidate, Interdisciplinary Neuroscience
First Year ARCS Scholar*



Natale is from the West Side of Buffalo, New York. She was sponsored by the National Institutes of Health (NIH) to attend the Meeting of Nobel Laureates and Students in Lindau, Germany in 2010. She also received a prestigious NIH fellowship to perform research on the parent grant of her advisor, Dr. Philip Holmes. For the past two years, she researched the role of galanin in the stress-protection offered by exercise on behavior and brain norepinephrine. She expects to finish her doctorate in neuroscience in the summer of 2013. Natale's post-doctorate plans are to research the genetic and neurochemical underpinnings of mental disease.

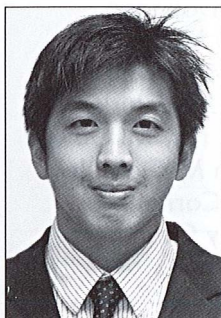
UNIVERSITY OF GEORGIA

Timothy Shaw

ARCS Century Award

Ph.D. Candidate, Bioinformatics

Second Year ARCS Scholar



Timothy received his B.S. in Computer Science from the Georgia Institute of Technology in 2008. He is currently pursuing a Ph.D. in Bioinformatics at the University of Georgia under the guidance of Dr. Ming Zhang. Timothy is greatly interested in investigating genetic patterns that facilitate efficient HIV transmission and disease progression. He has recently developed methods for modeling HIV RNA secondary structure and novel Shannon entropy approach to examine worldwide HIV diversity which is critical to HIV vaccine development. His developed methods will be used to address problems related to HIV co-infection and epitope discovery. Following graduation, Timothy plans to pursue a bioinformatics research career, applying multi-disciplinary technologies to address global infection diseases.

ARCS® FOUNDATION, INC. ATLANTA CHAPTER

BOARD OF DIRECTORS

2012-2013

President	Gracia Conn
Vice President for Administration	Jane Dolinger
Vice President for Communications	Leslie McLeod
Vice Presidents for Education/Events	Penny Seawell
	Sara Jean Burke
Vice President for Funds Development	Linda Kay McGowan
Vice President for Membership	Susan McGonigle
Vice President for University Relations	Lynn Cornett
Vice President of Finance	Nancy Chambers
Recording Secretary	Shearon Glover
Parliamentarian	Sherry Lundeen

COMMITTEE CHAIRS AND CO-CHAIRS

ARCS Scholars Chair	Brooke Weinmann
Assistant Treasurer	Louise Yeoman
Endowment Fund Chair	Liz Troy
Member Relations Chair	Robin King
Public Relations Chair	Elizabeth Spiegel
Public Relations Chair-Elect	Patty Reid
Special Events Chair	Yetty Arp
Special Events Chair-Elect	Barby Levy
2014 Retreat Co-Chairs	Janie Wilson
	Peg Cooley
Scholar Awards Luncheon Chair	Frances Swenson
Scholar Awards Luncheon Chair-Elect	Sylvia Dick
Speakers Chair	Debbie Liss
Internal Communications Chair	Carol Teem
Directory Chair	Connie Dotzenrod
Historian	Corrie Johnson
Newsletter Co-Editors	Carla Fackler
	Judy Schmidt
Newsletter Co-Publishers	Lisa Bankoff
	Deede Stephenson
Website Chair	Ronnie Martin
Administrative Assistant to the President	Pat Leake

SCHOLAR AWARDS LUNCHEON COMMITTEE 2012

Chairman
Chairman-Elect

Frances Swensson
Sylvia Dick

Funds Development

Linda Kay McGowan, *Chair*
Anne Boyd
Susan Boyd
Anne Easterly
Betty Feezor
Beth Finnerty
Libby Jones
Sherry Lundeen
Sally McDaniel
Debbie Shelton
Mary Snitch
Frances Swensson
Liz Troy
Kay Weiss

Flowers
Nametags
Program
Public Relations
Registration
Reservations
Scholar Relations
Seating
University Relations

Susan McGonigle
Sherry Lundeen
Eileen Christman
Elizabeth M. Spiegel
Kay Weiss
Sharon Quaintance
Brooke Weinmann
Haidee Courson
Lynn Cornett

Ambassadors

Liz Mori Lauer, *Chair*
Susan Bledsoe
Molly Eskew
Elsie Gould
Michelle Gandy
Laura Hardman
Corrie Johnson
Joanne Chesler Gross
Sherry Lundeen
Kristen Gibbs
Carol Meier
Mary Alice Isele
Regina Olchowski

ARCS FOUNDATION

ATLANTA CHAPTER MEMBERSHIP

Madeline R. Adams
 Mary L. Adams*
 Jane Woods Alexander
 Sharon Ansley
 Yetty Arp
 Kathy B. Ashe
 Lisa Herron Bankoff
 Mollie Winston Barrow
 Jan K. Bennett
 Jeanne L. Berry
 Kathleen Berry
 Rebecca Bradford Blalock **
 Paula Lawton Bevington
 Susan McCallum Bledsoe
 Sally C. Boice
 Anne M. Boyd
 Susan M. Boyd
 Regina S. Bridges
 Alice Brown
 Camille Buice
 Sarah Jean Burke
 Jennifer Cannon
 Nancy Chambers
 Eileen H. Christman
 Gracia M. Conn
 Margaret P. Cooley
 Lynn M. Cornett
 Ada Lee Correll
 Haidee Ballenger Courson
 Ann D. Cousins
 Ann Curry
 Elaine Casey Davis **
 Susie Deyo
 Sylvia L. Dick
 Constance V. Dimling
 Jane F. Dolinger
 Marcia G. Donnell
 Connie Dotzenrod
 Lee Doyle
 Patsy Drummond
 Anne Deeley Easterly
 Margaret O'Gara Eskew
 Carla D. Fackler
 Betty C. Feezor
 Beth Finnerty
 Marie Brumley Foster
 Cheryl G. Franklin*
 Michelle Gandy
 Kristen Gibbs
 Caroline M. Gilham
 Martha B. Gillin
 Sally B. Gladden

Lou Glenn
 Shearon Glover
 Joan S. Goodhew
 Elsie Gould
 Frances B. Graves
 Kathryn H. Graves
 Joanne Chesler Gross
 Louise Staton Gunn
 Caroline Hardin
 Laura Jones Hardman
 Katherine R. Harman
 Lillo W. Harris
 Aileen Hatcher
 Kitty Hawks
 Joan Heazel
 Susan J. Higley
 Ann P. Hill
 Sally Hinkle
 Jane L. Huffard
 Trudy Huger
 Mary Alice Isele
 Monica Wolk James **
 Helen M. Jancik
 Sally C. Jobe
 Cheryl Dabney Johnson **
 Trina L. Johns
 Corazon Johnson
 Cecile M. Jones
 Elizabeth R. Jones
 Randy Jones
 Anita K. Kern
 Robin King
 Ann E. Klamann
 Margaret Kresge
 Lynne C. Land
 Elizabeth Mori Lauer
 Patricia S. Leake
 Liz Levine
 Barbara Levy
 Deborah Liss
 Betts C. Love
 Sherry B. Lundeen
 Catherine C. Maier
 Elizabeth Martin
 Rhonda J. Martin
 Linda T. Mauldin
 Sally McDaniel
 Susan B. McGonigle
 Linda Kay McGowan
 Maggi McKay
 Leslie D. McLeod
 Carol Meier

Joanne T. Michaels
 Harriett Miller
 Catherine Millichap
 Susan J. Missbach
 Sue L. Mobley
 Betty N. Mori
 Brenda B. Moseley
 Mary Louise Napier
 Michelle Nordin
 Kay M. O'Connor
 Mary B. O'Connor*
 Regina Olchowski
 Valerie Peterson*
 Leslie Petteer
 Virginia P. Plummer
 Teed M. Poe
 Sharon S. Quaintance
 Kathy Ranier
 Nancy Sineath Rank
 Patty Reid
 Vicki Riedel
 Phyllis E. Rodbell
 Judy Schmidt
 Lynn Cochran Schroder
 Penny Paterson Seawell
 Deborah J. Shelton
 Mary Snitch
 Elizabeth M. Spiegel
 Patricia H. Stephenson
 Anne Sterchi
 Frances Swensson
 Mary Rose Taylor
 Carol Teem
 Babette J. Tipping
 Elizabeth Troy
 Pat Tuff
 Debbie K. Wagner*
 Brooke T. Weinmann
 Kay C. Weiss
 Kristin D. Whatley
 Clare G. Whitfield
 Susan W. Wieland
 Barbara S. Williams
 Jane J. Wilson
 Christan Eiler Wojcik
 Louise Yeoman
 Marguerite Yark

* *Honorary Members*

** *New Members*